



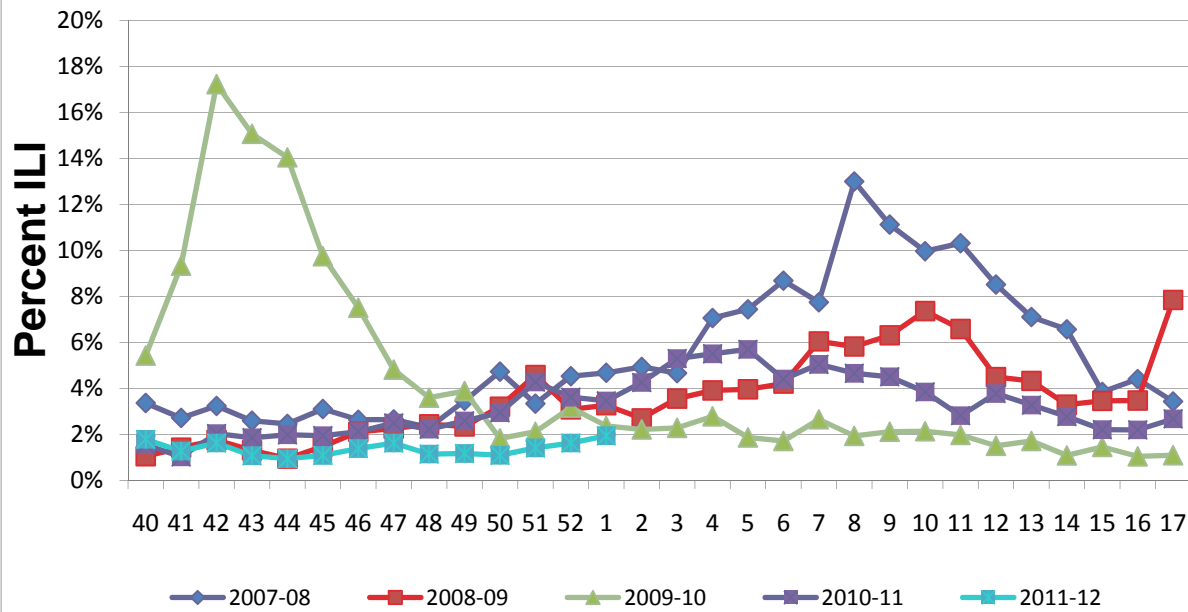
## **Influenza Surveillance Summary Week 1: January 1, 2012 – January 7, 2012\***

Influenza surveillance for Kane County Health Department includes the collection of data from hospital emergency rooms, laboratories and public schools. Our participants have reported the following aggregate measures:

- About 1.95% of participating hospital emergency room visits was for Influenza-Like-Illness (ILI).<sup>1</sup>
- Labs reported that 6 specimens tested<sup>2</sup> for influenza were positive. Of these 6 specimens, 2 tested positive for influenza A 3 were positive for influenza B and 1 was positive for influenza AB. No other specimens tested for influenza were positive for the week ending on January 7, 2012.
- ILI absenteeism rate for Kane County was at an average of 0.1%. No school in the county had ILI absenteeism rate above the 5% threshold. No school was closed.
- To date, no cases of Influenza related ICU admissions and no deaths have been reported to the health department. No Influenza-associated pediatric deaths were reported.
- To date, no outbreaks of Influenza have been reported from Long Term Care/Assisted Living facilities.

*The health department would like to thank the participating hospitals, laboratories, individual schools and school districts that provide the reports that make this monitoring possible.*

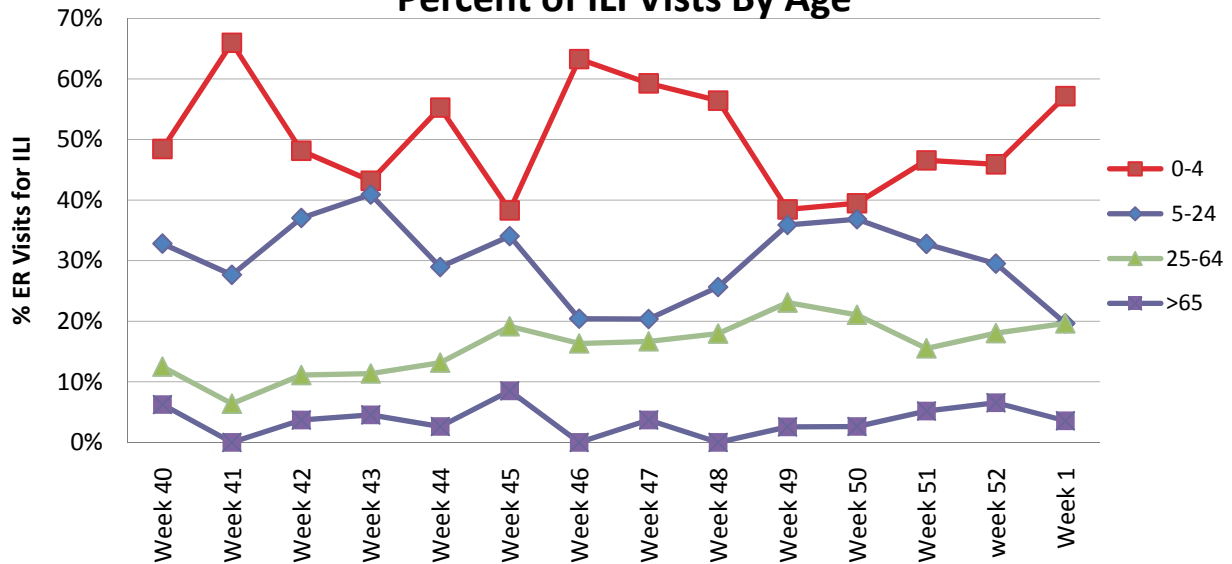
## Kane County Health Department Influenza-Like-Illness Surveillance Emergency Room Visits By Week



About 1.95% of participating hospital emergency room visits was for Influenza-Like-Illness (ILI).<sup>1</sup>

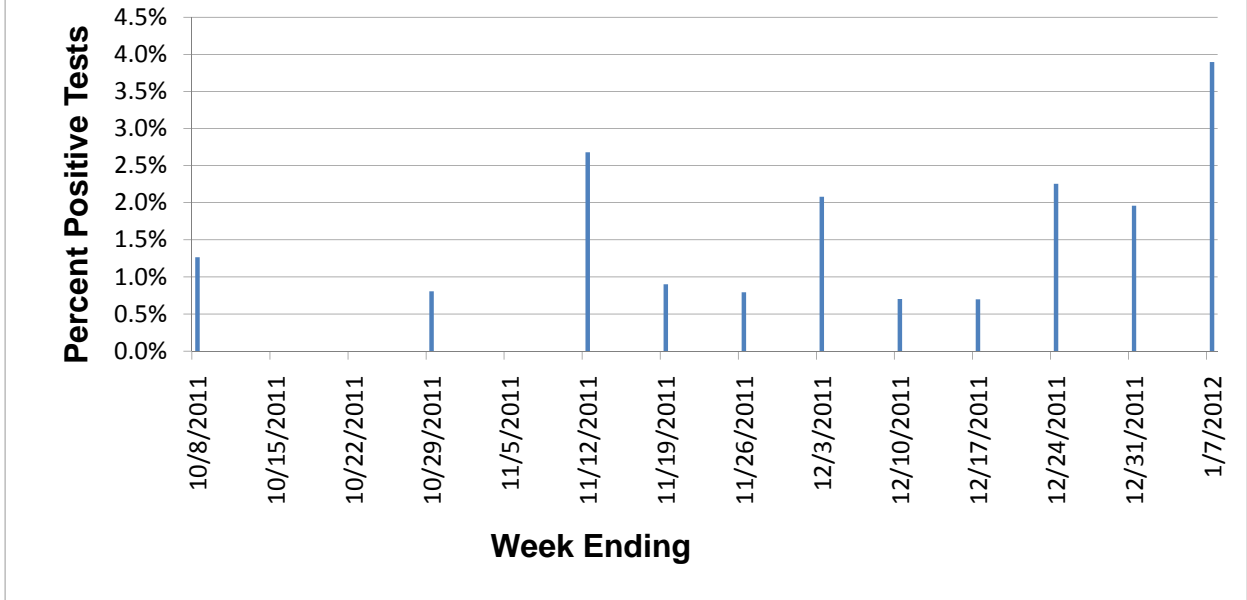
Each week, data for the 2011-2012 season will be presented with data from the previous four flu seasons to show the trend of ER visits for ILI over time.

**Kane County Health Department  
2011-2012 Influenza-Like-Illness Surveillance  
Participating Emergency Rooms (N=4)  
Percent of ILI Vists By Age**



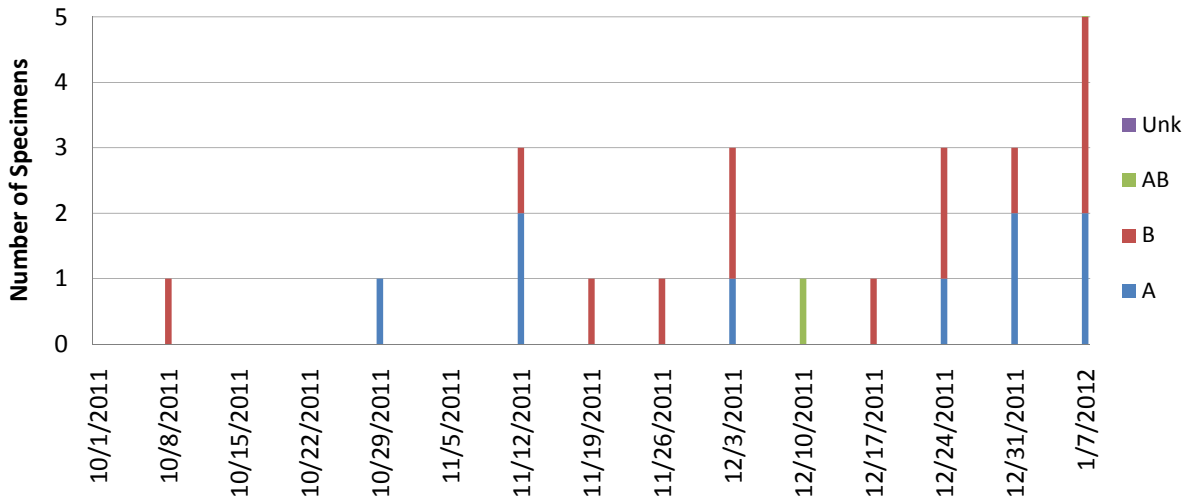
Of all visits for Influenza-like Illness to participating Emergency Rooms during Week 1 (January 1– January 7), 57% were in the 0-4 year old age group, 20% of visits for ILI were in the 5-24 year old age group. Throughout the season, KCHD will provide updated information on the total number of people visiting the emergency room for ILI and what age groups make up those visits. This week, about 1.63% of all visits to participating Emergency Rooms were for ILI.

**2011-2012 Kane County Health Department  
Influenza -Like-Illness Surveillance  
Participating Laboratories (N=6)  
Percent of Rapid Influenza Tests Positive for Influenza**



Labs reported that 6 specimens tested<sup>2</sup> for influenza were positive. Of these 6 specimens, 2 tested positive for influenza A 3 were positive for influenza B and 1 was positive for influenza AB. No other specimens tested for influenza were positive for the week ending on January 7, 2012.

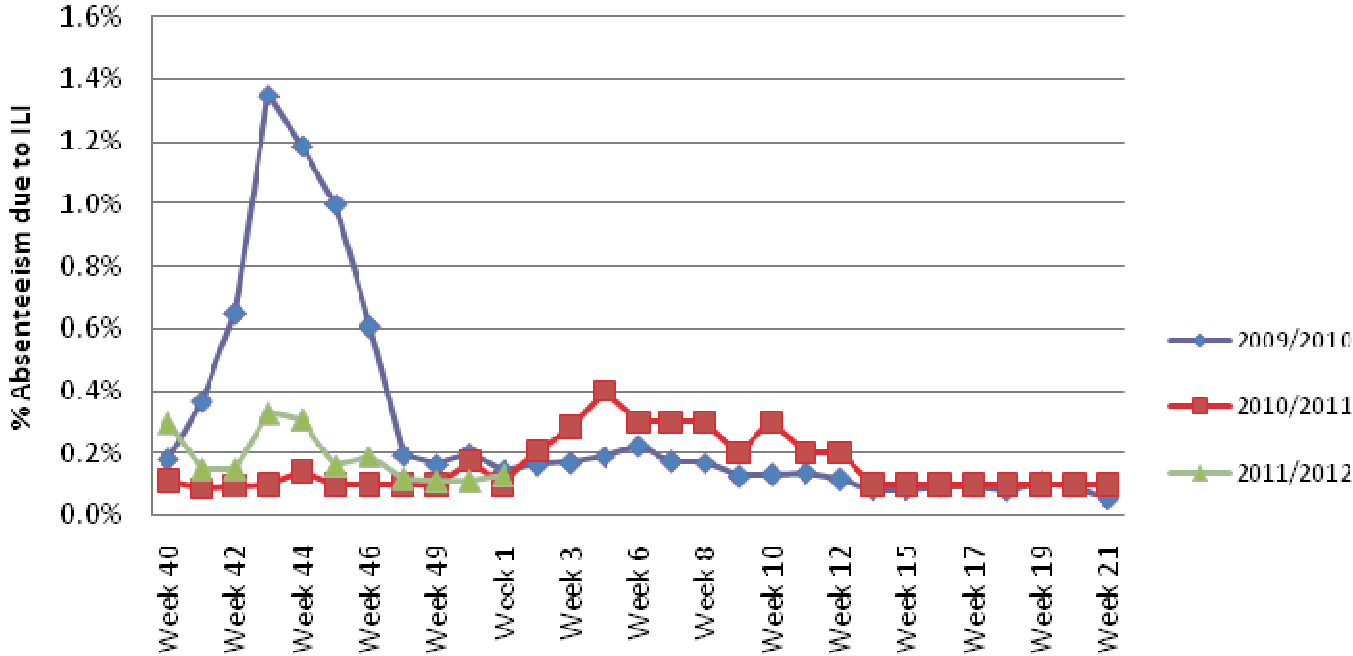
**2011-2012 Kane County Health Department  
Influenza -Like-Illness Surveillance  
Participating Laboratories (N=6)  
Rapid Influenza Testing  
Influenza Type**



Labs reported that 6 specimens tested<sup>2</sup> for influenza were positive. Of these 6 specimens, 2 tested positive for influenza A 3 were positive for influenza B and 1 was positive for influenza AB. No other specimens tested for influenza were positive for the week ending on January 7, 2012.

<b>Kane County Labs (6)</b>	<b>Week 1</b>
Number of specimens tested	154
Number of positive specimens (%)	6(3.9%)
<b>Positive specimens by type (%)</b>	
Influenza A	2(33.3%)
Influenza B	3(50%)
Influenza AB	1 (16.7%)
Influenza Unknown	0 (0%)

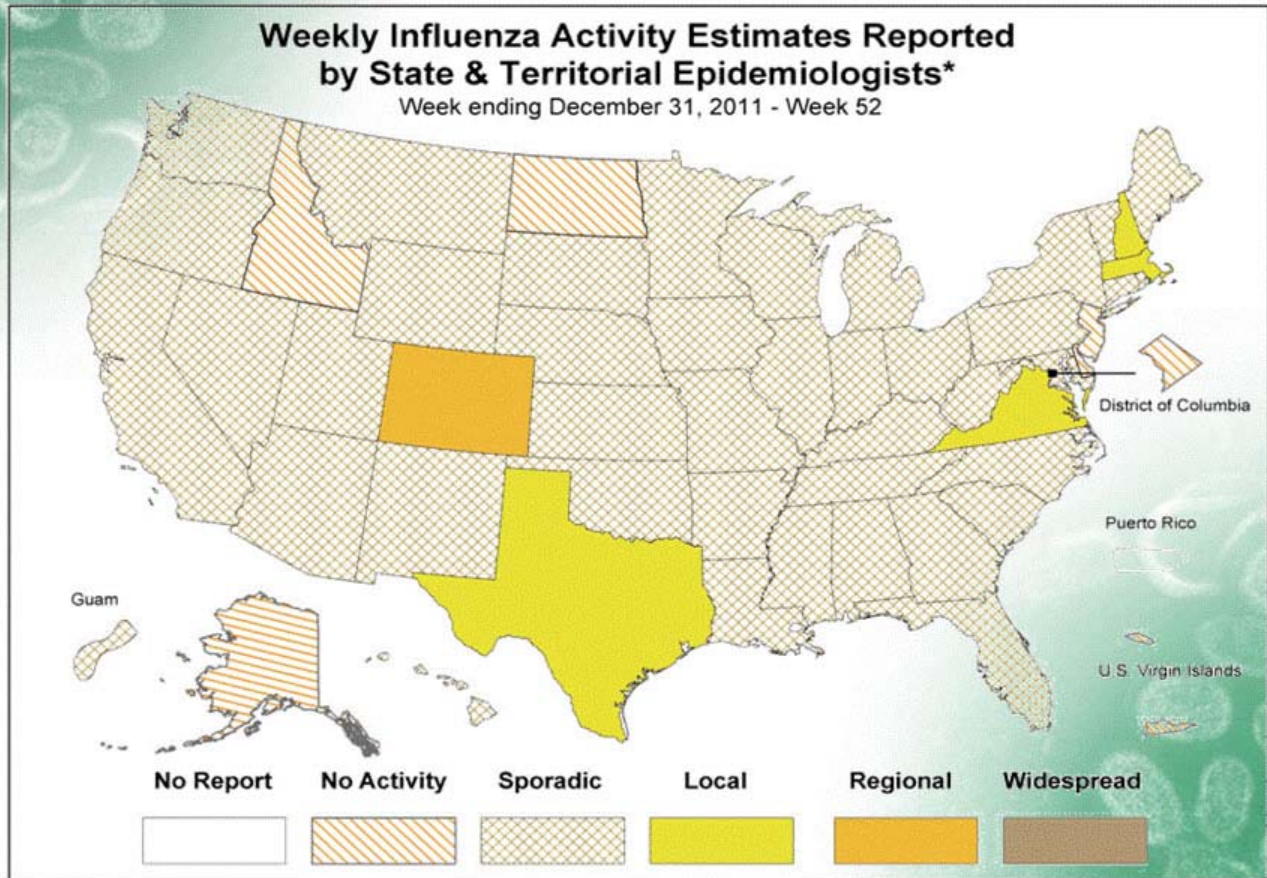
# Influenza-Like Illness Absenteeism Surveillance All Kane County School Districts



ILI absenteeism rate for Kane County was at an average of 0.1%. No school in the county had ILI absenteeism rate above the 5% threshold. No school was closed.

# FLUVIEW

A Weekly Influenza Surveillance Report Prepared by the Influenza Division



\* This map indicates geographic spread & does not measure the severity of influenza activity

- No activity:** No laboratory confirmed cases of influenza and no reported increase in cases of ILI.
- Sporadic:** Small number of laboratory confirmed influenza cases or a single laboratory confirmed influenza in a single region of the state.
- Local:** Outbreaks of influenza or increases in ILI and recent laboratory confirmed influenza in a single region of the state.
- Regional:** Outbreaks of influenza or increases in ILI and recent laboratory confirmed influenza in at least two but less than half the region of the state.
- Widespread:** Outbreaks of influenza or increases in ILI cases and recent laboratory confirmed influenza in at least half the region in the state.