



Influenza Surveillance Summary Week 40: October 2, 2011 – October 8, 2011*

This is the first influenza surveillance report for the 2011-2012 flu season. A weekly report will be available from the Kane County Health Department through April 2012.

Influenza surveillance for Kane County Health Department includes the collection of data from hospital emergency rooms, laboratories and public schools. Our participants have reported the following aggregate measures:

- About 1.79%, of participating hospital emergency room visits were for Influenza-Like-Illness (ILI).¹
- A total of 1, or 1.27%, of specimens tested² for influenza was positive and determined to be influenza B.
- ILI absenteeism rate for Kane County was at an average of 0.3%. No school in the county had ILI absenteeism rate above the 5% threshold. No school was closed.
- To date, no cases of Influenza related ICU admissions and no deaths were reported to the health department. No Influenza-associated pediatric deaths were reported.
- To date, no outbreaks of Influenza were reported from Long Term Care/Assisted Living facilities.

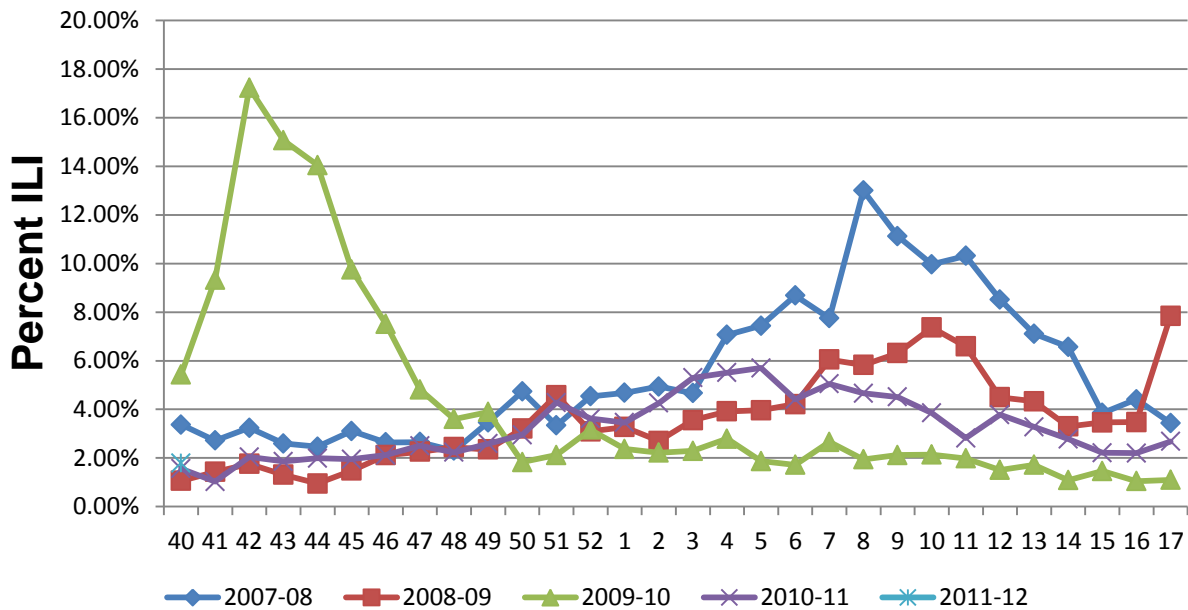
The health department would like to thank the participating hospitals, laboratories, individual schools and school districts that provide the reports that make this monitoring possible.

¹Influenza-like- illness (ILI) is defined as fever > 100° F with cough or sore throat without other known cause

²Rapid influenza testing cannot distinguish influenza infections caused by novel influenza A viruses. The sensitivity of this type of testing has been shown to range between [20-100%] for seasonal influenza viruses. A negative result does not exclude influenza virus infection.

* Data are Provisional

Kane County Health Department Influenza-Like-Illness Surveillance Emergency Room Visits



About 1.79%, of participating hospital emergency room visits was for Influenza-Like-Illness (ILI).¹ This is below the 2007-2008 and 2009-2010 seasons but higher than 2 other previous seasons.

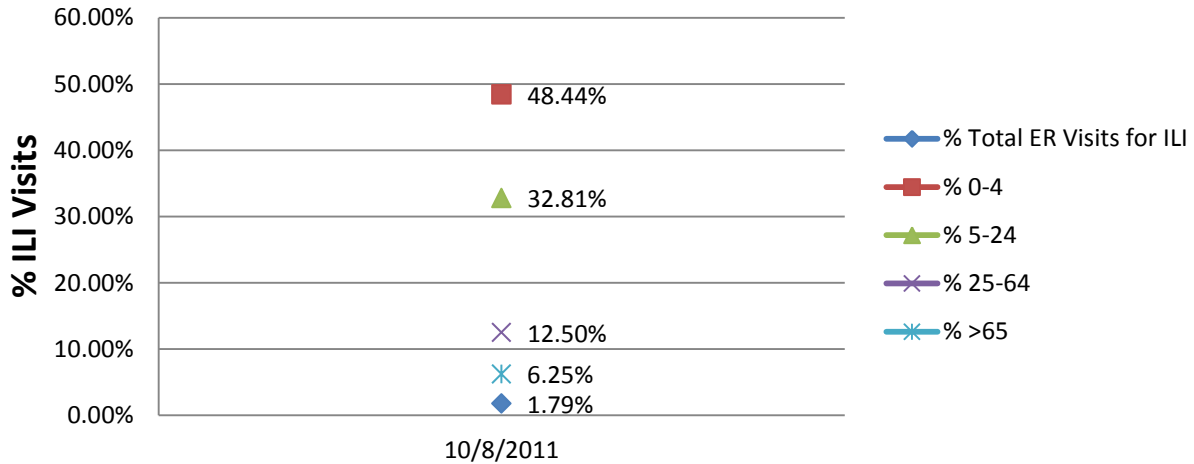
Each week, data for the 2011-2012 season will be presented with data from the previous four flu seasons to show the trend of ER visits for ILI over time.

¹Influenza-like- illness (ILI) is defined as fever > 100° F with cough or sore throat without other known cause

²Rapid influenza testing cannot distinguish influenza infections caused by novel influenza A viruses. The sensitivity of this type of testing has been shown to range between [20-100%] for seasonal influenza viruses. A negative result does not exclude influenza virus infection.

* Data are Provisional

**Kane County Health Department
2011-2012 Influenza-Like-Illness Surveillance
Participating Emergency Rooms (N=4)
Percent of ILI Vists By Age-Group**



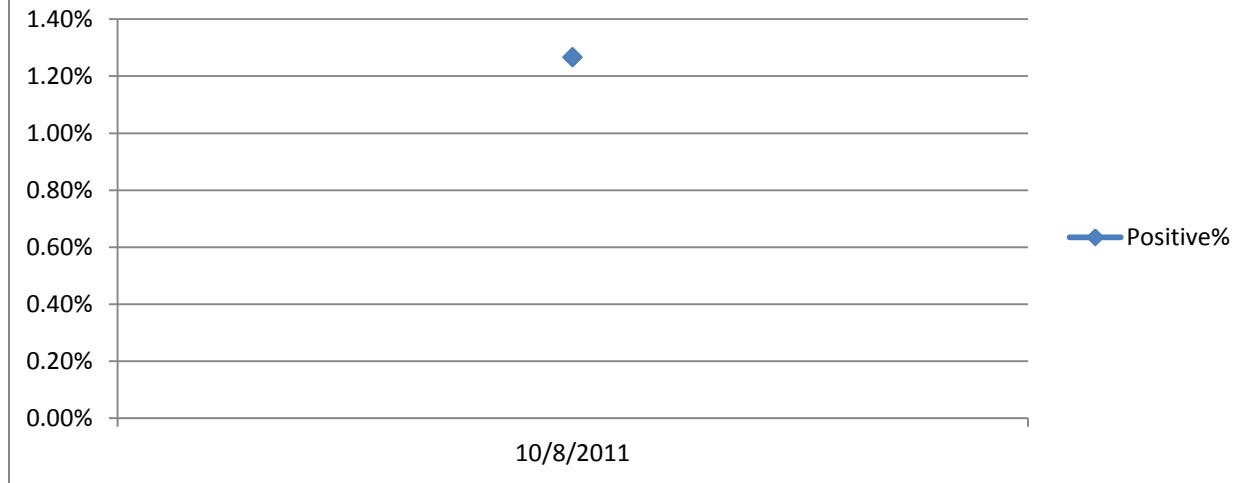
Of all visits for Influenza-like Illness to the participating Emergency Rooms, 48.44% were in the 0-4 year old age group. 32.81% of visits for ILI were in the 5-24 year old age group. Throughout the season, KCHD will provide updated information on the total number of people visiting the emergency room for ILI and what age groups make up those visits. This week, about 1.79% of all visits to participating Emergency Rooms was for ILI.

¹Influenza-like- illness (ILI) is defined as fever > 100° F with cough or sore throat without other known cause

²Rapid influenza testing cannot distinguish influenza infections caused by novel influenza A viruses. The sensitivity of this type of testing has been shown to range between [20-100%] for seasonal influenza viruses. A negative result does not exclude influenza virus infection.

* Data are Provisional

**2011-2012 Kane County Health Department
Influenza -Like-Illness Surveillance
Participating Laboratories (N=4)
% of Rapid Influenza Tests that were positive for
Influenza**



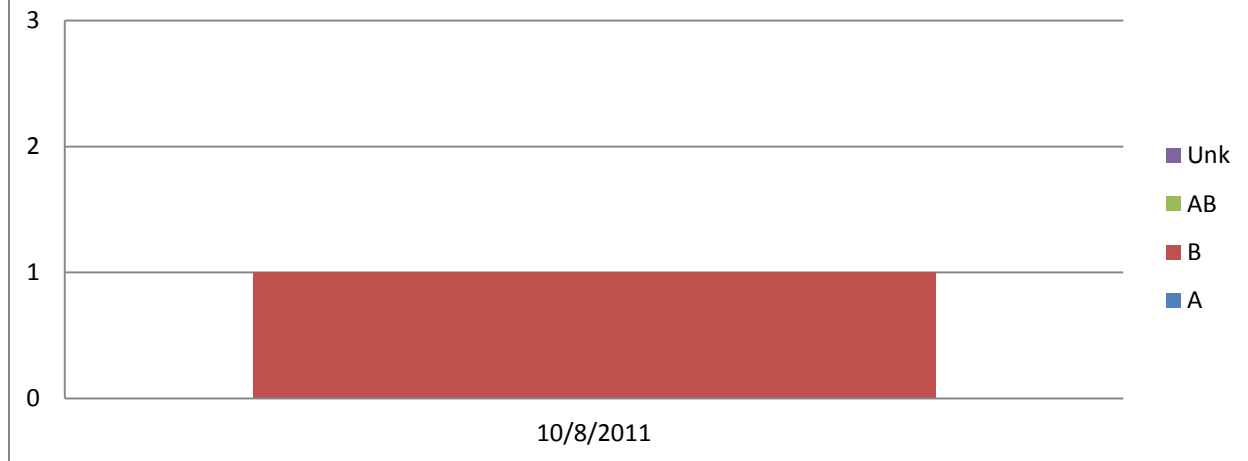
A total of 1, or 1.27%, of specimens tested² for influenza was positive and determined to be influenza B.

¹Influenza-like- illness (ILI) is defined as fever > 100° F with cough or sore throat without other known cause

²Rapid influenza testing cannot distinguish influenza infections caused by novel influenza A viruses. The sensitivity of this type of testing has been shown to range between [20-100%] for seasonal influenza viruses. A negative result does not exclude influenza virus infection.

* Data are Provisional

**2010-2011 Kane County Health Department
Influenza -Like-Illness Surveillance
Participating Laboratories (N=4)
Rapid Influenza Testing
Influenza Type**



A total of 1, or 1.27%, of specimens tested² for influenza was positive and determined to be influenza B.

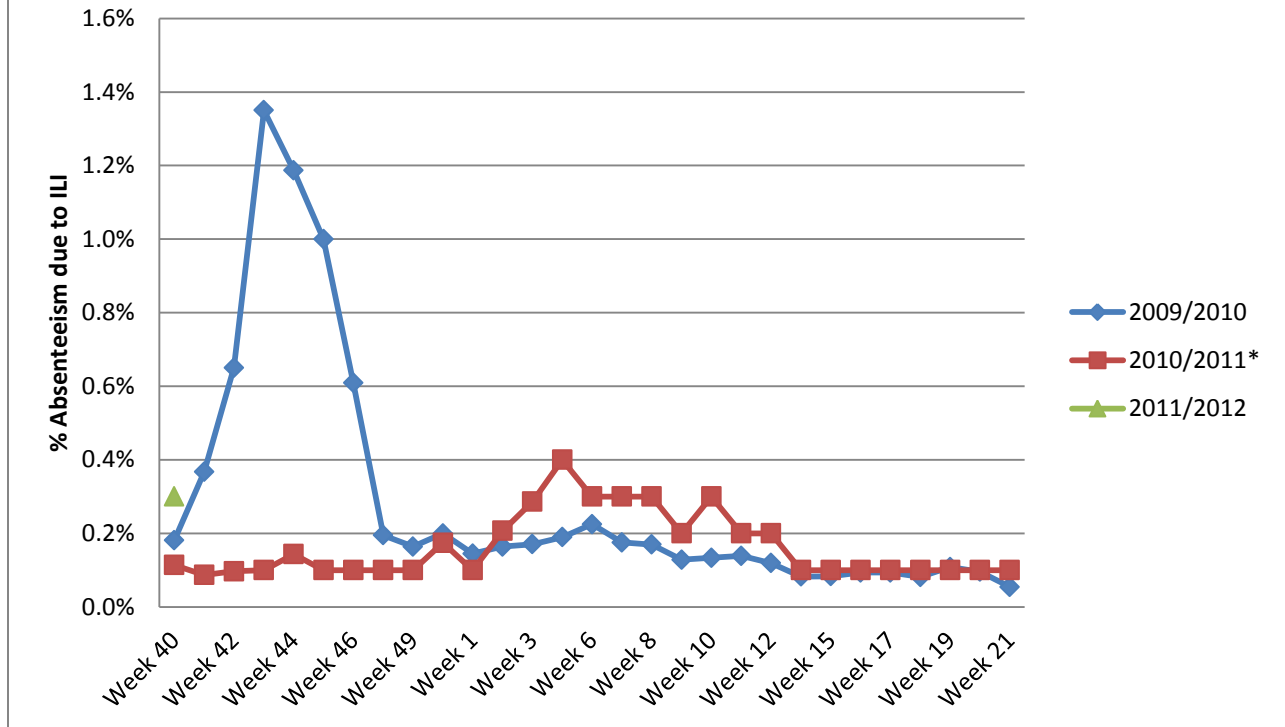
Kane County Labs (4)	Week 40
Number of specimens tested	79
Number of positive specimens (%)	1(1.27%)
Positive specimens by type (%)	
Influenza A	0(0%)
Influenza B	1(100%)
Influenza AB	0(0%)
Influenza Unknown	0(0%)

¹Influenza-like- illness (ILI) is defined as fever > 100° F with cough or sore throat without other known cause

²Rapid influenza testing cannot distinguish influenza infections caused by novel influenza A viruses. The sensitivity of this type of testing has been shown to range between [20-100%] for seasonal influenza viruses. A negative result does not exclude influenza virus infection.

* Data are Provisional

Influenza-Like Illness Absenteeism Surveillance All Kane County School Districts



*2009 -2010 data are based on daily reports and are therefore different from reports from later years.

0.3 % of all student absenteeism reported in participating Kane County public schools was due to Influenza-like Illness.

¹Influenza-like- illness (ILI) is defined as fever > 100° F with cough or sore throat without other known cause

²Rapid influenza testing cannot distinguish influenza infections caused by novel influenza A viruses. The sensitivity of this type of testing has been shown to range between [20-100%] for seasonal influenza viruses. A negative result does not exclude influenza virus infection.

* Data are Provisional