



Influenza Surveillance Summary **Week 51: December 18, 2011 – December 24, 2011***

Influenza surveillance for Kane County Health Department includes the collection of data from hospital emergency rooms, laboratories and public schools. Our participants have reported the following aggregate measures:

- About 1.42% of participating hospital emergency room visits was for Influenza-Like-Illness (ILI).¹
- Labs reported that 3 specimens tested² for influenza were positive. Of these 3 specimens, 1 tested positive for influenza A and 2 were positive for influenza B. No other specimens tested for influenza were positive for the week ending on December 24, 2011.
- There are no reports from schools this week because schools were closed for winter break.
- To date, no cases of Influenza related ICU admissions and no deaths have been reported to the health department. No Influenza-associated pediatric deaths were reported.
- To date, no outbreaks of Influenza have been reported from Long Term Care/Assisted Living facilities.

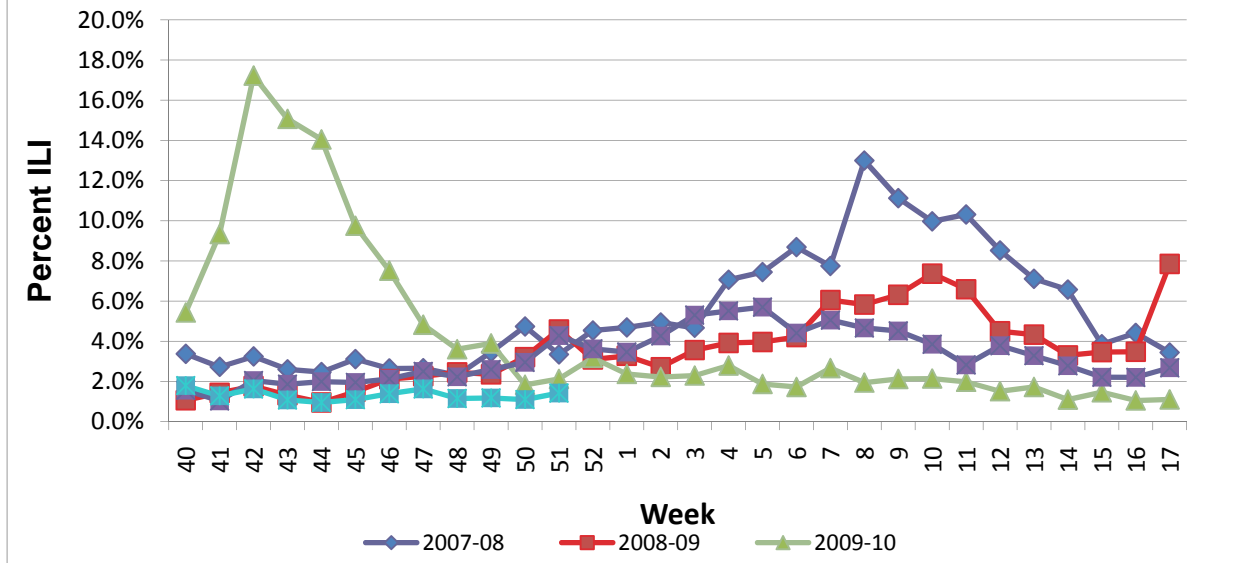
The health department would like to thank the participating hospitals, laboratories, individual schools and school districts that provide the reports that make this monitoring possible.

¹Influenza-like- illness (ILI) is defined as fever > 100° F with cough or sore throat without other known cause

²Rapid influenza testing cannot distinguish influenza infections caused by novel influenza A viruses. The sensitivity of this type of testing has been shown to range between [20-100%] for seasonal influenza viruses. A negative result does not exclude influenza virus infection.

* Data are Provisional

Kane County Health Department Influenza-Like-Illness Surveillance Emergency Room Visits



About 1.42% of participating hospital emergency room visits was for Influenza-Like-Illness (ILI).¹

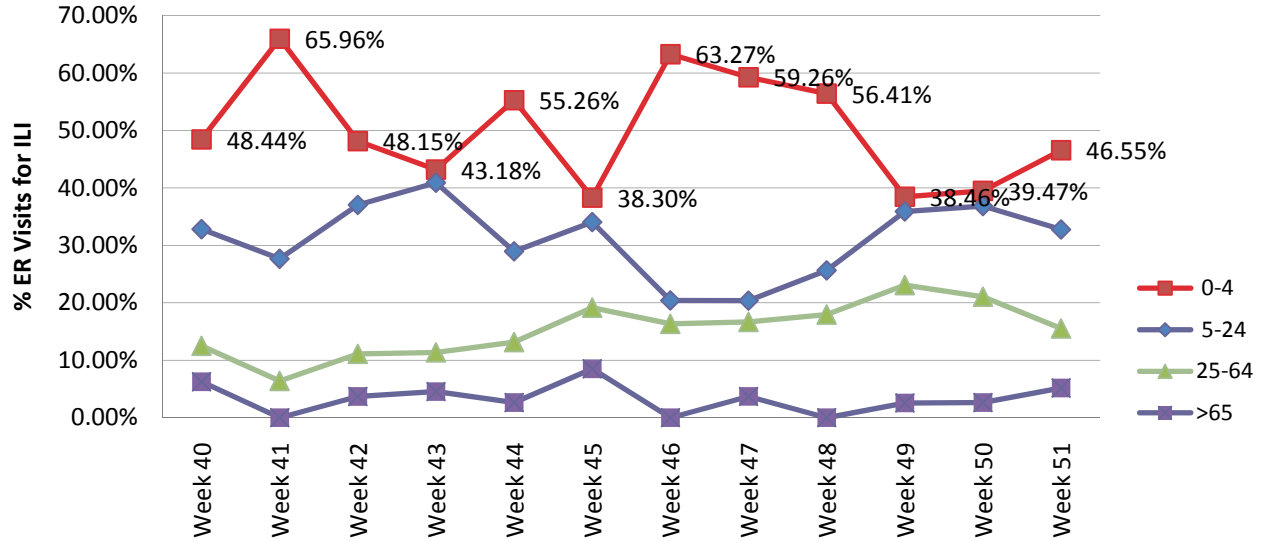
Each week, data for the 2011-2012 season will be presented with data from the previous four flu seasons to show the trend of ER visits for ILI over time.

¹Influenza-like- illness (ILI) is defined as fever > 100° F with cough or sore throat without other known cause

²Rapid influenza testing cannot distinguish influenza infections caused by novel influenza A viruses. The sensitivity of this type of testing has been shown to range between [20-100%] for seasonal influenza viruses. A negative result does not exclude influenza virus infection.

* Data are Provisional

**Kane County Health Department
2011-2012 Influenza-Like-Illness Surveillance
Participating Emergency Rooms (N=4)
Percent of ILI Vists By Age**



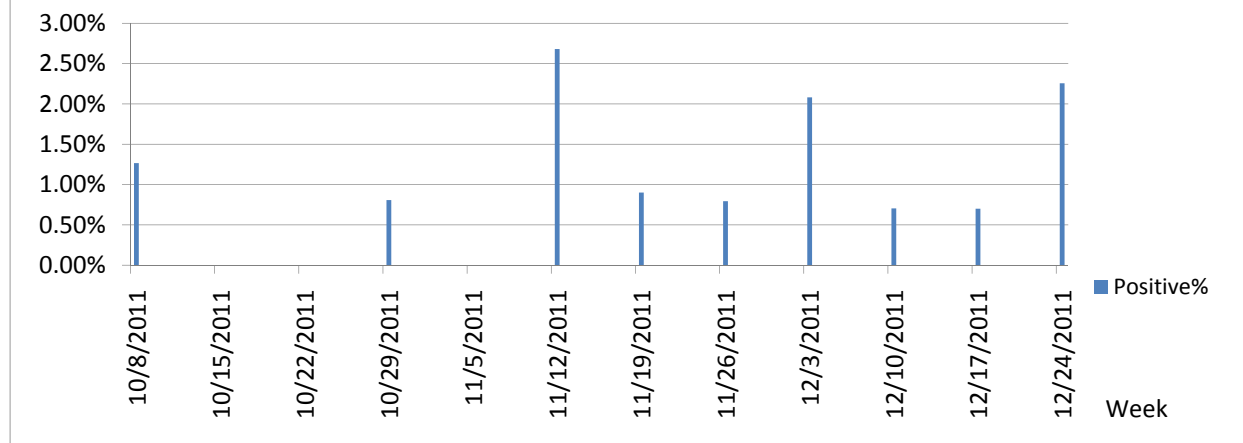
Of all visits for Influenza-like Illness to participating Emergency Rooms during Week 51 (December 18– December 24), 46.55% were in the 0-4 year old age group, 32.76% of visits for ILI were in the 5-24 year old age group. Throughout the season, KCHD will provide updated information on the total number of people visiting the emergency room for ILI and what age groups make up those visits. This week, about 1.42% of all visits to participating Emergency Rooms were for ILI.

¹Influenza-like- illness (ILI) is defined as fever > 100° F with cough or sore throat without other known cause

²Rapid influenza testing cannot distinguish influenza infections caused by novel influenza A viruses. The sensitivity of this type of testing has been shown to range between [20-100%] for seasonal influenza viruses. A negative result does not exclude influenza virus infection.

* Data are Provisional

2011-2012 Kane County Health Department Influenza -Like-Illness Surveillance Participating Laboratories (N=6) % of Rapid Influenza Tests that were positive for Influenza



Labs reported that 3 specimens tested² for influenza were positive. Of these 3 specimens, 1 tested positive for influenza A and 2 were positive for influenza B. No other specimens tested for influenza were positive for the week ending on December 24, 2011.

¹Influenza-like- illness (ILI) is defined as fever > 100° F with cough or sore throat without other known cause

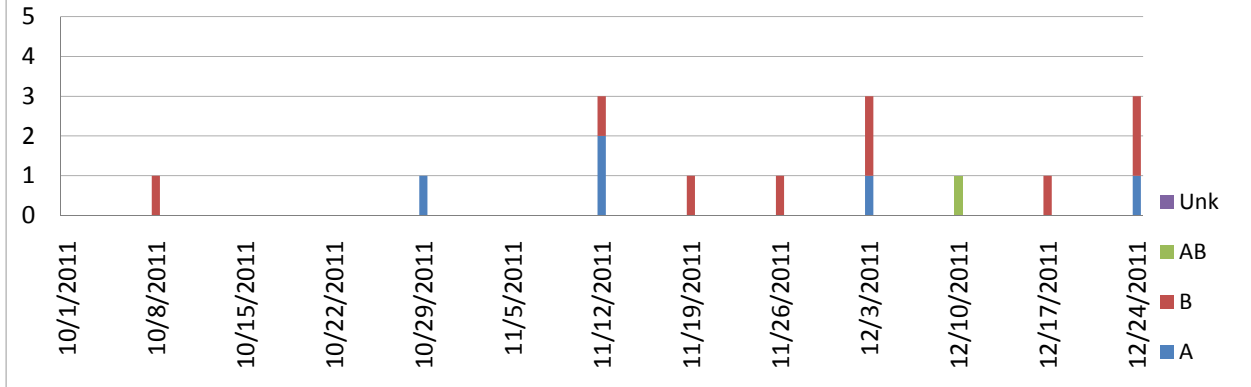
²Rapid influenza testing cannot distinguish influenza infections caused by novel influenza A viruses. The sensitivity of this type of testing has been shown to range between [20-100%] for seasonal influenza viruses. A negative result does not exclude influenza virus infection.

* Data are Provisional

2011-2012 Kane County Health Department Influenza -Like-Illness Surveillance

Participating Laboratories (N=6)

Rapid Influenza Testing Influenza Type



Labs reported that 3 specimens tested² for influenza were positive. Of these 3 specimens, 1 tested positive for influenza A and 2 were positive for influenza B. No other specimens tested for influenza were positive for the week ending on December 24, 2011.

Kane County Labs (6)	Week 51
Number of specimens tested	133
Number of positive specimens (%)	3(2.26%)
Positive specimens by type (%)	
Influenza A	1(0.75%)
Influenza B	1 (1.5%)
Influenza AB	0 (0%)
Influenza Unknown	0 (0%)

¹Influenza-like- illness (ILI) is defined as fever > 100° F with cough or sore throat without other known cause

²Rapid influenza testing cannot distinguish influenza infections caused by novel influenza A viruses. The sensitivity of this type of testing has been shown to range between [20-100%] for seasonal influenza viruses. A negative result does not exclude influenza virus infection.

* Data are Provisional

There are no reports from schools this week because schools were closed for winter break

¹Influenza-like- illness (ILI) is defined as fever > 100° F with cough or sore throat without other known cause

²Rapid influenza testing cannot distinguish influenza infections caused by novel influenza A viruses. The sensitivity of this type of testing has been shown to range between [20-100%] for seasonal influenza viruses. A negative result does not exclude influenza virus infection.

* Data are Provisional

