



Influenza Surveillance Summary Week 48: November 27, 2011 – December 3, 2011*

Influenza surveillance for Kane County Health Department includes the collection of data from hospital emergency rooms, laboratories and public schools. Our participants have reported the following aggregate measures:

- About 1.15% of participating hospital emergency room visits were for Influenza-Like-Illness (ILI).¹
- Labs reported that 3 specimens tested² for influenza were positive. Of these 3 specimens, 1 tested positive for influenza A and 2 were positive for influenza B. No other specimens tested for influenza were positive for the week ending on December 3, 2011.
- ILI absenteeism rate for Kane County was at an average of 0.12%. No school in the county had ILI absenteeism rate above the 5% threshold. No school was closed.
- To date, no cases of Influenza related ICU admissions and no deaths have been reported to the health department. No Influenza-associated pediatric deaths were reported.
- To date, no outbreaks of Influenza have been reported from Long Term Care/Assisted Living facilities.

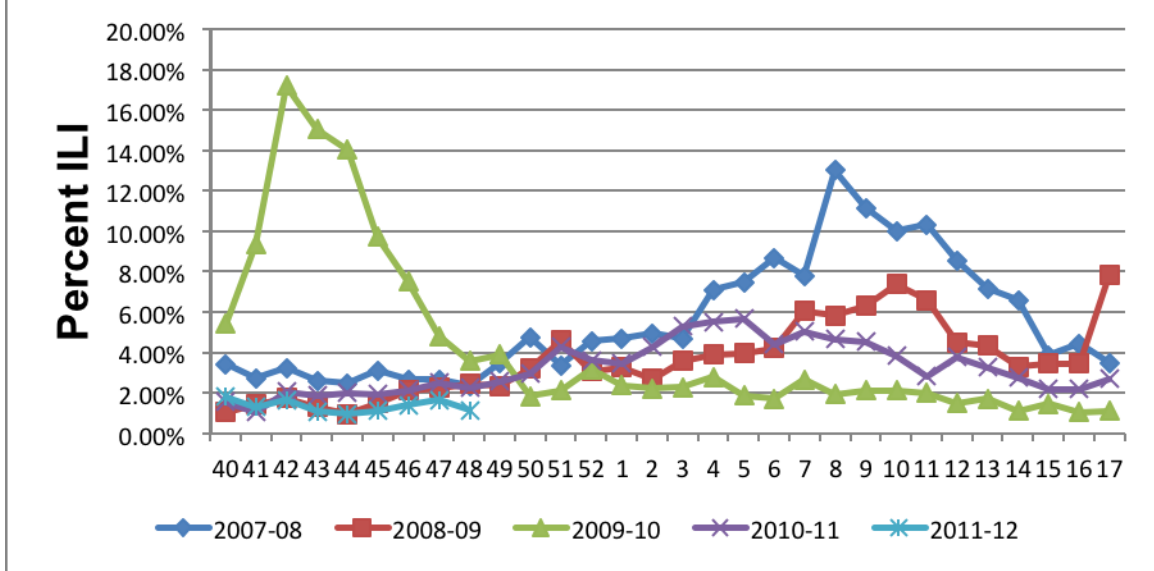
The health department would like to thank the participating hospitals, laboratories, individual schools and school districts that provide the reports that make this monitoring possible.

¹Influenza-like- illness (ILI) is defined as fever > 100° F with cough or sore throat without other known cause

²Rapid influenza testing cannot distinguish influenza infections caused by novel influenza A viruses. The sensitivity of this type of testing has been shown to range between [20-100%] for seasonal influenza viruses. A negative result does not exclude influenza virus infection.

* Data are Provisional

Kane County Health Department Influenza-Like-Illness Surveillance Emergency Room Visits



About 1.15%, of participating hospital emergency room visits were for Influenza-Like-Illness (ILI).¹ This is below all seasons from 2007-2011.

Each week, data for the 2011-2012 season will be presented with data from the previous four flu seasons to show the trend of ER visits for ILI over time.

¹Influenza-like- illness (ILI) is defined as fever > 100° F with cough or sore throat without other known cause

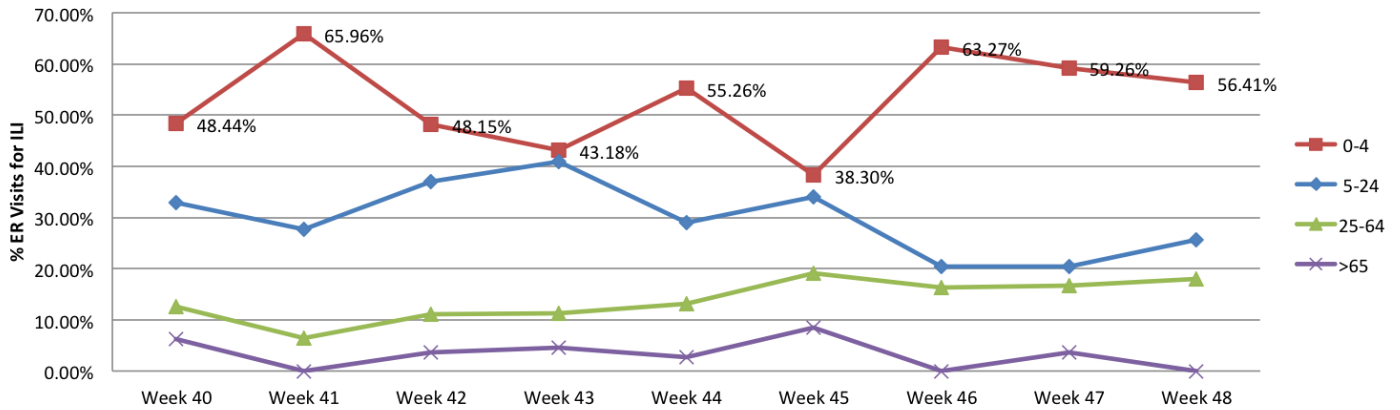
²Rapid influenza testing cannot distinguish influenza infections caused by novel influenza A viruses. The sensitivity of this type of testing has been shown to range between [20-100%] for seasonal influenza viruses. A negative result does not exclude influenza virus infection.

* Data are Provisional

Kane County Health Department

2011-2012 Influenza-Like-Illness Surveillance

Participating Emergency Rooms (N=4) Percent of ILI Vists By Age



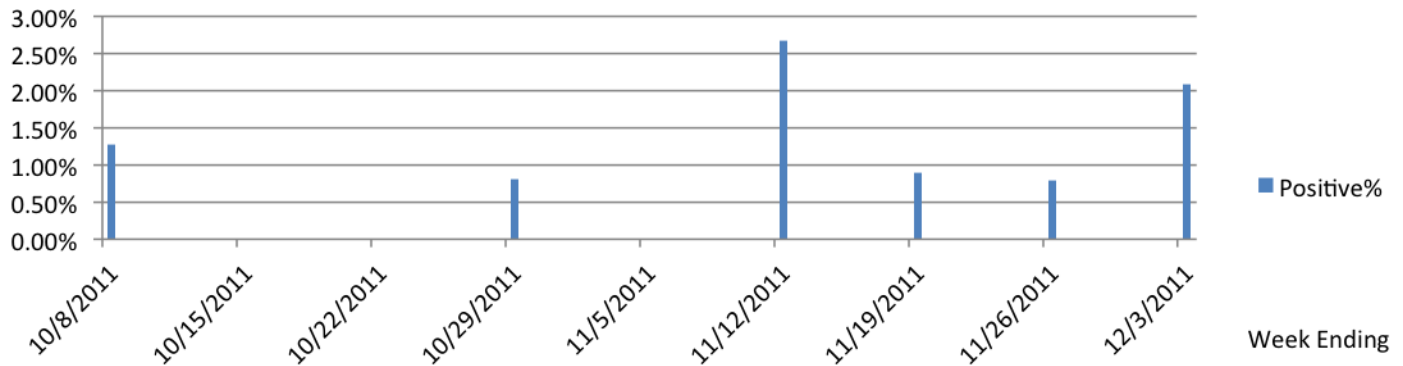
Of all visits for Influenza-like Illness to the participating Emergency Rooms during Week 48 (November 27– December 3), 56.41% were in the 0-4 year old age group. 25.64% of visits for ILI were in the 5-24 year old age group. Throughout the season, KCHD will provide updated information on the total number of people visiting the emergency room for ILI and what age groups make up those visits. This week, about 1.15% of all visits to participating Emergency Rooms were for ILI.

¹Influenza-like- illness (ILI) is defined as fever > 100° F with cough or sore throat without other known cause

²Rapid influenza testing cannot distinguish influenza infections caused by novel influenza A viruses. The sensitivity of this type of testing has been shown to range between [20-100%] for seasonal influenza viruses. A negative result does not exclude influenza virus infection.

* Data are Provisional

**2011-2012 Kane County Health Department
Influenza -Like-Illness Surveillance
Participating Laboratories (N=6)
% of Rapid Influenza Tests that were positive for
Influenza**



Labs reported that 3 specimens tested² for influenza were positive. Of these 3 specimens, 1 tested positive for influenza A and 2 were positive for influenza B. No other specimens tested for influenza were positive for the week ending on December 3, 2011.

¹Influenza-like- illness (ILI) is defined as fever > 100° F with cough or sore throat without other known cause

²Rapid influenza testing cannot distinguish influenza infections caused by novel influenza A viruses. The sensitivity of this type of testing has been shown to range between [20-100%] for seasonal influenza viruses. A negative result does not exclude influenza virus infection.

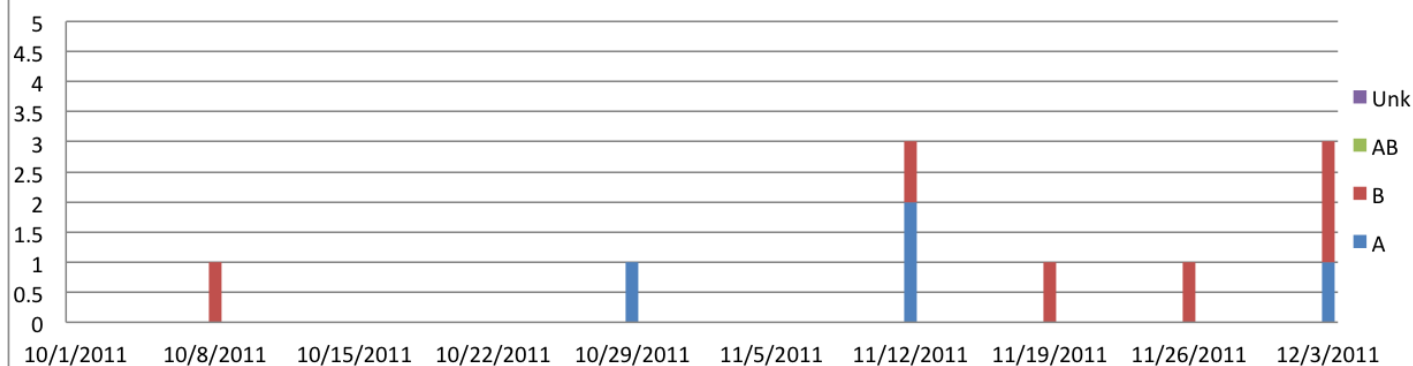
* Data are Provisional

2011-2012 Kane County Health Department Influenza -Like-Illness Surveillance

Participating Laboratories (N=6)

Rapid Influenza Testing

Influenza Type



Labs reported that 3 specimens tested² for influenza were positive. Of these 3 specimens, 1 tested positive for influenza A and 2 were positive for influenza B. No other specimens tested for influenza were positive for the week ending on December 3, 2011.

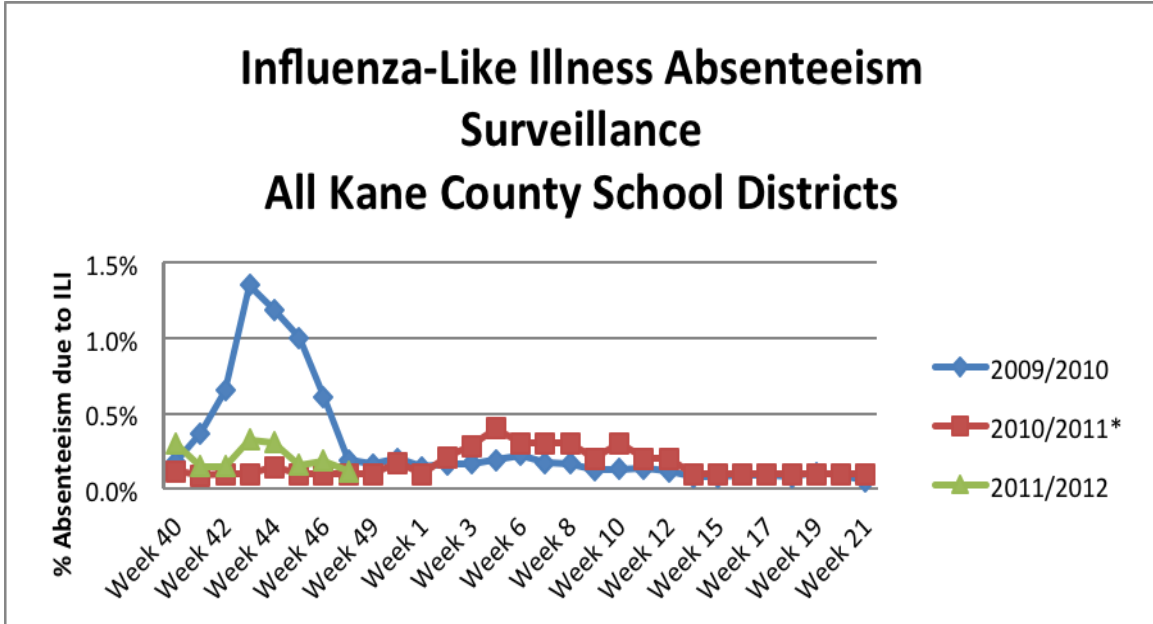
Kane County Labs (6)	Week 48
Number of specimens tested	144
Number of positive specimens (%)	3(2.08%)
Positive specimens by type (%)	
Influenza A	1(33.34%)
Influenza B	2 (66.66%)
Influenza AB	0 (0%)
Influenza Unknown	0 (0%)

¹Influenza-like- illness (ILI) is defined as fever > 100° F with cough or sore throat without other known cause

²Rapid influenza testing cannot distinguish influenza infections caused by novel influenza A viruses. The sensitivity of this type of testing has been shown to range between [20-100%] for seasonal influenza viruses. A negative result does not exclude influenza virus infection.

* Data are Provisional

Influenza-Like Illness Absenteeism Surveillance All Kane County School Districts



An average of 0.12% of all student absenteeism reported in participating Kane County public schools was due to Influenza-like Illness.

¹Influenza-like- illness (ILI) is defined as fever > 100° F with cough or sore throat without other known cause

²Rapid influenza testing cannot distinguish influenza infections caused by novel influenza A viruses. The sensitivity of this type of testing has been shown to range between [20-100%] for seasonal influenza viruses. A negative result does not exclude influenza virus infection.

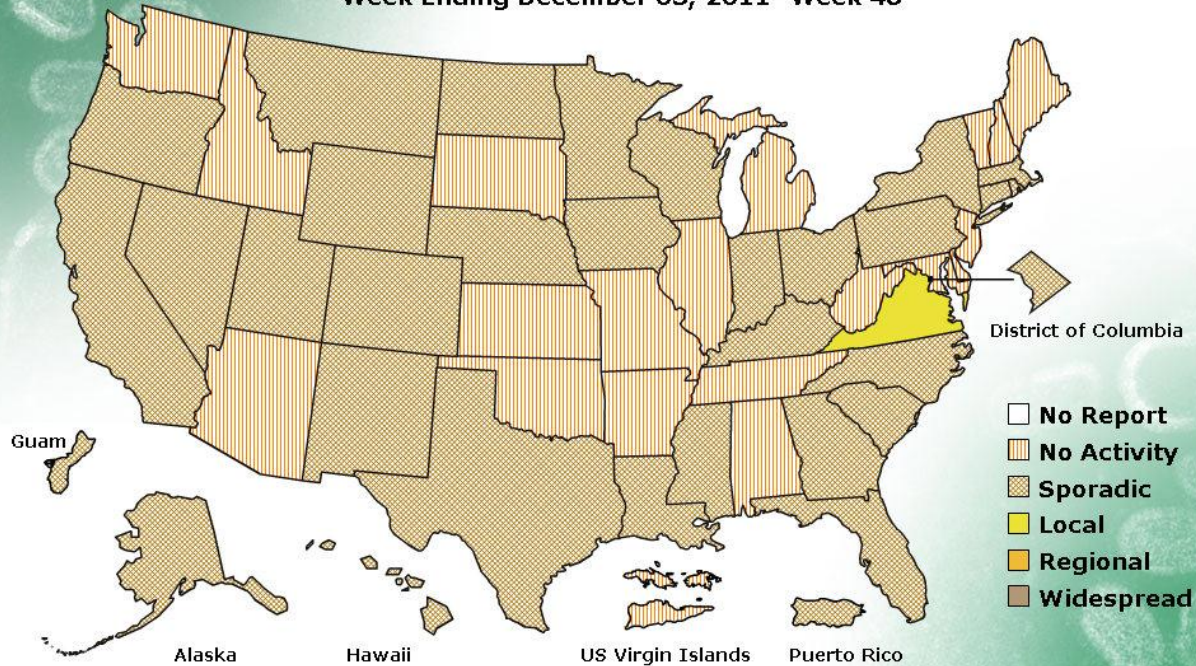
* Data are Provisional

FLUVIEW



A Weekly Influenza Surveillance Report Prepared by the Influenza Division
Weekly Influenza Activity Estimates Reported by State and Territorial Epidemiologists*

Week Ending December 03, 2011- Week 48



*This map indicates geographic spread and does not measure the severity of influenza activity.

¹Influenza-like- illness (ILI) is defined as fever > 100° F with cough or sore throat without other known cause

²Rapid influenza testing cannot distinguish influenza infections caused by novel influenza A viruses. The sensitivity of this type of testing has been shown to range between [20-100%] for seasonal influenza viruses. A negative result does not exclude influenza virus infection.

* Data are Provisional