



2011 Community Health Assessment Results: *Improvement Plan Overview*

Community Health Assessment

- ☑ Quick process review
- ☑ Results: where to find the details
- ☑ Health Priorities & Action Plan
- ☑ What's next?

2011 Community Health Assessment & Improvement Planning



Why?

- Efficient resource use: 9 Kane County agency partnership
- KCHD reorganization>>>capacity
- Alignment around health needs & priorities

What?

- Comprehensive two-part report
 - Assessment
 - Improvement Plan
- 9 customized reports
- Health integrated in Comprehensive Plan
- Web-based data and source reports



Fox Valley United Way

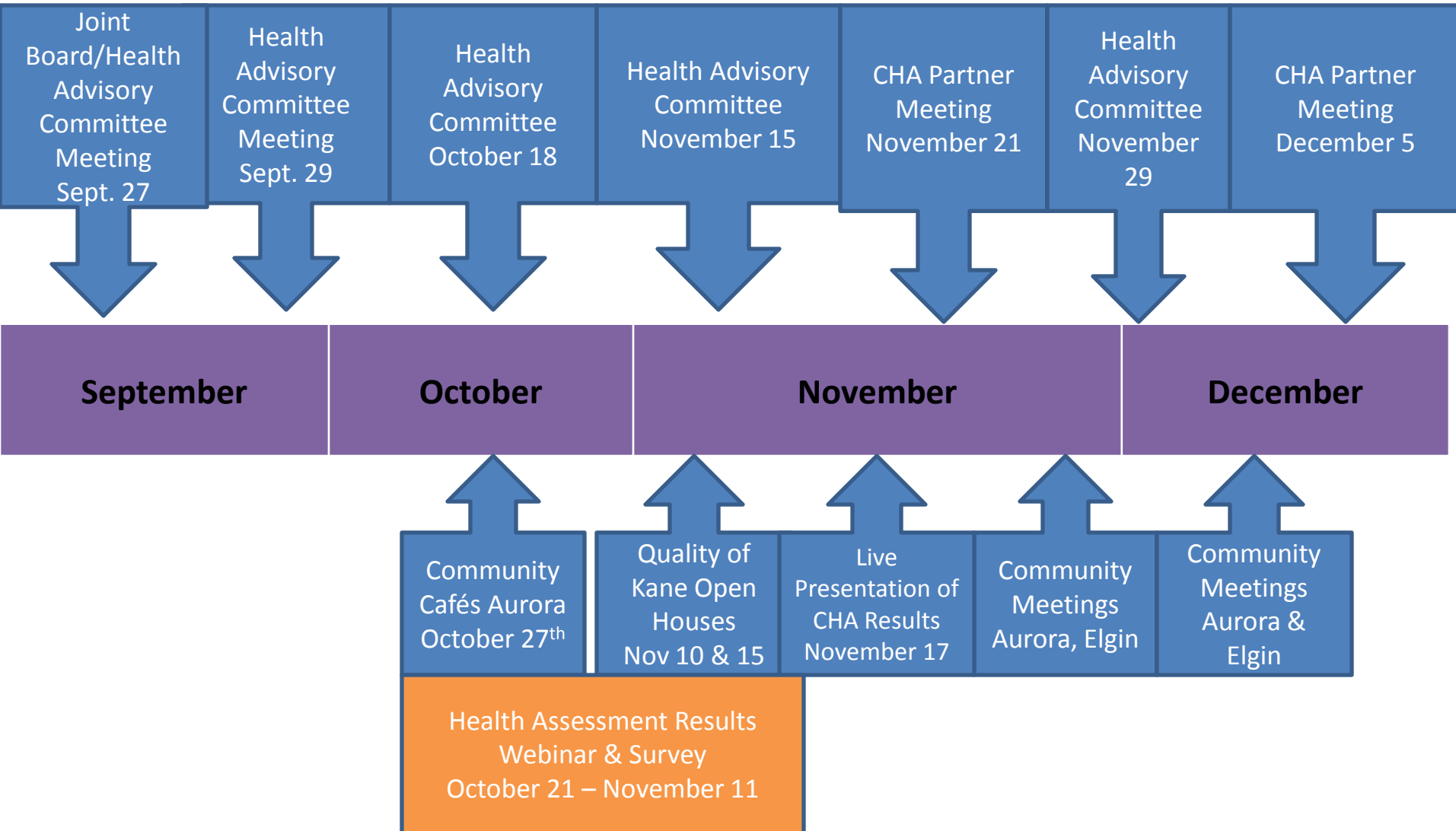


United Way of Elgin



Mental Health and Mental Retardation Services, Inc.

Community Health Assessment Activities



Why assessment and planning?

- Identify community health needs and problems
- Identify community assets and resources
- Prioritize limited resources



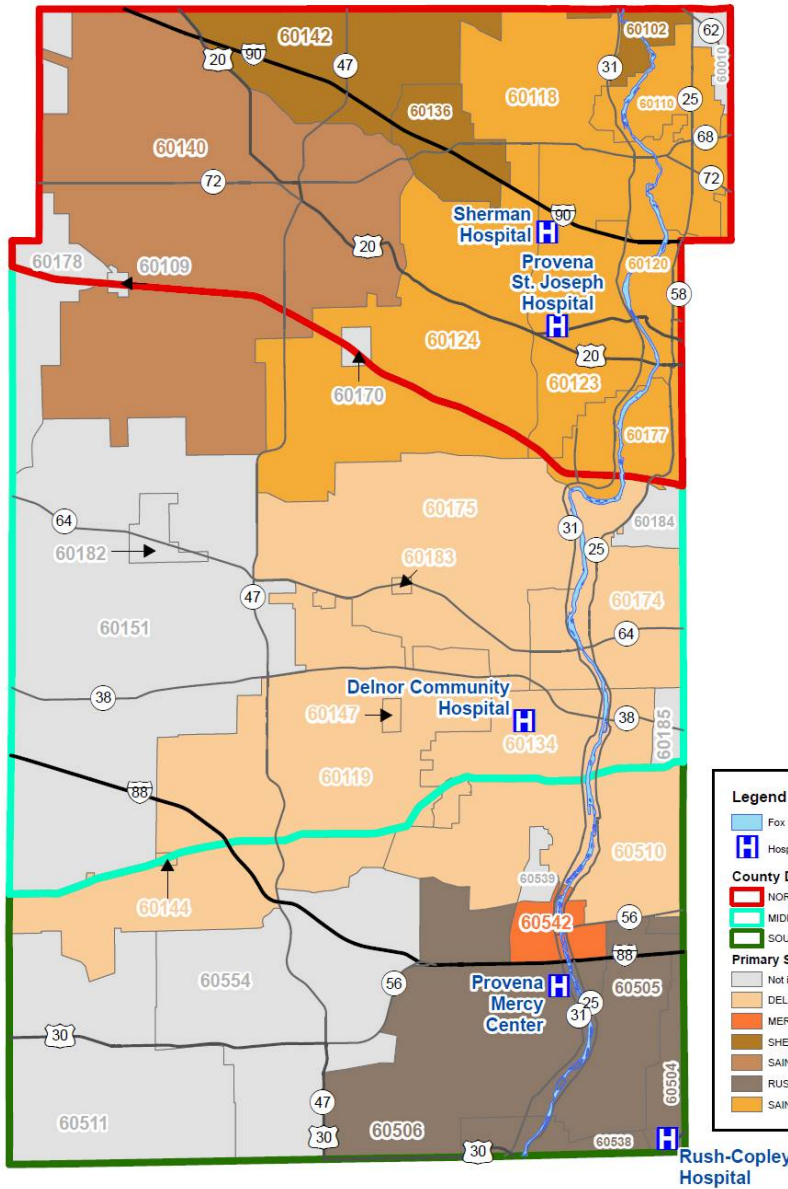
Kane Assessment Data Sources

- 2010 US Census
- Illinois Department of Public Health
 - Birth, death, disease, hospitalization statistics
 - Surveys
- Kane County Offices & Departments
 - Housing
 - Transportation
 - Health
- Resident telephone survey
- Resident focus groups
- Resident online survey
- Community meetings



Assessment examined all health factors

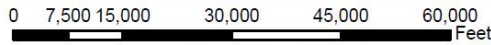
- Social, education and economic factors
- Environmental factors
- Physical health
- Mental health
- Health behaviors and health practices
- Community health resources



The Zip Code layer was created using data provided by ESRI's website, as the Kane County Geographic Information System. The map does not represent a warranty. No accuracy is assumed for the data. It should be used for informational purposes only. See the recorded documents for more detailed legal information.

Legend

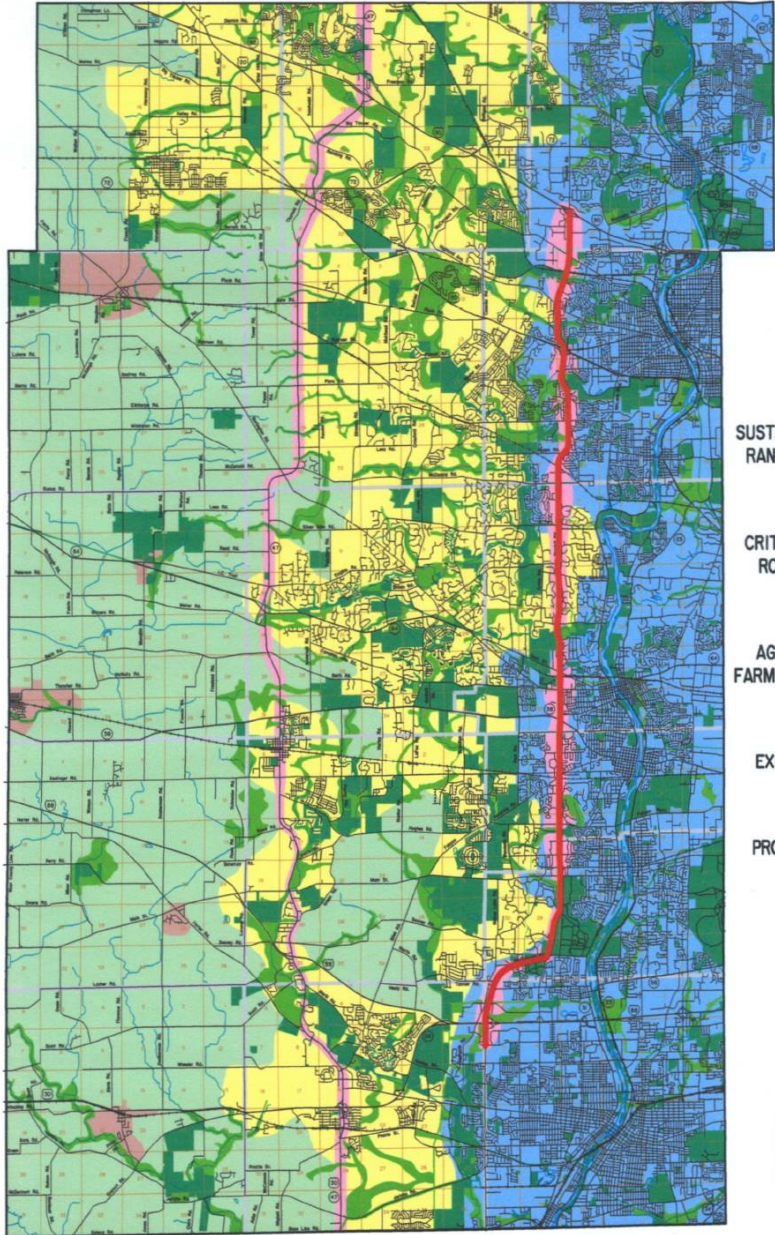
- Fox River
- Hospitals
- County Divisions**
- NORTH
- MIDDLE
- SOUTH
- Primary Service Areas**
- Not in a Primary Service Area
- DELNOR
- MERCY
- SHERMAN
- SAINT JOSEPH
- RUSH COPLEY/MERCY
- SAINT JOSEPH/SHERMAN




Primary Service Areas for Kane County Hospitals



2040 CONCEPTUAL LAND USE STRATEGY MAP




SUSTAINABLE URBAN AREA
RANDALL BRT CORRIDOR


CRITICAL GROWTH AREA
ROUTE 47 CORRIDOR


AGRICULTURAL/FOOD,
FARM, SMALL TOWN AREA


EXISTING OPEN SPACE


PROPOSED OPEN SPACE

North


Leading Health Indicators		Kane	Illinois	US
Tobacco Use	Current smoker	12.0	16.9	17.3
Cancer	Cancer mortality	164.5	186	178.4
Physical Activity	Meets recommended level of physical activity	53.5	51.8	51.0
Responsible Sexual Behavior	High risk behavior - Used intravenous drugs; Treated for STD; Exchanged money or drugs for sex; Anal sex without a condom in the past year	2.8	3.7	3.6
Hospitalization	Hospitalization for ambulatory care sensitive conditions per 100,000 Medicare enrollees	75	83	No data
				Better than IL
				Same as IL
Overweight and Obesity	Overweight	34.5	34.5	36.2
				Worse than IL
Responsible Sexual Behavior	Chlamydia Rate per 100,000 residents	351.1	354.4*	401.3
Mental Health	Ever been told by MD that you have depressive disorder	13.2	13.5	16.5
Environmental Quality	Recreational facilities per 100,000 population	9.0	10	No data
Overweight and Obesity	Obese/extremely obese	29.4	28.7	27.5
Immunization	Appropriate Immunization for WIC 24 - 36 month olds	53.3	81.9	78.3
Access to Care	Ratio of population to primary care physicians	1590:1	778:1	No data
Infectious Diseases	Tuberculosis rate	6.02	2.90	4.28
Substance Use	Binge drinking	27.6	17.8	15.0
Injury and Violence	Driving while drunk in past 30 days	2.5	No data	1.8
Nutrition	At least 5 servings of fruits and veg a day	14.4	22.5	23.4



[Home](#) [About Us](#) [Contact Us](#) [Links](#) [News & Health Alerts](#) [Services A to Z](#) [Search](#) [Translator](#)

MENU:

[Home](#)

[Office of Community Health Resources](#)

[Division of Disease Prevention](#)

[Division of Health Promotion](#)

[Healthcare Providers Page](#)

[Services A to Z](#)



Community Health Assessment

A Webinar was created so that the public can view the results of the 2011 Kane County Community Health Assessment. Below are two options for viewing this information.

Full Webinar (90 minutes)

The full webinar will take approximately 90 minutes to complete due to the large amount of data we would like to present and review with you.

You are able to pause it at any time as well as skip forward and backward.

It has been broken down into 10 sections and slide #3 provides a table of contents, detailing the slide numbers and amount of time each section will take.

[CLICK HERE to access the full Health Assessment Webinar](#)

Community Health Assessment Executive Summary (13 minutes)

This Executive Summary provides an overview and high-level detail about the 9 key opportunities for community health improvement we have identified through the community health assessment.

It draws from the longer, more comprehensive 90 minute webinar that provides expanded detail about the data collected and analyzed throughout the assessment process.

[CLICK HERE to access the shorter Executive Summary](#)

Note: To view, you will be asked for your **email address, name, and organization.** If you are a private citizen and not part of an organization or business, please enter the word **none** in the organization box.

Thanks to all who participated in the 2011 Community Health Assessment Survey

Kane County Health Assessment Findings: *Threats to Community Health*

Obesity

Chronic Diseases

Infant Mortality

Childhood Lead Poisoning

Communicable Disease

Poor Social & Emotional Wellness



Kane County Context for Health Improvement Priorities

- Significant social and economic changes
- Significant population growth
- Significant changes in population make-up
 - 2nd youngest population in Illinois
 - Yet 45-64 year olds most rapidly growing Kane population segment

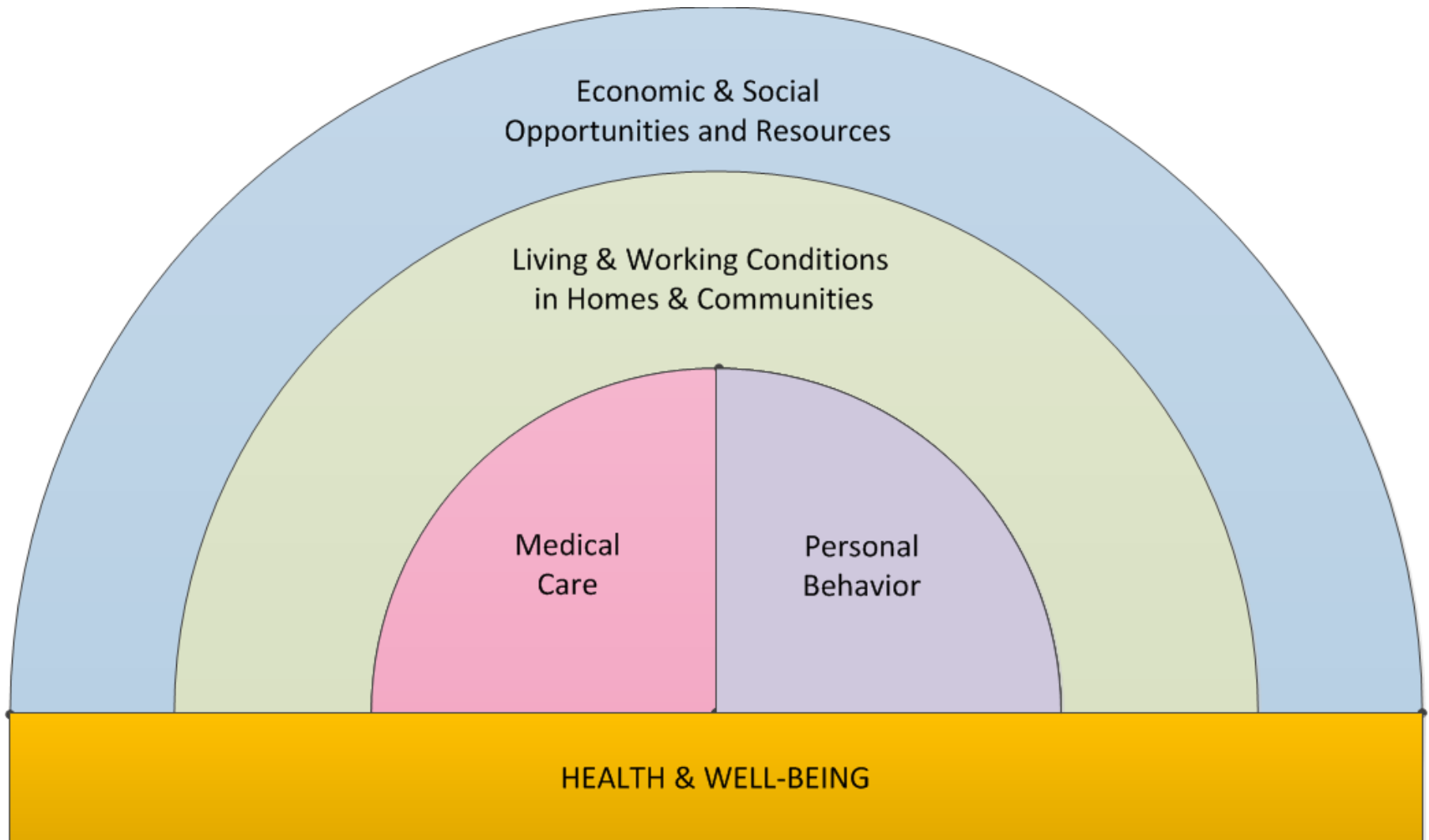


Health Improvement Plan: Assumptions & Requirements

- Health determined by multiple factors
- Community plan, **NOT** a Health Department plan
- Focus across the lifespan
- Recommend evidence-based strategies
- Inter-action between/across strategies
- Measurement and accountability



Determinants of Health



Recommended Community Health Improvement Priorities

Priority 1

Support Health Behaviors that Promote Well-Being and Prevent Disease

Priority 2

Increase Access to High Quality, Holistic Preventive and Treatment Services Across the Health Care System

Priority 3

Support & Create Health Promoting Neighborhoods, Towns & Cities

Priority 4

Promote Social, Economic and Educational environments that optimize health

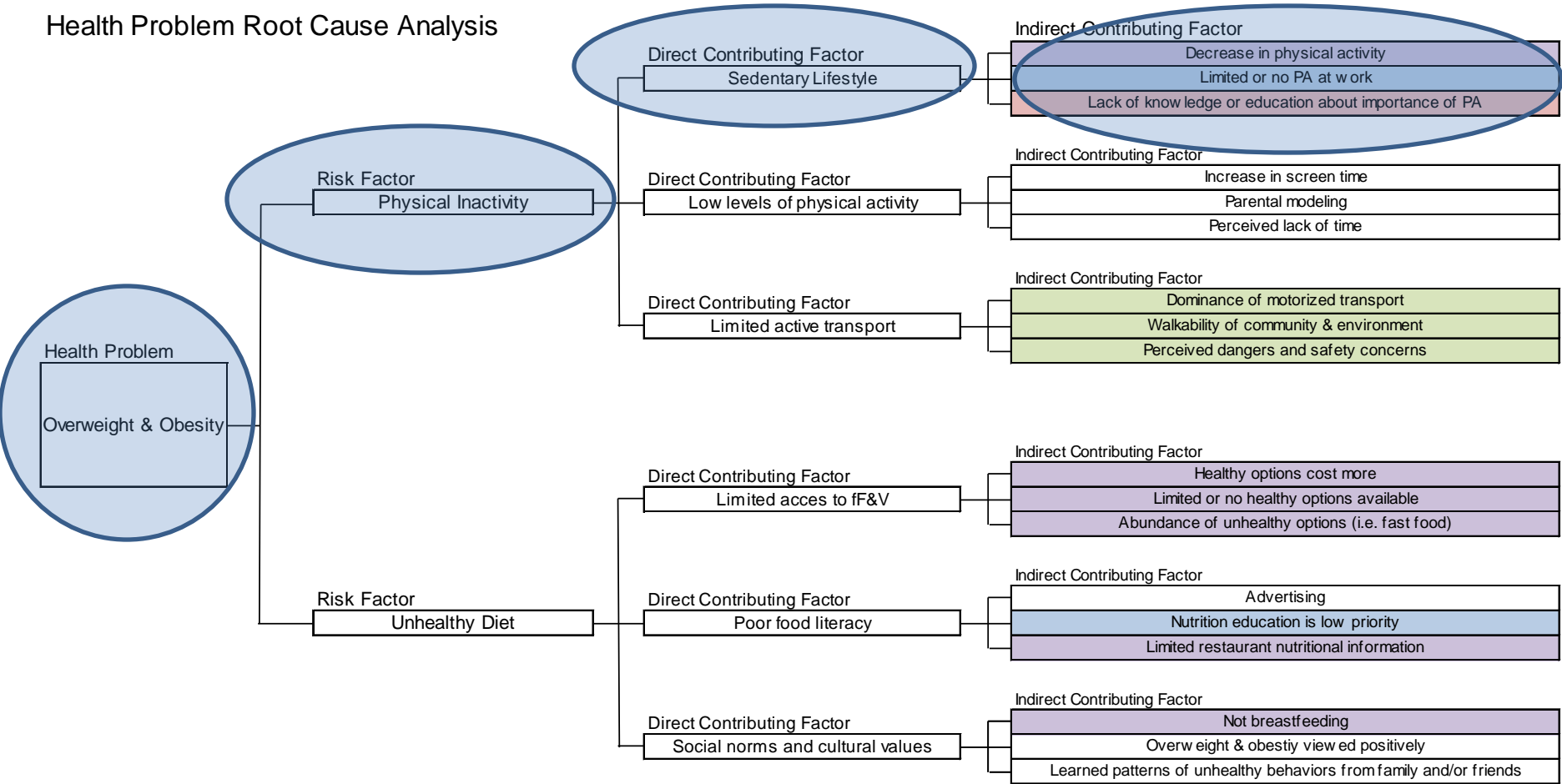
<i>Threats to Community Health</i>	<u>Priority 1</u> Support Health Behaviors that Promote Well-Being and Prevent Disease	<u>Priority 2</u> Increase Access to High Quality, Holistic Preventive and Treatment Services Across the Health Care System	<u>Priority 3</u> Support & Create Health Promoting Neighborhoods, Towns & Cities	<u>Priority 4</u> Promote Social, Economic and Educational environments that optimize health
Obesity	X	X	X	X
Chronic Diseases	X	X	X	X
Infant Mortality	X	X	X	X
Childhood Lead Poisoning	X	X	X	X
Communicable Disease	X	X	X	X
Poor Social & Emotional Wellness	X	X	X	X

2 out of 3



**Kane County Adults are
overweight or obese**

Health Problem Root Cause Analysis



Example: *Strategies to reduce obesity*



Increase access to, and consumption, of fresh fruits and vegetables.



Increase the proportion of residents of all ages that have regular, ongoing sources of medical and dental care.



Assure access to safe playgrounds, parks, trails and open space



Increase the proportion of children who have high-quality early developmental support, especially in child care and education.



How will we know if we are making progress?

Strategy	Measure	Data Source	Evidence
<p>Increase access to, and consumption, of fresh fruits and vegetables.</p>	<p>Percentage of Kane County adults who report eating at least five servings of fruits and vegetables per day.</p> <p>2011 Baseline: 14.4% of adults 25.5% of children</p> <p>2016 Goal:</p> <ul style="list-style-type: none"> • 30% for adults (100% improvement) • 40% for children. (60% improvement) 	<p>Kane County Community Health Survey or Illinois BRFSS</p>	<p>Access to and availability of healthier foods can help people follow healthful diets. For example, better access to retail venues that sell healthier options may have a positive impact on a person's diet; these venues may be less available in low-income or rural neighborhoods. (HP2020)</p>

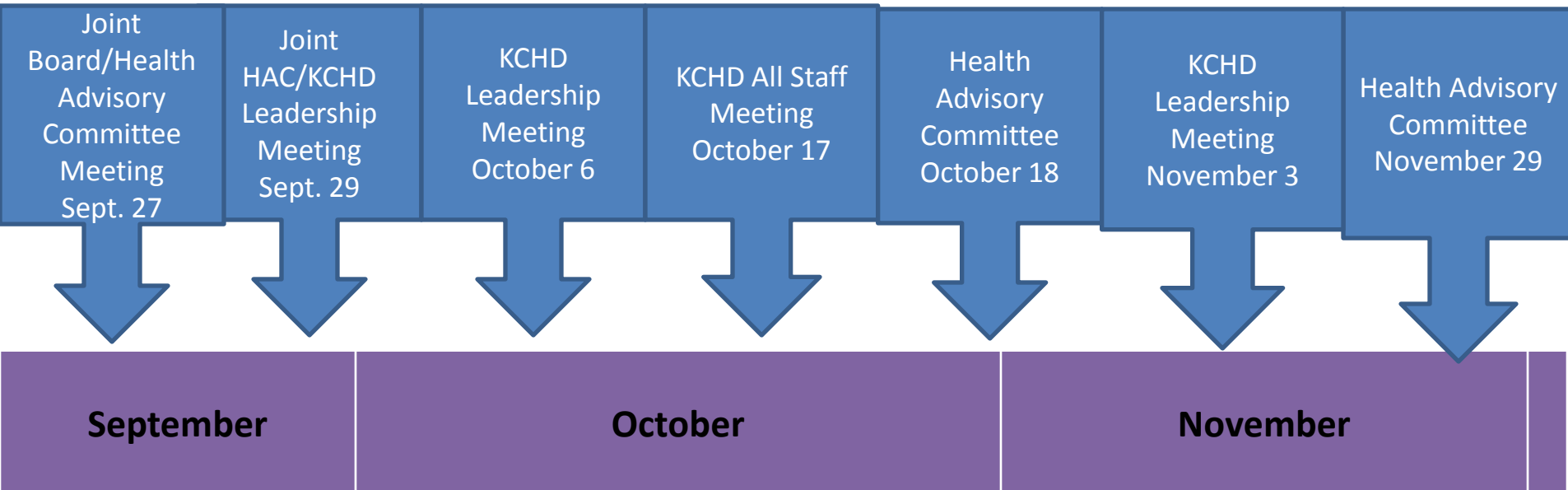
Next steps:

- Questions and comments today
- Complete draft report by January 31, 2012
- Public comment February, 2012
- Adoption: March, 2012



2011 Kane County Health Department: *Strategic Planning Update*

KCHD Strategic Planning Activities



Objectives:

- Review/revise mission statement
- Assess external and internal environments
- Review/update strategies

Revised Mission Statement

In active partnership with our community, the Kane County Health Department improves the quality of life and well-being of all residents by developing and implementing local policies, systems, and services that protect and promote health and prevent disease, injury and disability.

Key External Drivers

1. Funding and the broader impact of the economy.
2. Changing demographics and diversity.
3. Epidemic of obesity and chronic disease.
4. Integration with land use and transportation planning.
5. Health care reform.
6. Information technology.

Process re: Key Drivers

HAC and Leadership groups applied following to each of the 6 Key Drivers:

- Five 'whys' (root cause analysis)
- "What" analysis (strategic implications)
- Assets and barriers analysis
- Identification of cross cutting focus areas for potential strategic initiatives

Build mission-focused culture

Build a sustainable organizational culture that is based on our core values and focused on achieving our mission.

Model Stewardship

Model responsible stewardship of public resources by providing efficient, high quality and high impact population health services.

Implement Informatics

Fully meet or exceed national public health informatics standards in order to assure timely, efficient and effective communications.

Sustain Partnerships

Sustain focused, effective partnerships to address identified community health priorities and get results that improve population health.

Enhance health communication

Enhance provision of health information to our diverse community that is: tailored, reliable, real-time and actionable.

Sample Implementation Plan

Strategy	Initiative & Owner	Output & Date	Outcome
Implement Informatics	Make key community health data easily accessible: OCHR	By 6/30/12 Kanehealth.com has community health data repository	Actionable health information for individuals, partnerships and groups

Strategies

Initiatives

Outputs

Outcomes

Build mission-focused culture

Model Stewardship

Implement Informatics

Sustain Partnerships

Enhance health communication



Next steps:

- Questions and comments today
- Complete draft report by January 31, 2012
- Adoption: March, 2012