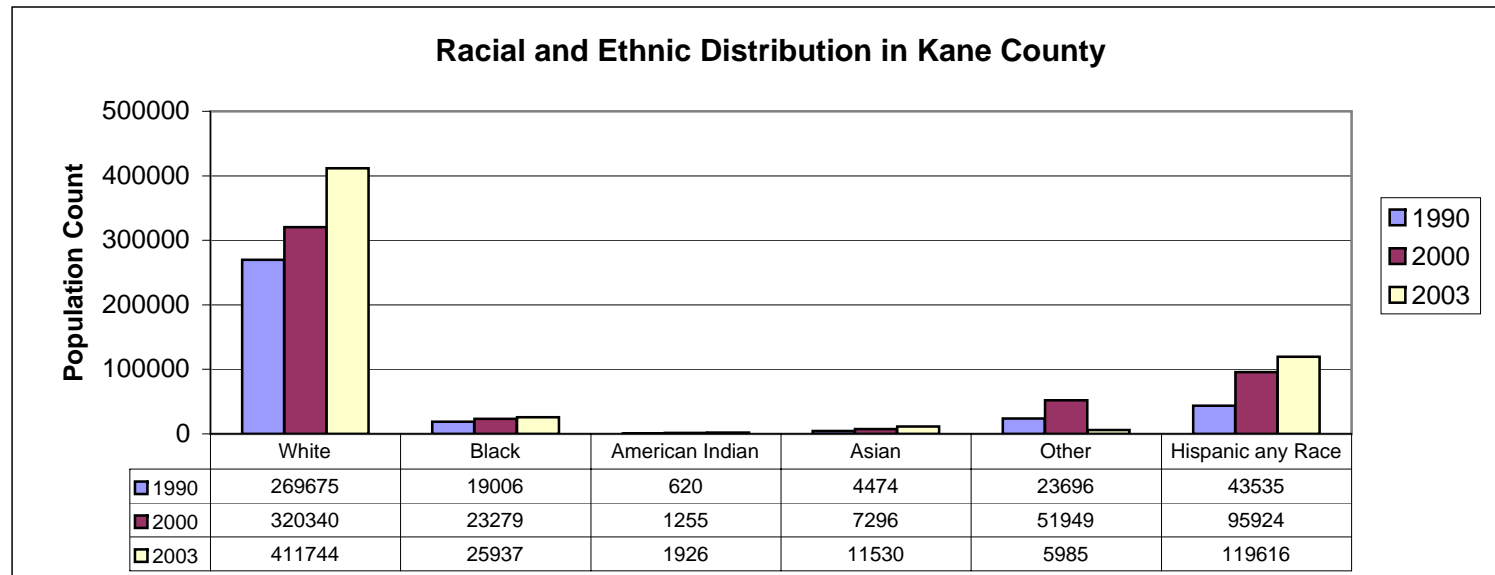
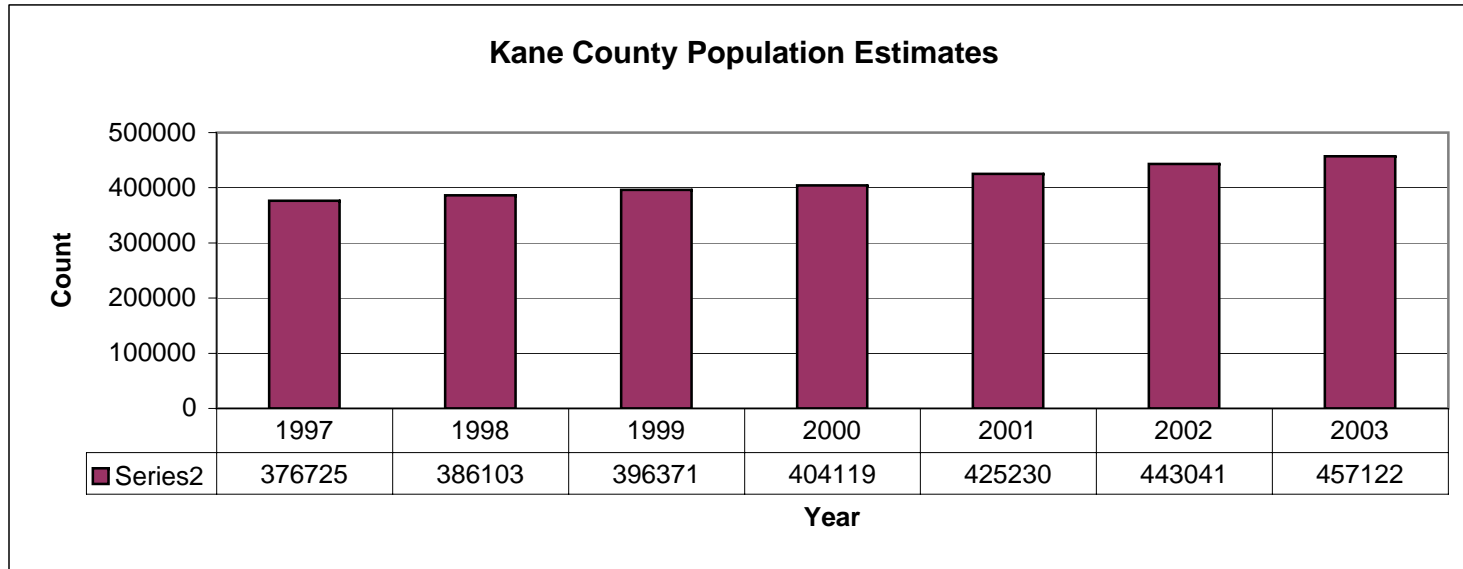
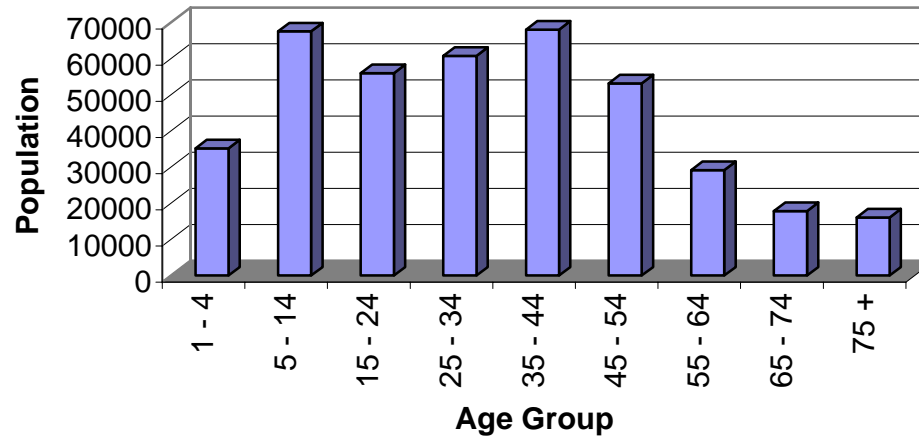


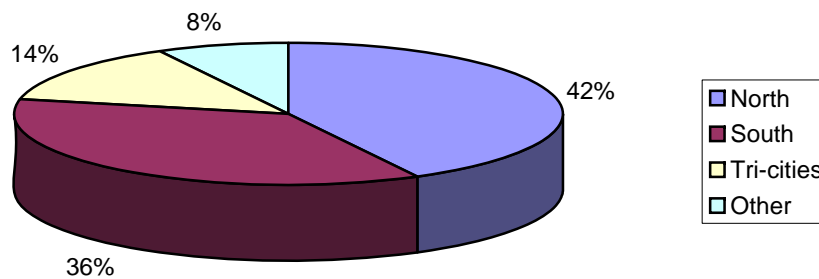
Selected Charts



Age Distribution of Kane County, 2000

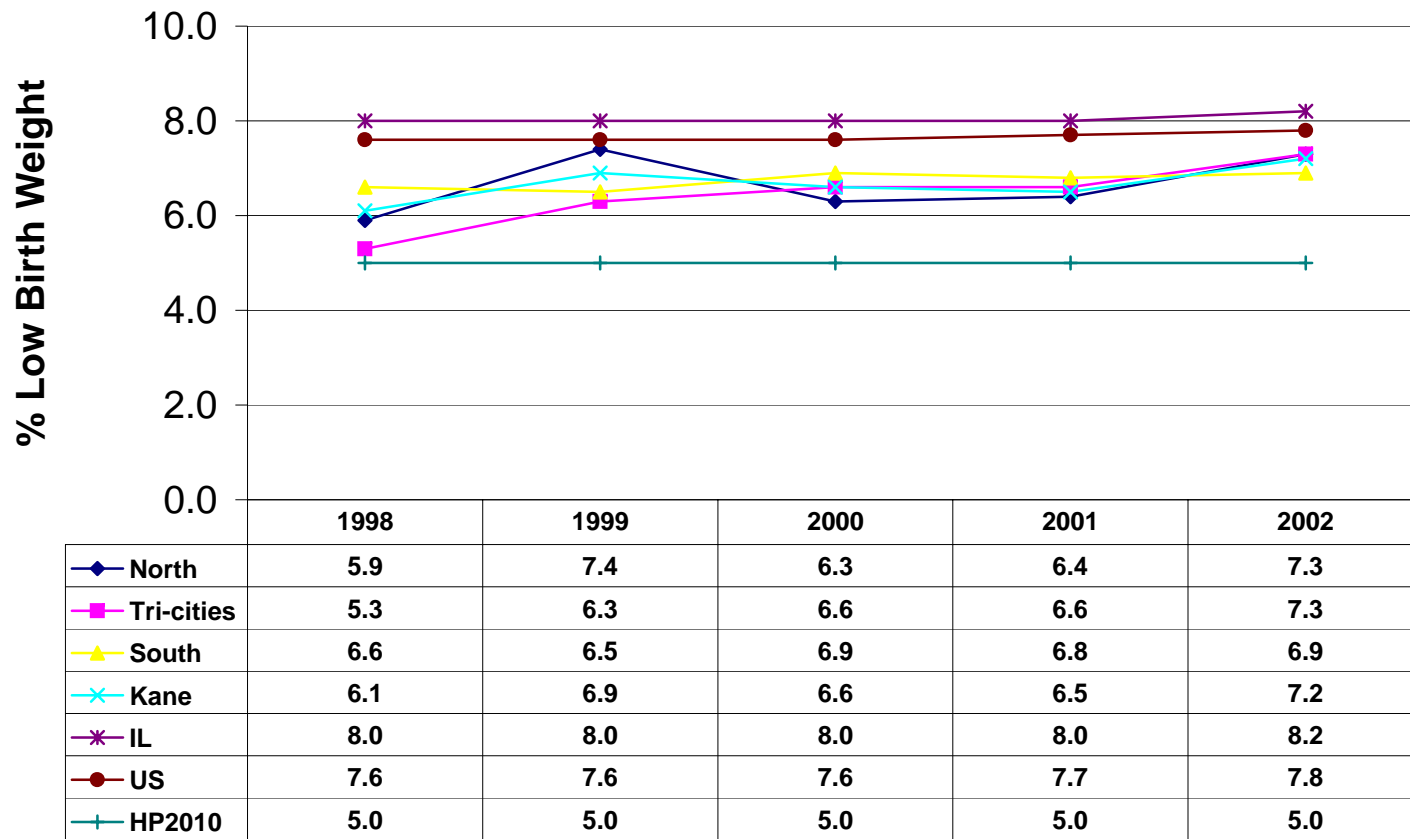


Distribution of Kane County Births, 2003

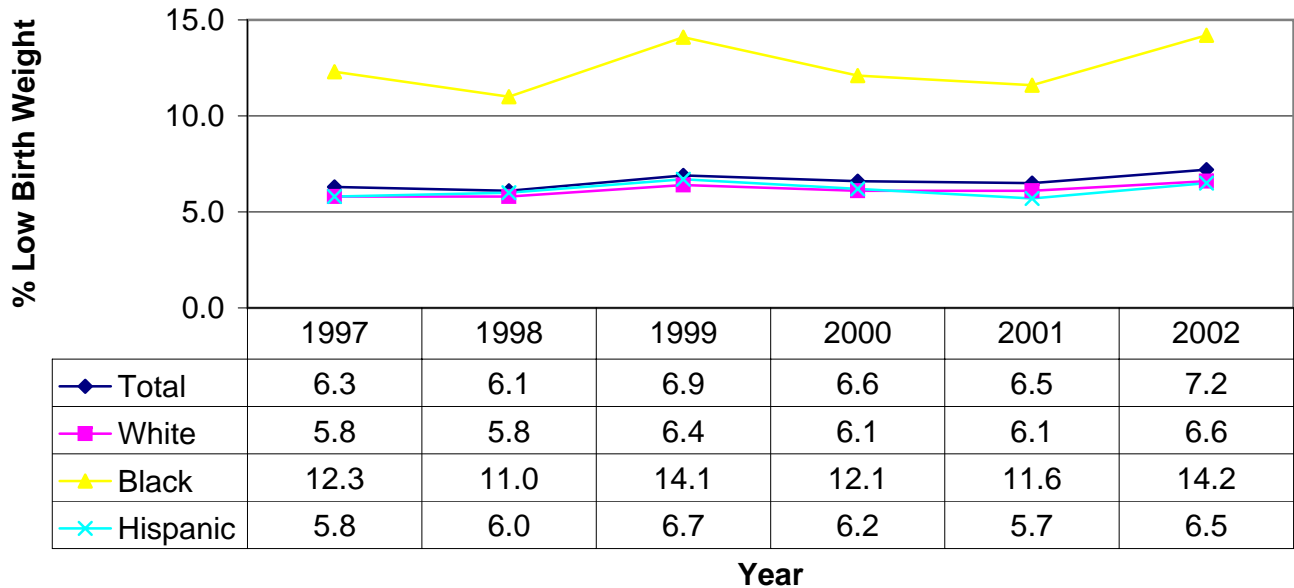


Total Kane Births: 8,397

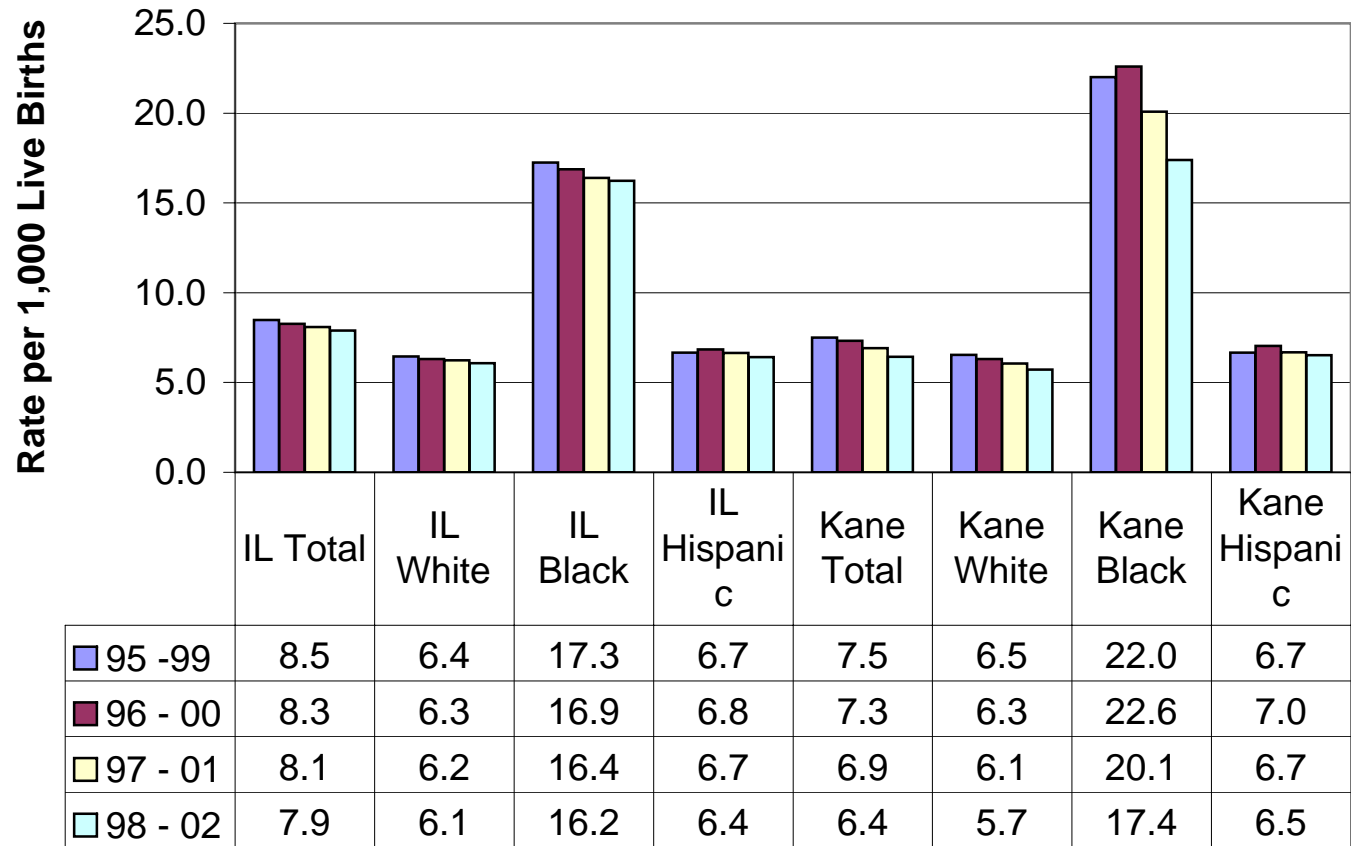
Low Birth Weight In Kane County Regions, 2002



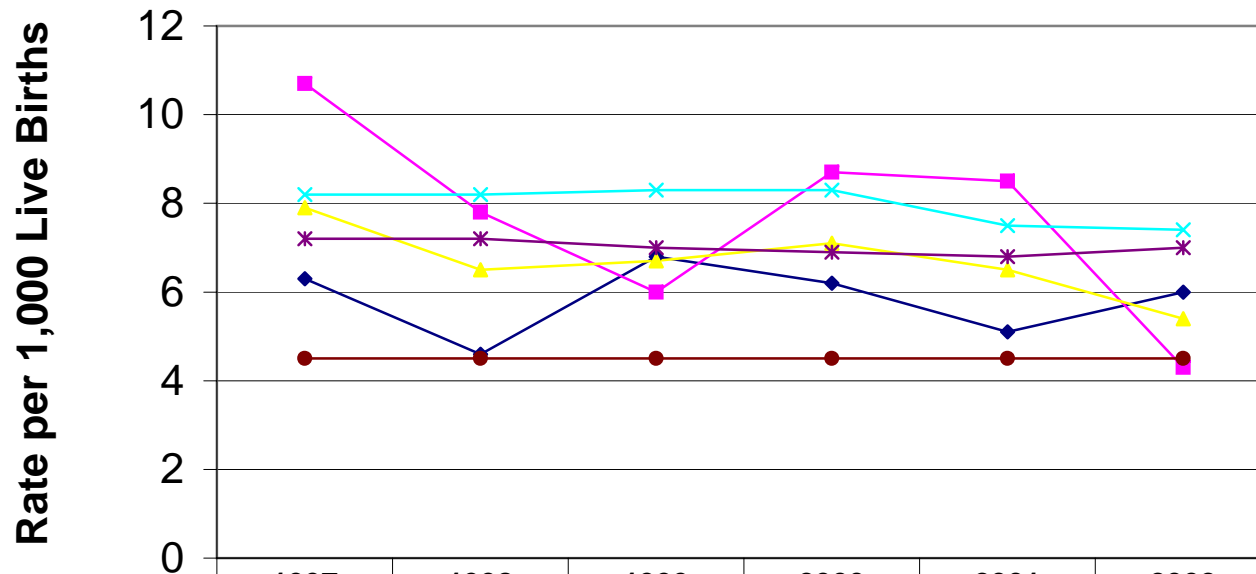
Kane County Low Birth Weight By Race/Ethnicity



Infant Mortality Rates for Kane and IL By Race/Ethnicity: 5-Year Aggregates, 1995 - 2002

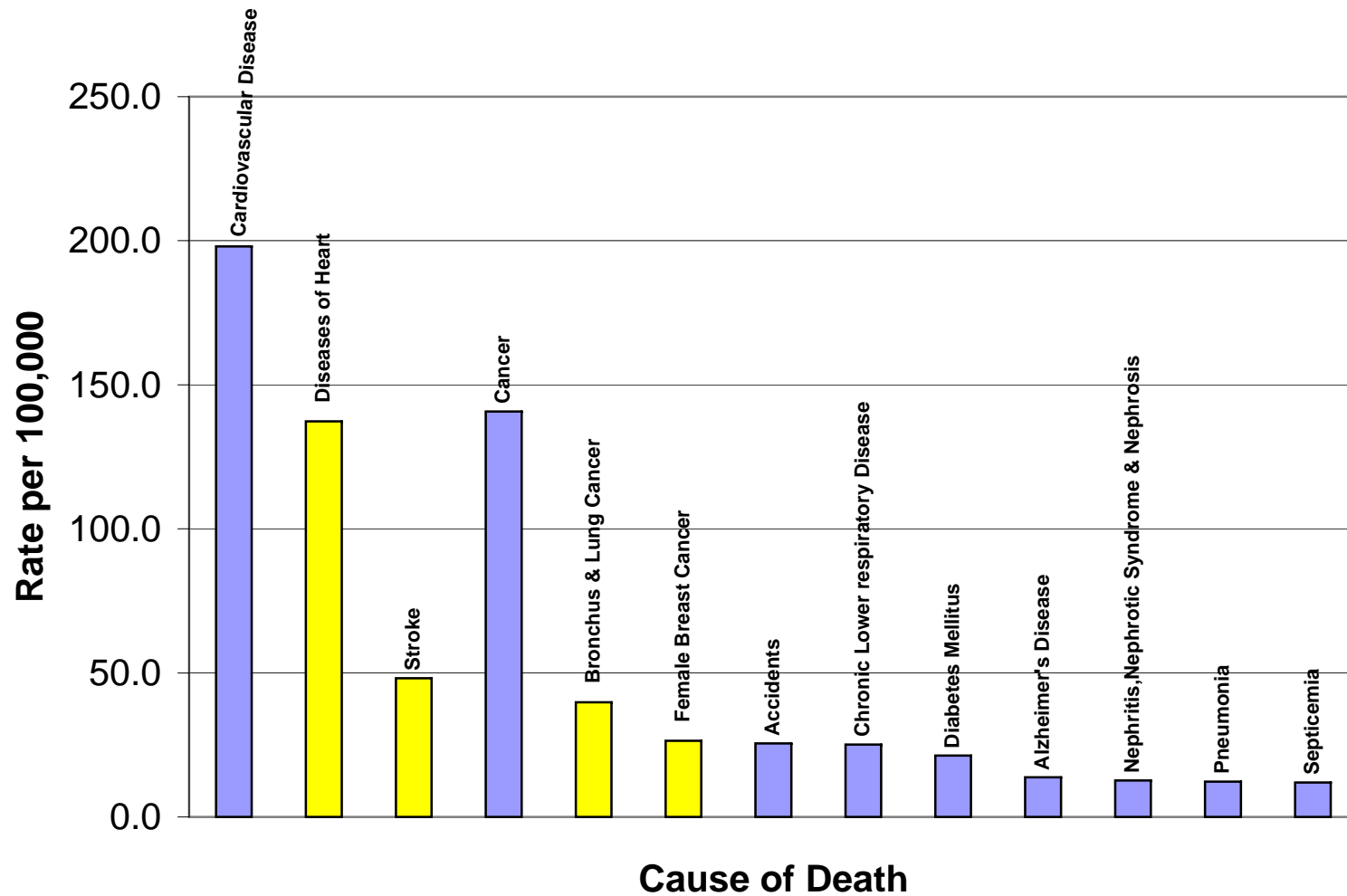


Infant Mortality By Region, 1997 - 2002

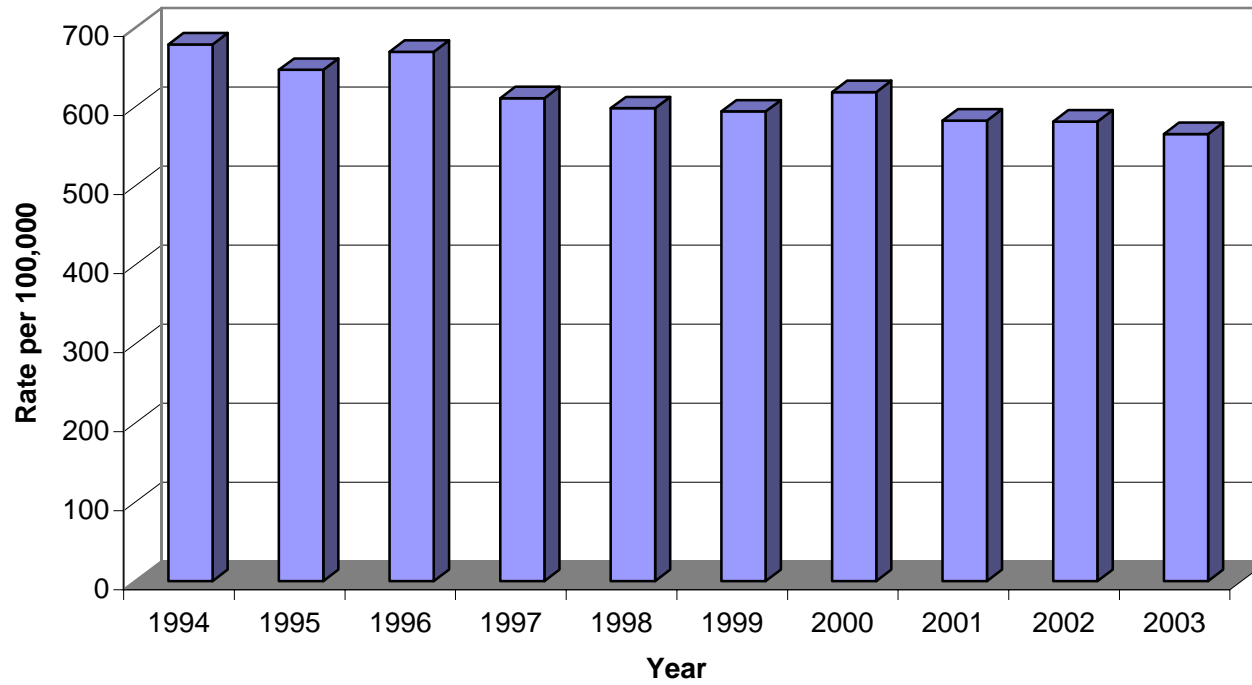


	1997	1998	1999	2000	2001	2002
◆ North	6.3	4.6	6.8	6.2	5.1	6.0
■ South	10.7	7.8	6	8.7	8.5	4.3
▲ Kane	7.9	6.5	6.7	7.1	6.5	5.4
✕ IL	8.2	8.2	8.3	8.3	7.5	7.4
* US	7.2	7.2	7.0	6.9	6.8	7.0
● HP2010	4.5	4.5	4.5	4.5	4.5	4.5

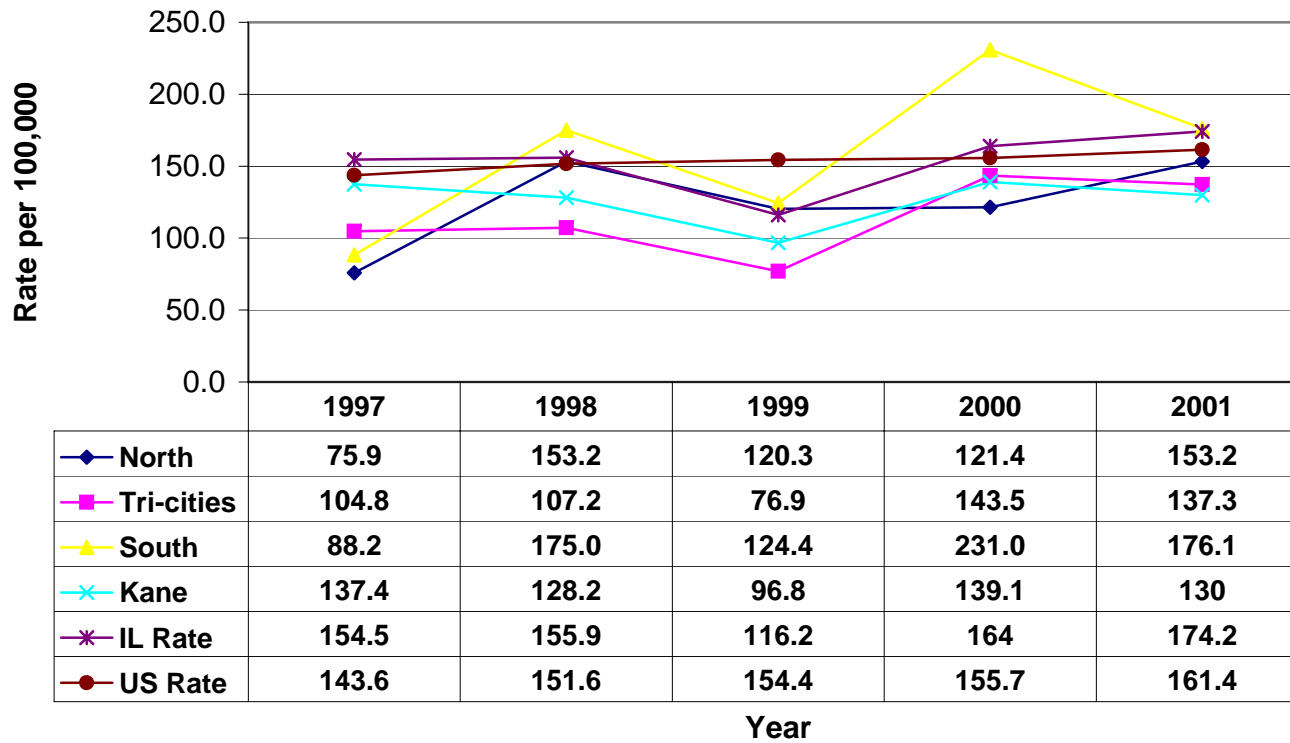
Select Causes of Death for 2002 in Kane County



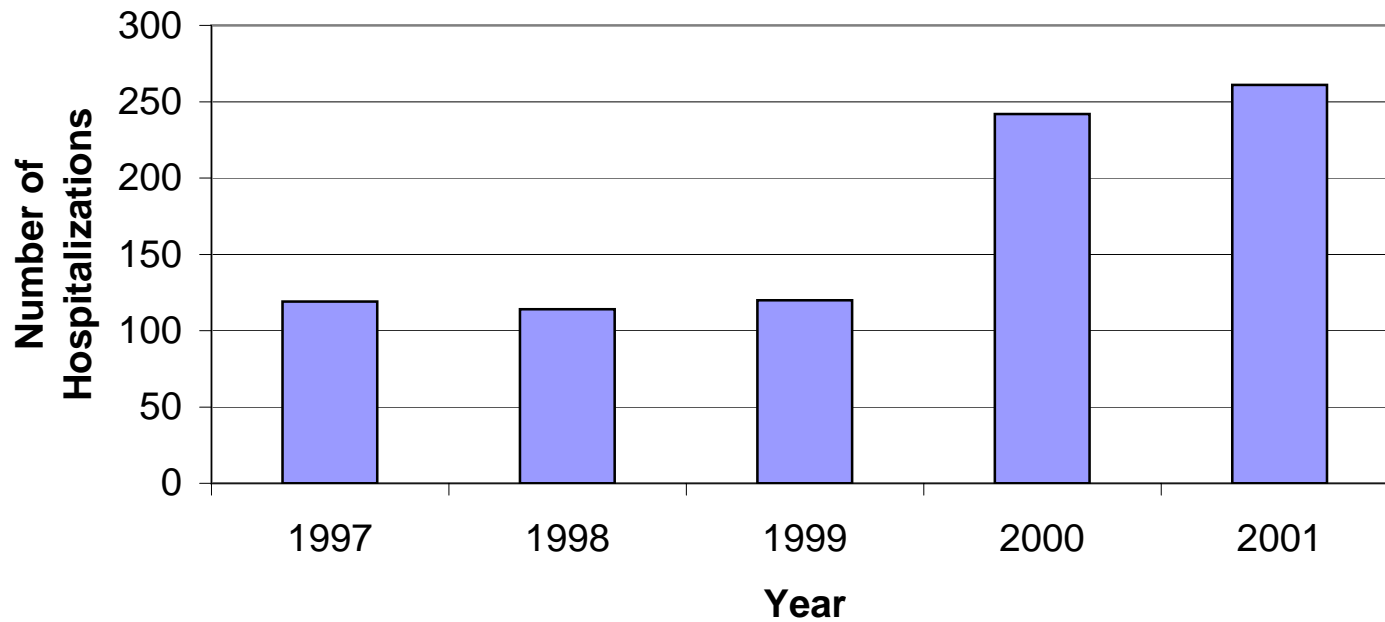
Trends In Kane County Mortality Rate



Diabetes Hospitalizations for Kane County Regions, 1997 - 2001

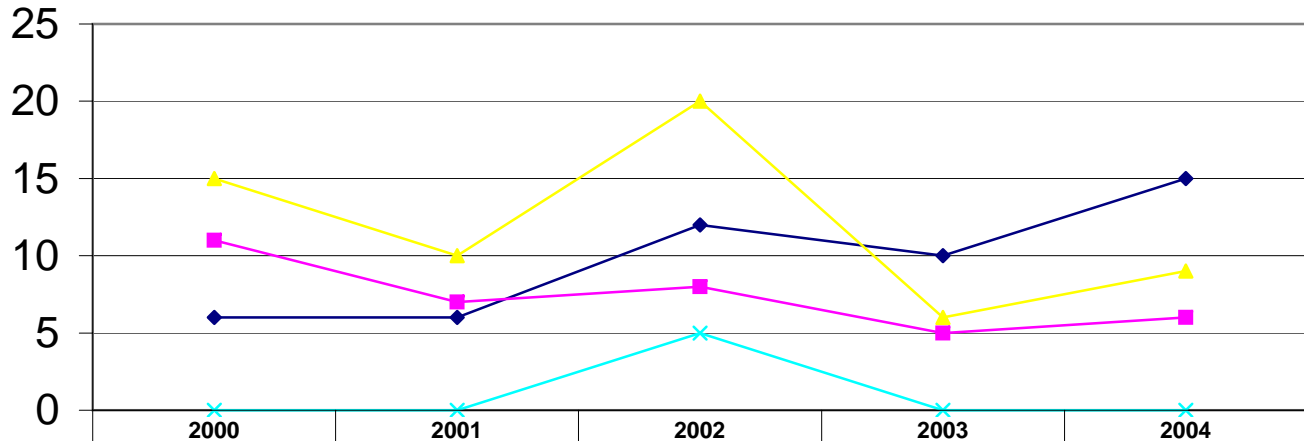


Uncontrolled Hypertension Hospitalizations in Kane County, 1997-2002



Reported HIV Cases in Kane County, 2000 to 2004

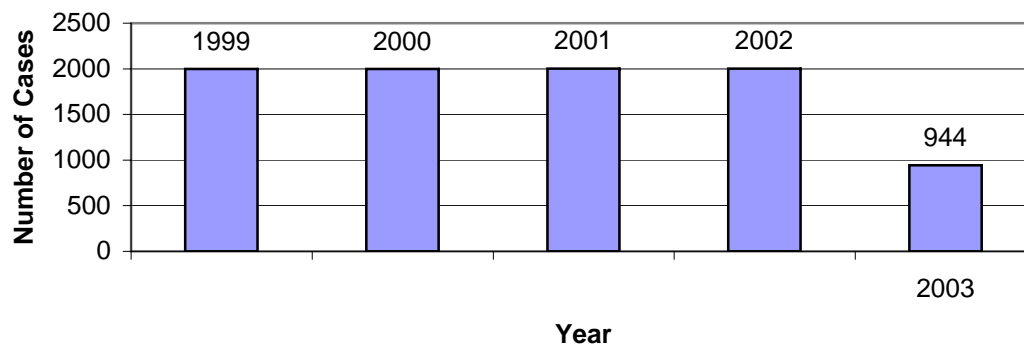
of Cases Reported



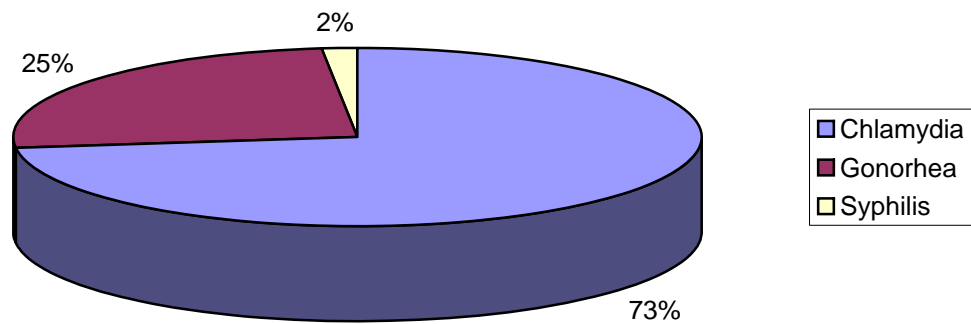
◆ Black Non-Hispanic	6	6	12	10	15
■ Hispanic	11	7	8	5	6
▲ White Non-Hispanic	15	10	20	6	9
× Other/Unk	0	0	5	0	0

Year

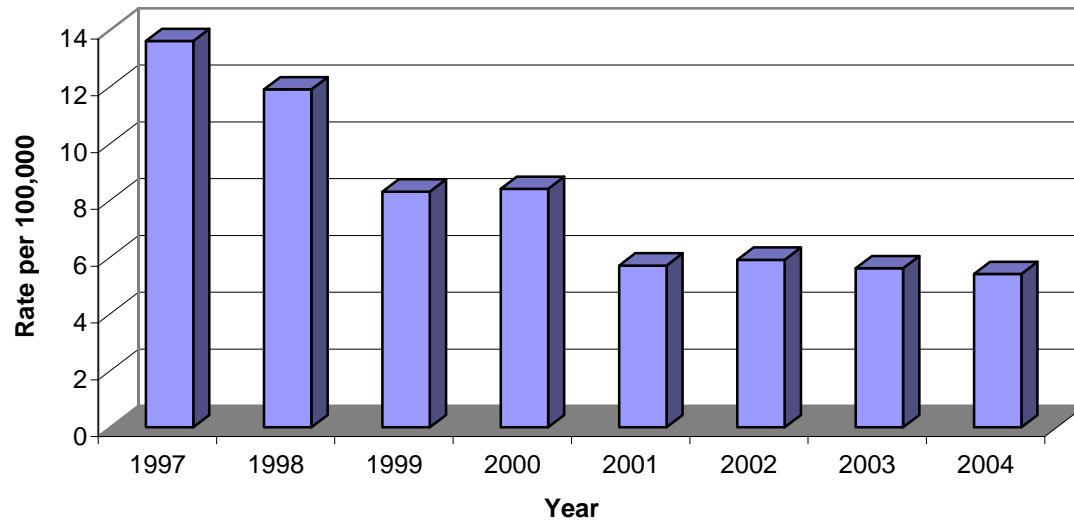
**Reported Chlamydia Cases In Kane County,
1999 - 2003**



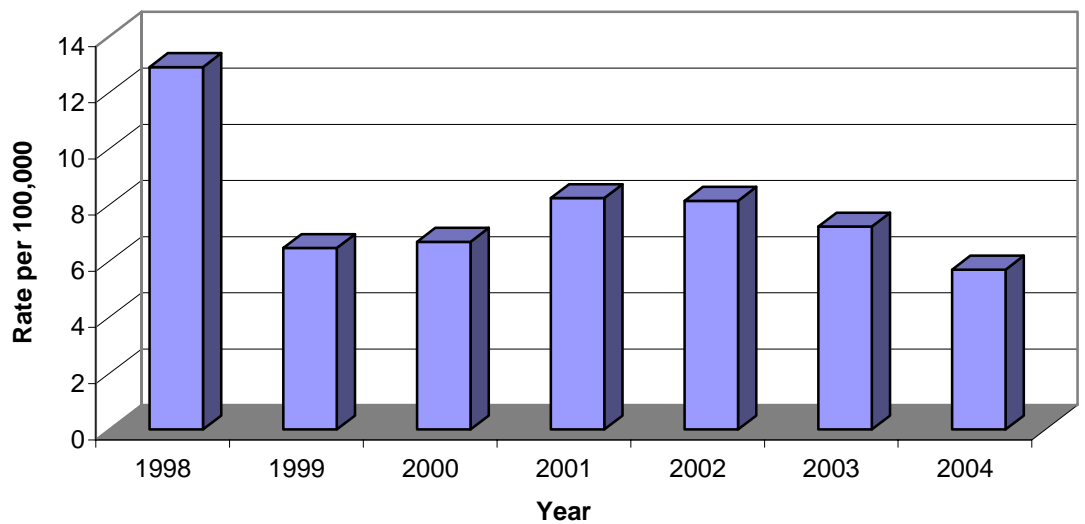
STD Cases In Kane County By Type, 1999 - 2003



Trends In Child Abuse and Neglect, 1997 to 2003



Suicide Mortality Rates, 1998 to 2004



Demographic Profile of Kane County Regions

Note: The rest of Kane County communities not listed below are included in the Kane County Total

Northern Kane (NK) includes: Algonquin, Barrington Hills, Burlington, Carpentersville, East Dundee, Elgin, Gilberts, Hampshire, Pingree Grove, Sleepy Hollow, South Elgin, West Dundee

Tri-cities includes (TC): Batavia, Elburn, Geneva and St Charles

Southern Kane (SK) County includes: Aurora, Montgomery and North Aurora

Based on US Census 2000

Selected Characteristics	North		Tri-cities		South		Other Kane		Kane County	
	Number	Percent	Number	Percent	Number	Percent	Number	Percent	Number	Percent
Total Population	142,502	100.0	73,864	100.0	114,730	100.0	73,023	100.0	404,119	100.0
Male	71,592	50.2	36,524	49.4	57,952	50.5	37,177	50.9	203,245	50.3
Female	70,910	49.8	37,340	50.6	56,778	49.5	35,846	49.1	200,874	49.7
Race/Ethnicity										
White alone	107,470	75.4	69,790	94.5	75,712	66.0	67,368	92.3	320,340	79.3
Black alone	7,094	5.0	1,237	1.7	13,276	11.6	1,672	2.3	23,279	5.8
American Indian alone	563	0.4	80	0.1	468	0.4	144	0.2	1,255	0.3
Asian or Pacific Islander alone	4,151	2.9	1,069	1.4	1,385	1.2	691	0.9	7,296	1.8
Other races alone	19,350	13.6	959	1.3	20,412	17.8	11,228	15.4	51,949	12.9
Two or more races	3,874	2.7	729	1.0	3,477	3.0	855	1.2	8,935	2.2
Hispanic, of any Race	41,207	28.9	3,388	4.6	45,393	39.6	5,936	8.1	95,924	23.7
<p><i>Northern Kane County makes up about 35% of total Kane County population, while Southern Kane and Tri-cities account for 28% and 18% respectively. Tri-cities is more homogenous in terms of race/ethnicity than both ends of the county, with 94.5% white compared to 75% and 66% in North and South respectively. The Hispanic population in North and South are 29% and 40% respectively, compared to 5% in the Tri-cities.</i></p>										
Age Distribution										
Under 5 years	13,675	9.6	5,336	7.2	11,474	10.0	4,764	6.5	35,249	8.7
5 - 9	12,569	8.8	6,283	8.5	10,169	8.9	6,096	8.3	35,117	8.7
10 - 14	10,638	7.5	6,459	8.7	8,758	7.6	6,635	9.1	32,490	8.0
15 - 19	10,047	7.1	5,825	7.9	8,695	7.6	5,911	8.1	30,478	7.5
20 - 44	59,262	41.6	25,650	34.7	46,325	40.4	23,213	31.8	154,450	38.2
45 - 64	25,417	17.8	17,137	23.2	19,568	17.1	20,232	27.7	82,354	20.4
65 and Over	10,894	7.6	7,174	9.7	9,741	8.5	6,172	8.5	33,981	8.4
<p><i>The Tri-cities has an older population compared to North and South with 33% of its population aged 45+, compared to North and South at 25% and 26% respectively. Also, SK and NK have 10% of their populations under age 5 compared to 7% for TC.</i></p>										

Demographic Profile of Kane County Regions

Note: The rest of Kane County communities not listed below are included in the Kane County Total

Northern Kane (NK) includes: Algonquin, Barrington Hills, Burlington, Carpentersville, East Dundee, Elgin, Gilberts, Hampshire, Pingree Grove, Sleepy Hollow, South Elgin, West Dundee

Tri-cities includes (TC): Batavia, Elburn, Geneva and St Charles

Southern Kane (SK) County includes: Aurora, Montgomery and North Aurora

Based on US Census 2000

Selected Characteristics	North		Tri-cities		South		Other Kane		Kane County	
	Number	Percent	Number	Percent	Number	Percent	Number	Percent	Number	Percent
Educational Attainment										
Population 25 and Over	85,468	100.0	46,986	100.0	66,267	100.0	46,765	100.0	245,486	100.0
Less Than 9th Grade	10,079	11.8	1,081	2.3	10,771	16.3	1,795	3.8	23,726	9.7
9th to 12th, No Diploma	5,756	6.7	2,113	4.5	10,048	15.2	7,045	15.1	24,962	10.2
High School Graduate or Equivalent	22,044	25.8	9,509	20.2	17,785	26.8	11,993	25.6	61,331	25.0
Bachelor's Degree or Higher	18,471	21.6	21,233	45.2	12,365	18.7	15,931	34.1	68,000	27.7
<i>More SK (27%) and NK (26%) residents had less than 9th grade education compared to 2% TC. 45% of Tri-cities residents hold a Bachelor's degree or higher compared to 22% and 19% in North and South respectively. Overall KC is 28%.</i>										
Residence in 1995 (Pop >=5)										
Same House in 1995	128,484	100.0	68,631	100.0	103,191	100.0	68,577	100.0	368,883	100.0
Different County in 1995	64,685	50.3	37,521	54.7	53,380	51.7	43,435	63.3	199,021	54.0
	29,767	23.2	16,198	23.6	17,033	16.5	12,969	18.9	75,967	20.6
<i>About half of residents across the board lived in the same house since 1995</i>										
Language Spoken at Home(pop.>=5)										
English Only	128,484	100.0	68,631	100.0	103,191	100.0	68,577	100.0	368,883	100.0
Spanish	88,779	69.1	63,195	92.1	62,656	60.7	61,605	89.8	276,235	74.9
Speak English Less Than Well	33,017	25.7	2,881	4.2	37,239	36.1	4,409	6.4	77,546	21.0
	13,421	10.4	776	1.1	14,291	13.8	19,973	29.1	48,461	13.1
<i>Only 1% of residents >=5 in the Tri-cities spoke Spanish and spoke English less than well, compared to 10% in the North and 14% in the South. Overall in Kane County, Spanish speaking residents who spoke English less than well were 13%</i>										
Employment Status >=16										
In Labor Force	103,273	100.0	54,436	100.0	82,429	100.0	54,594	100.0	294,732	100.0
Unemployed	73,578	71.2	38,974	71.6	71,912	87.2	21,560	39.5	206,024	69.9
Not in Labor Force	3,590	3.5	957	1.8	3,837	4.7	1,396	2.6	9,780	3.3
	29,695	28.8	15,462	28.4	27,071	32.8	16,480	30.2	88,708	30.1

Demographic Profile of Kane County Regions

Note: The rest of Kane County communities not listed below are included in the Kane County Total

Northern Kane (NK) includes: Algonquin, Barrington Hills, Burlington, Carpentersville, East Dundee, Elgin, Gilberts, Hampshire, Pingree Grove, Sleepy Hollow, South Elgin, West Dundee

Tri-cities includes (TC): Batavia, Elburn, Geneva and St Charles

Southern Kane (SK) County includes: Aurora, Montgomery and North Aurora

Based on US Census 2000

Selected Characteristics	North		Tri-cities		South		Other Kane		Kane County	
	Number	Percent	Number	Percent	Number	Percent	Number	Percent	Number	Percent
Commuting to Work (workers >=16)	68,954	100.0	37,409	100.0	50,322	100.0	36,177	100.0	192,862	100.0
Worked at Home	1,835	2.7	1,526	4.1	1,122	2.2	2,053	5.7	6,536	3.4
Drove Alone	55,099	79.9	31,496	84.2	37,037	73.6	30,199	83.5	153,831	79.8
Carpooled	8,687	12.6	2,106	5.6	8,851	17.6	2,500	6.9	22,144	11.5
Public Transportation	1,521	2.2	1,304	3.5	1,589	3.2	828	2.3	5,242	2.7
Income Type (workers >=16)	69,966	100.0	38,009	100.0	51,496	100.0	33,391	100.0	192,862	100.0
Private Wage or Salary Workers	60,912	87.1	31,595	83.1	45,150	87.7	30,722	92.0	168,379	87.3
Government Workers	6,635	9.5	4,333	11.4	4,622	9.0	3,584	10.7	19,174	9.9
Unpaid Family Workers	146	0.2	60	0.2	66	0.1	120	0.4	392	0.2
Poverty Status in 1999										
Individuals Below Pov. Level	10,020	7.2	2,290	3.2	11,629	10.3	2,648		26,587	6.7
<i>Poverty level in the South is highest at 10% followed by North at 7%. Tri-cities poverty level is lowest at 3% Overall KC is 6.7%</i>										

Source: US Census Bureau

Unemployment Status for Select Communities in Kane County

	2004	2003	2002	2001	2000
Kane County	5.9	7.0	6.6	5.3	4.3
ALGONQUIN VILLAGE*	4.8	5.9	5.6	3.9	2.8
AURORA CITY*	6.5	8.1	7.5	5.8	4.6
BARTLETT VILLAGE*	4.9	5.7	5.4	4.1	2.7
BATAVIA CITY	4.6	4.8	5.0	3.4	2.6
CARPENTERSVILLE VILLAGE	8.1	9.3	8.9	8.2	6.7
ELGIN CITY*	7.5	9.3	8.8	7.3	5.7
HOFFMAN ESTATES VILLAGE*	4.8	5.5	5.6	4.4	2.7
ST. CHARLES CITY*	5.9	7.2	7.5	5.3	3.7
USA	5.5	5.8	5.9	4.8	4.0

Unemployment rates for most communities saw a decrease from 2003 to 2004 but were still much higher than their 2000 rates. Carpentersville and Elgin had the highest unemployment rates.

Source: IL Dept of Employment Securities

* May include non-Kane County part of community

Population Estimates, Kane County and Regions

	2004	2003	2002	2001	2000*	1999	1998	1997	1996	1995	1994
Kane County	472,482	457,122	442,010	424,547	404,119	402,622	391,686	381,807	371,145	360,416	349,361
Northern Kane	163,449	157,977	154,086	149,456	142,502	134,619	131,182	127,735	124,071	120,291	116,757
ALGONQUIN	6,207	6,066	5,756	5,352	5,022	2,977	2,861	2,743	2,580	2,388	2,203
BARRINGTON HILLS	123	119	112	109	97	141	140	140	140	136	135
BURLINGTON	486	477	471	462	452	478	468	460	452	441	430
CARPENTERSVILLE	35,980	34,815	34,225	32,807	30,586	28,411	26,975	25,559	24,489	23,773	23,397
EAST DUNDEE	3,145	3,136	3,127	3,104	2,948	3,416	3,316	3,175	2,993	2,750	2,690
ELGIN	77,356	76,507	75,816	74,901	74,013	71,088	70,337	69,854	69,145	68,188	66,920
GILBERTS	4,269	2,784	1,382	1,293	1,279	1,310	1,302	1,296	1,283	1,262	1,244
HAMPSHIRE	3,871	3,093	3,046	2,980	2,900	2,340	2,291	2,252	2,205	2,152	2,099
PINGREE GROVE	132	132	130	127	124	92	92	92	92	92	91
SLEEPY HOLLOW	3,706	3,707	3,676	3,617	3,553	3,673	3,654	3,640	3,615	3,572	3,516
SOUTH ELGIN	20,746	20,229	19,649	18,111	16,100	15,737	14,869	13,773	12,490	11,076	9,660
WEST DUNDEE	7,428	6,912	6,696	6,593	5,428	4,956	4,877	4,751	4,587	4,461	4,372
Southern Kane	136,733	132,051	126,851	120,940	114,730	122,207	118,301	114,449	110,697	107,533	104,318
AURORA	115,964	112,990	109,257	105,030	100,290	107,585	104,291	101,131	98,079	95,598	92,900
MONTGOMERY	7,092	5,970	4,947	3,963	3,855	5,077	4,924	4,701	4,589	4,525	4,448
NORTH AURORA	13,677	13,091	12,647	11,947	10,585	9,545	9,086	8,617	8,029	7,410	6,970
Tri-cities	85,532	83,688	81,183	77,916	73,864	72,834	70,901	69,679	68,133	66,203	63,737
BATAVIA	26,899	26,327	25,660	25,106	23,866	23,402	22,971	22,632	22,162	21,526	20,875
ELBURN	3,798	3,323	3,237	3,059	2,756	2,689	2,532	2,341	2,064	1,876	1,651
GENEVA	22,913	22,236	21,499	20,481	19,515	18,854	18,451	18,134	17,796	17,325	16,578
ST CHARLES	31,922	31,802	30,787	29,270	27,727	27,889	26,947	26,572	26,111	25,476	24,633

* US 2000 Decennial Census

Source: US Census Bureau

Population Estimates, Kane County and Regions, % Change

	2004	2003	2000*	1994	2000 to 2004 Change	1994 to 2004 % Change
Kane County	472,482	457,122	404,119	349,361	17%	35%
Northern Kane	163,449	157,977	142,502	116,757	15%	40%
ALGONQUIN	6,207	6,066	5,022	2,203	24%	182%
BARRINGTON HILLS	123	119	97	135	27%	-9%
BURLINGTON	486	477	452	430	8%	13%
CARPENTERSVILLE	35,980	34,815	30,586	23,397	18%	54%
EAST DUNDEE	3,145	3,136	2,948	2,690	7%	17%
ELGIN	77,356	76,507	74,013	66,920	5%	16%
GILBERTS	4,269	2,784	1,279	1,244	234%	243%
HAMPSHIRE	3,871	3,093	2,900	2,099	33%	84%
PINGREE GROVE	132	132	124	91	6%	45%
SLEEPY HOLLOW	3,706	3,707	3,553	3,516	4%	5%
SOUTH ELGIN	20,746	20,229	16,100	9,660	29%	115%
WEST DUNDEE	7,428	6,912	5,428	4,372	37%	70%
Southern Kane	136,733	132,051	114,730	104,318	19%	31%
AURORA	115,964	112,990	100,290	92,900	16%	25%
MONTGOMERY	7,092	5,970	3,855	4,448	84%	59%
NORTH AURORA	13,677	13,091	10,585	6,970	29%	96%
Tri-cities	85,532	83,688	73,864	63,737	16%	34%
BATAVIA	26,899	26,327	23,866	20,875	13%	29%
ELBURN	3,798	3,323	2,756	1,651	38%	130%
GENEVA	22,913	22,236	19,515	16,578	17%	38%
ST CHARLES	31,922	31,802	27,727	24,633	15%	30%

* US 2000 Decennial Census
Source: US Census Bureau

NATALITY DATA, REGIONAL KANE COUNTY, 1998 TO 2002

Source: IDPH Center for Health Statistics

Northern Kane (NK) includes: Algonquin, Barrington Hills, Burlington, Carpentersville, East Dundee, Elgin, Gilberts, Hampshire, Pingree Grove, Sleepy Hollow, South Elgin, West Dundee

Tri-cities includes (TC): Batavia, Elburn, Geneva and St Charles

Southern Kane (SK) County includes: Aurora, Montgomery and North Aurora

LIVE BIRTHS

Year	Category	North Count	Tri-cities Count	South Count	Other Count	Kane Count	Kane Rate	IL Count	IL Rate
2003	Total	3,548	1,168	3,036	645	8,397	N/A	182,393	N/A
2002	Total	3,520	1,123	3,009	647	8,299	N/A	180,555	N/A
2001	Total	3,508	1,063	2,925	558	8,054	N/A	184,022	N/A
2000	Total	3,365	1,053	2,882	544	7,844	N/A	185,003	N/A
1999	Total	3,084	1,009	2,685	581	7,359	N/A	182,027	N/A
1998	Total	3,042	1,022	2,558	562	7,184	N/A	182,503	N/A
2002	Asian/PI	162	32	53	27	274	3.3	8,364	4.6
2001	Asian/PI	132	24	49	22	227	2.8	8,121	4.4
2000	Asian/PI	123	25	47	20	215	2.7	8,041	4.3
1999	Asian/PI	100	21	34	15	170	2.3	7,341	4.0
1998	Asian/PI	79	15	30	14	138	1.9	6,624	3.6
2002	Black	210	27	275	9	521	6.3	31,793	17.6
2001	Black	186	14	286	7	493	6.1	33,162	18.0
2000	Black	179	16	300	9	504	6.4	34,268	18.5
1999	Black	160	14	266	15	455	6.2	34,200	18.8
1998	Black	192	15	279	14	500	7.0	35,655	19.5
2002	White	3,139	1,064	2,678	610	7,491	90.3	139,896	77.5
2001	White	3,185	1,023	2,587	528	7,323	90.9	142,277	77.3
2000	White	3,056	1,011	2,532	515	7,114	90.7	142,313	76.9
1999	White	2,821	974	2,383	551	6,729	91.4	140,194	77.0
1998	White	2,764	992	2,246	534	6,536	91.0	139,897	76.7

Almost 80% of all births in KC are to residents in the North and South.

Number of births steadily increased over the years

PERCENT MOTHERS BEGINNING PRENATAL CARE IN 1ST TRIMESTER

Year	Category	North	Tri-cities	South	Kane	IL	US	HP2010	
2002	Total	76.6	91.0	77.1	79.9	82.8	83.7	90.0	<i>KC rate has increased but is still lower than IL and US TC made the HP 2010 goal for the 1st time in 2002 SK has steadily increased</i>
2001	Total	76.7	88.7	77.6	79.6	81.9	83.4	90.0	
2000	Total	75.0	87.4	73.1	77.2	80.7	83.2	90.0	
1999	Total	78.6	88.0	67.2	76.4	80.8	83.2	90.0	
1998	Total	76.3	86.1	65.2	74.5	81.2	82.8	90.0	

PERCENT BIRTHS TO TEENS (17 and Under)

Year	Category	North	Tri-cities	South	Kane	IL	US	HP2010	
2002	Total	3.6	0.8	4.2	3.1	3.5	3.6	N/A	<i>KC slightly lower than IL and US. TC very low and decreasing. South is decreasing North is fairly constant</i>
2001	Total	3.1	0.8	4.7	3.2	3.8	3.8	N/A	
2000	Total	3.6	1.3	4.8	3.5	4.1	4.1	N/A	
1999	Total	4.5	1.1	5.6	4.1	4.3	4.4	N/A	
1998	Total	3.9	1.4	5.5	3.9	4.8	4.6	N/A	

PERCENT MOTHERS WHO SMOKE DURING PREGNANCY

Year	Category	North	Tri-cities	South	Kane	IL	US	HP2010	
2002	Total	5.7	4.5	5.0	5.2	10.0	11.4	1.0	<i>KC rates are markedly lower than IL and US and steadily declining</i>
2001	Total	5.5	5.1	4.6	5.3	10.5	12.0	1.0	
2000	Total	6.8	4.5	5.2	5.8	10.9	12.2	1.0	
1999	Total	7.5	4.8	6.0	6.5	11.5	12.3	1.0	
1998	Total	9.1	7.6	7.7	8.3	12.0	12.9	1.0	

PERCENT LOW BIRTH WEIGHT (less than 2,500g)

Year	Category	North	Tri-cities	South	Kane	IL	US	HP2010	
2002	LB Total	7.3	7.3	6.9	7.2	8.2	7.8	5.0	<i>Somewhat similar across the board and increasing, although lower than IL and US. However, the rates in NK and TC increased 24% between 1998 and 2002</i>
2001	LB Total	6.4	6.6	6.8	6.5	8.0	7.7	5.0	
2000	LB Total	6.3	6.6	6.9	6.6	8.0	7.6	5.0	
1999	LB Total	7.4	6.3	6.5	6.9	8.0	7.6	5.0	
1998	LB Total	5.9	5.3	6.6	6.1	8.0	7.6	5.0	

PERCENT VERY LOW BIRTH WEIGHT (less than 1,500g)

Year	Category	North	Tri-cities	South	Kane	IL	US	HP2010	
2002	VLB Total	1.6	1.0	1.7	1.6	1.7	1.5	0.9	<i>Increasing especially in NK and SK. Rates higher than US and HP2010</i>
2001	VLB Total	1.0	1.5	1.4	1.3	1.6	1.4	0.9	
2000	VLB Total	1.0	1.2	1.9	1.4	1.7	1.4	0.9	
1999	VLB Total	1.8	1.1	1.0	1.4	1.7	1.5	0.9	
1998	VLB Total	0.9	1.2	1.1	1.2	1.6	1.4	0.9	

LOW BIRTHWEIGHT BY RACE/ETHNICITY (%)

COMMUNITY	2002		2001		2000		1999		1998		1997		
	LBW	PCT	LBW	PCT	LBW	PCT	LBW	PCT	LBW	PCT	LBW	PCT	
Illinois	14,769	8.2	14,773	8.0	14,747	8.0	14,628	8.0	14,626	8.0	14,346	7.9	<i>Racial disparities exist in LBW. African Americans had the highest overall rate of LBW at 14%. The Hispanic rate was similar to White rate. The highest LBW seemed to be in Elgin at 7.5%</i>
White	9,458	6.8	9,474	6.7	9,195	6.5	9,134	6.5	8,979	6.4	8,837	6.4	
Black	4,558	14.3	4,566	13.8	4,832	14.1	4,875	14.3	5,072	14.2	4,970	14.0	
Hispanic	2,538	6.2	2,700	6.6	2,432	6.2	2,367	6.4	2,191	6.3	2,063	6.2	
Kane County	600	7.2	527	6.5	516	6.6	510	6.9	441	6.1	441	6.3	
White	494	6.6	447	6.1	432	6.1	429	6.4	378	5.8	368	5.8	
Black	74	14.2	57	11.6	61	12.1	64	14.1	55	11.0	60	12.3	
Hispanic	222	6.5	194	5.7	196	6.2	189	6.7	152	6.0	135	5.8	
Aurora	182	6.8	186	7.1	180	7.0	167	6.8	153	6.7	152	6.6	
White	147	6.2	141	6.1	147	6.5	127	5.9	120	6.0	117	5.9	
Black	32	12.5	40	14.9	28	9.9	36	14.1	31	11.6	34	12.7	
Hispanic	105	6.3	93	5.6	100	6.5	80	5.7	79	6.3	62	5.1	
Carpentersville	65	7.3	43	5.3	51	6.4	52	6.9	46	6.9	51	8.2	
White	53	6.7	38	5.2	44	6.0	44	6.2	40	6.8	42	7.5	
Black	8	14.8	*	*	7	14.0	5	15.2	6	10.9	8	14.5	
Hispanic	25	5.2	25	5.6	24	5.7	24	5.9	19	6.4	20	6.9	
Elgin	131	7.5	128	7.0	115	6.4	125	7.9	97	5.9	98	6.3	
White	98	6.3	110	6.7	88	5.5	103	7.2	81	5.5	87	6.3	
Black	24	17.8	13	10.3	19	16.0	19	16.2	14	10.6	9	7.3	
Hispanic	71	7.0	58	5.7	57	5.9	69	8.6	39	4.9	43	6.3	
St Charles	30	7.0	39	8.6	33	8.3	27	7.6	22	5.9	30	7.9	
White	27	6.5	38	8.7	33	8.6	27	8.0	21	5.8	29	7.8	
Black	*	*	*	*	0	0.0	0	0.0	*	*	*	*	
Hispanic	9	15.3	5	10.0	*	*	*	*	*	*	*	*	

VERY LOW BIRTHWEIGHT BY RACE/ETHNICITY (%)

	2002		2001		2000		1999		1998		1997	
	VERY LBW	VLBW PCT	VERY LBW	VLBW PCT	VERY LBW	VLBW PCT	VERY LBW	VLBW PCT	VERY LBW	VLBW PCT	VERY LBW	VLBW PCT
Illinois	3,019	1.7	2,875	1.6	3,067	1.7	3,072	1.7	2,934	1.6	2,921	1.6
White	1,773	1.3	1,740	1.2	1,770	1.2	1,734	1.2	1,682	1.2	1,692	1.2
Black	1,122	3.5	1,031	3.1	1,197	3.5	1,223	3.6	1,164	3.3	1,136	3.2
Hispanic	503	1.2	463	1.1	481	1.2	519	1.4	413	1.2	406	1.2
Kane County	135	1.6	103	1.3	113	1.4	104	1.4	83	1.2	91	1.3
White	108	1.4	89	1.2	95	1.3	81	1.2	71	1.1	68	1.1
Black	24	4.6	8	1.6	14	2.8	20	4.4	10	2.0	19	3.9
Hispanic	57	1.7	38	1.1	40	1.3	46	1.6	28	1.1	23	1.0
Aurora	48	1.8	37	1.4	51	2.0	25	1.0	27	1.2	39	1.7
White	38	1.6	32	1.4	44	2.0	17	0.8	21	1.0	29	1.5
Black	10	3.9	*	*	7	2.5	8	3.1	5	1.9	10	3.7
Hispanic	27	1.6	20	1.2	26	1.7	13	0.9	15	1.2	16	1.3
Carpentersville	15	1.7	5	0.6	6	0.7	15	2.0	6	0.9	7	1.1
White	12	1.5	*	*	6	0.8	11	1.5	6	1.0	5	0.9
Black	*	*	*	*	0	0.0	*	*	*	0.0	*	*
Hispanic	*	*	*	*	5	1.2	8	2.0	*	*	*	*
Elgin	31	1.8	21	1.1	13	0.7	28	1.8	18	1.1	11	0.7
White	24	1.6	18	1.1	8	0.5	20	1.4	14	1.0	7	0.5
Black	7	5.2	*	*	*	*	7	6.0	*	*	*	*
Hispanic	18	1.8	11	1.1	*	*	19	2.4	7	0.9	*	*
St Charles	6	1.4	12	2.7	9	2.3	6	1.7	*	*	*	*
White	5	1.2	12	2.7	9	2.3	6	1.8	*	*	*	*
Black	*	*	*	*	*	*	*	*	*	*	*	*
Hispanic	5	8.5	*	*	*	*	*	*	*	*	*	*

Similarly, VLBW follows a similar trend as LBW. The African American rate for KC was triple that of Whites for 2002. The rate in 2002 showed an increase in almost every category and geography except St Charles. The Kane Hispanic rate was 1.7% and has been on the increase. It was higher than the state Hispanic rate of 1.2%

INFANT MORTALITY RATE (per 1,000 live births)

Year	Category	North	Tri-cities	South	Kane	IL	US	HP2010
2002	IM Total	6.0	*	4.3	5.4	7.4	7.0	4.5
2001	IM Total	5.1	*	8.5	6.5	7.5	6.8	4.5
2000	IM Total	6.2	*	8.7	7.1	8.3	6.9	4.5
1999	IM Total	6.8	*	6	6.7	8.3	7.0	4.5
1998	IM Total	4.6	*	7.8	6.5	8.2	7.2	4.5
1997	IM Total	6.3	*	10.7	7.9	8.2	7.2	4.5
NEONATAL INFANT MORTALITY								
2002	NM Total	5.1	*	3.0	3.9	5.0	4.7	2.9
2001	NM Total	4.6	*	5.8	4.8	5.0	4.5	2.9
2000	NM Total	3.9	*	6.2	5	5.6	4.6	2.9
1999	NM Total	4.5	*	4.5	4.8	5.7	4.7	2.9
1998	NM Total	3.9	*	5.9	5	5.4	4.8	2.9
1997	NM Total	3.8	*	9.1	6	5.4	4.8	2.9
POST NEONATAL INFANT MORTALITY								
2002	PNM Total	*	*	*	1.6	2.3	2.3	1.2
2001	PNM Total	*	*	*	1.6	2.5	2.3	1.2
2000	PNM Total	*	*	*	2.2	2.7	2.3	1.2
1999	PNM Total	*	*	*	1.9	2.6	2.3	1.2
1998	PNM Total	*	*	*	1.5	2.8	2.4	1.2
1997	PNM Total	*	*	*	1.9	2.8	2.4	1.2

While other areas in Kane County saw significant decreases in IM in 2002, NK rates increased. PNNM has been steady in KC as a whole, and lower than US and IL

Prematurity, 2004 (GA <37 weeks)

COMMUNITY	Premature	
	#	%
Illinois	19,295	10.7
White	13,725	9.9
Black	4,663	15.2
Hispanic	3,646	8.6
Kane County	849	9.9
White	728	9.4
Black	85	17.2
Hispanic	292	8.0

5- Year Infant Mortality

COUNTY	Rates (per 1,000 live births)				Number of Deaths			
	98 - 02	97 - 01	96 - 00	95 -99	98 - 02	97 - 01	96 - 00	95 -99
Illinois	7.9	8.1	8.3	8.5	7,220	7,392	7,549	7,745
White	6.1	6.2	6.3	6.4	4,285	4,379	4,421	4,519
Black	16.2	16.4	16.9	17.3	2,744	2,831	2,967	3,085
Hispanic	6.4	6.7	6.8	6.7	1,239	1,231	1,211	1,129
Kane	6.4	6.9	7.3	7.5	249	259	265	263
White	5.7	6.1	6.3	6.5	201	206	207	208
Black	17.4	20.1	22.6	22.0	43	49	55	53
Hispanic	6.5	6.7	7.0	6.7	100	95	92	80
Aurora	7.4	8.5	8.2	7.7	93	104	97	89
White	6.0	6.8	6.4	6.1	67	73	66	61
Black	19.5	23.1	22.9	20.4	26	31	31	28
Hispanic	7.0	7.5	6.7	5.4	53	53	44	33
Carpentersville	6.1	6.3	6.5	5.7	24	23	22	18
White	5.9	6.0	6.1	5.6	21	20	19	16
Black	*	*	*	*	*	*	*	*
Hispanic	5.8	7.0	6.6	6.6	12	13	11	10
Elgin	6.3	5.8	7.9	9.4	54	49	65	75
White	5.2	4.8	6.4	7.7	40	36	47	55
Black	19.1	17.8	25.3	29.8	12	11	16	19
Hispanic	6.1	5.4	8.1	8.8	28	23	32	32
St Charles	8.0	7.7	6.9	5.9	16	15	13	11
White	7.7	7.9	7.2	6.2	15	15	13	11
Black	0.0	0.0	0.0	0.0	0	0	0	0
Hispanic	0.0	0.0	0.0	0.0	0	0	0	0

There was a significant racial difference in IM rates. African American IM rates were triple those of their white counterparts and have remained consistently higher than those of IL and US African Americans. The Hispanic rates have mirrored those of whites as a whole. Elgin experienced rate increases in every race category in 2002.

5- Year Post Neonatal Infant Mortality								
COUNTY	Rate per 1,000 Live Births				# of Post Neonatal Deaths			
	98 - 02	97 - 01	96 - 00	95 - 99	98 - 02	97 - 01	96 - 00	95 - 99
Illinois	2.6	2.7	2.8	2.8	2,360	2,441	2,527	2,600
White	1.8	1.9	1.9	2.0	1,262	1,318	1,352	1,400
Black	6.2	6.2	6.4	6.5	1,043	1,071	1,130	1,157
Hispanic	2.1	2.2	2.4	2.4	403	408	428	407
Kane	1.8	1.8	2.0	1.9	68	68	72	67
White	1.6	1.6	1.8	1.8	55	56	59	56
Black	4.4	4.5	4.9	4.6	11	11	12	11
Hispanic	1.7	1.9	2.2	2.1	26	27	29	25
Aurora	2.1	2.2	2.0	2.0	27	27	24	23
White	1.7	1.8	1.7	1.8	19	19	18	18
Black	*	*	*	*	*	*	*	*
Hispanic	1.9	1.7	1.7	*	14	12	11	*
Carpentersville	*	*	*	*	*	*	*	*
White	*	*	*	*	*	*	*	*
Black	*	*	*	*	*	*	*	*
Hispanic	*	*	*	*	*	*	*	*
Elgin	1.5	1.7	2.6	2.6	13	14	21	21
White	1.4	1.6	2.2	2.3	11	12	16	16
Black	*	*	*	*	*	*	*	*
Hispanic	*	*	*	*	*	*	*	*
St Charles	*	*	*	*	*	*	*	*
White	*	*	*	*	*	*	*	*
Black	0.0	0.0	0.0	0.0	0	0	0	0
Hispanic	0.0	0.0	0.0	0.0	0	0	0	0

CRUDE MORTALITY DATA, REGIONAL KANE COUNTY

Note: In 1999, a new classification of diseases (ICD10) was adopted, thus mortality rates for specific disease conditions cannot be trended beyond 1999 using ICD 10 coding. Mortality coding prior to 1999 was done using ICD9 coding

Northern Kane (NK) includes: Algonquin, Barrington Hills, Burlington, Carpentersville, East Dundee,

Elgin, Gilberts, Hampshire, Pingree Grove, Sleepy Hollow, South Elgin, West Dundee

Tri-cities includes (TC): Batavia, Elburn, Geneva and St Charles

Southern Kane (SK) County includes: Aurora, Montgomery and North Aurora

Leading Causes of Death, Kane County 2000 to 2003

	2003		2002		2001		2000		1999	
Total Population	457,122		442,010		424,547		404,119		402,622	
Total Deaths	2,587	565.9	2,571	581.7	2,474	582.7	2,501	618.9	2,393	594.4
Select Causes of Death	# of Deaths	Rate / 100,000	# of Deaths	Rate / 100,000	# of Deaths	Rate / 100,000	# of Deaths	Rate/100k	# of Deaths	Rate / 100,000
Diseases of Heart	642	140.4	607	137.3	656	154.5	655	162.1	681	169.1
{Coronary Heart Disease}	473	103.5	442	100.0	478	112.6	490	121.3	544	135.1
Malignant Neoplasms (Cancer)	640	140.0	622	140.7	605	142.5	573	141.8	551	136.9
{Bronchus & Lung Cancer}	184	40.3	176	39.8	157	37.0	138	34.1	147	36.5
{Female Breast Cancer}	56	24.7	58	26.4	58	26.1	53	26.4	49	24.3
{Colorectal Cancer}	63	13.8	69	15.6	67	15.8	50	12.4	62	15.4
Cerebrovascular Diseases (Stroke)	168	36.8	213	48.2	159	37.5	153	37.9	176	43.7
Chronic Lower respiratory Disease	122	26.7	111	25.1	108	25.4	124	30.7	111	27.6
Accidents	100	21.9	113	25.6	106	25.0	96	23.8	81	20.1
{Motor Vehicle Accidents}	43	9.4	41	9.3	49	11.5	42	10.4	34	8.4
Diabetes Mellitus	84	18.4	94	21.3	79	18.6	86	21.3	82	20.4
Nephritis,Nephrotic Syndrome &	68	14.9	56	12.7	56	13.2	49	12.1	40	9.9
Pneumonia	59	12.9	54	12.2	68	16.0	82	20.3	82	20.4
Alzheimer's Disease	52	11.4	61	13.8	42	9.9	54	13.4	50	12.4
Suicide	37	8.1	36	8.1	35	8.2	27	6.7	26	6.5
Septicemia	34	7.4	53	12.0	37	8.7	45	11.1	25	6.2
Infant Deaths (per 1,000 Live Births)	54	6.4	45	5.4	52	6.5	56	7.1	49	6.7
Source: Illinois Department of Public Health	Note: {Indented causes of death are subsets of preceding causes}									

Leading Causes of Death, Kane County 2003

	Kane		Illinois	US	% Diff	% Diff
Total Population	457,122				Vs IL	Vs US
Total Deaths	2,587	565.9	829.2	841.9	-32%	-33%
Select Causes of Death	# of Deaths	Rate / 100,000	Rate / 100,000	Rate / 100,000		
Diseases of Heart	642	140.4	234.7	235.6	-40%	-40%
{Coronary Heart Disease}	473	103.5		174.8		-41%
Malignant Neoplasms (Cancer)	640	140.0	192.9	191.5	-27%	-27%
{Bronchus & Lung Cancer}	184	40.3		54.4		-26%
{Female Breast Cancer}	56	24.7		28.2		-12%
{Colorectal Cancer}	63	13.8		19.2		-28%
Cerebrovascular Diseases (Stroke)	168	36.8	54.4	54.2	-32%	-32%
Chronic Lower respiratory Disease	122	26.7	38.3	43.5	-30%	-39%
Accidents	100	21.9	30.9	37.6	-29%	-42%
{Motor Vehicle Accidents}	43	9.4	11.8	15.4	-21%	-39%
Diabetes Mellitus	84	18.4	24.0	25.5	-24%	-28%
Nephritis,Nephrotic Syndrome &	68	14.9	18.1	14.6	-18%	2%
Influenza and Pneumonia	62	13.6	22.7	22.4	-40%	-39%
Alzheimer's Disease	52	11.4	20.7	21.8	-45%	-48%
Suicide	37	8.1	7.9	10.8	2%	-25%
Septicemia	34	7.4	16.2	11.7	-54%	-36%
Infant Deaths (per 1,000 Live Births)	54	6.4	7.6	6.9	-15%	-7%

CRUDE MORTALITY, All Races

Year	Category	North	Tricities	South	Kane Rat	IL Rate	US Rate	HP2010
2002	Total	575.0	652.8	657.5	581.7	846.5	847.3	N/A
2001	Total	570.7	648.1	647.4	580.5	840.1	848.5	N/A
2000	Total	587.4	712.1	746.1	618.9	855.8	873.1	N/A
1999	Total	621.8	686.5	667.7	589.3	891.5	877.0	N/A
1998	Total	635.0	672.8	653.4	595.2	864.0	864.7	N/A
1997	Total	674.8	588.4	687.6	613.1	860.8	864.7	N/A

CORONARY HEART DISEASE MORTALITY RATES, ICD-10

Year	Category	North	Tricities	South	Kane Rat	IL Rate	US Rate	HP2010
2002	CR Total	115.5	114.6	88.3	100.0	181.4	180.6	166.0
2001	CR Total	114.4	141.2	106.7	112.2	186.1	185.0	166.0
2000	CR Total	120.0	127.3	152.5	121.3	194.6	195.8	166.0
1999	CR Total	159.0	145.5	138.3	134.0	210.5	202.6	166.0

*Steadily declining in all regions.
Lower than IL and US and HP 2010.
Lowest in SK*

CEREBROVASCULAR DISEASES MORTALITY RATES, ICD-10

Year	Category	North	Tricities	South	Kane Rat	IL Rate	US Rate	HP2010
2002	CR Total	55.8	61.6	44.1	48.2	57.0	56.4	N/A
2001	CR Total	32.1	48.8	41.3	37.3	57.6	57.4	N/A
2000	CR Total	38.6	44.7	43.6	37.9	59.7	60.9	N/A
1999	CR Total	46.1	52.2	49.9	43.3	63.5	61.4	N/A

*11% increase for KC and 21% for NK
from 1999 to 2002. SK decreased by
12% for the same period. All areas
except TC were lower than IL US.*

CHRONIC LIVER DISEASE AND CIRRHOSIS MORTALITY RATES, ICD-10

Year	Category	North	Tricities	South	Kane Rat	IL Rate	US Rate	HP2010
2002	CR Total	N/A	N/A	9.5	6.3	8.5	9.5	N/A
2001	CR Total	9.4	14.1	9.9	9.6	8.8	9.5	N/A
2000	CR Total	10.5	N/A	10.5	8.2	8.5	9.6	N/A
1999	CR Total	N/A	N/A	N/A	6.9	9.0	9.6	N/A

*34% decrease in KC from '01 to '02.
SK rate was same as US rate but
higher than IL rate.*

SUICIDE RATES, ICD-10

Year	Category	North	Tricities	South	Kane Rat	IL Rate	US Rate	HP2010
2002	CR Total	N/A	N/A	13.4	8.1	9.1	11.0	5.0
2001	CR Total	8.0	N/A	9.1	8.2	9.1	10.8	5.0
2000	CR Total	N/A	N/A	11.3	6.7	8.1	10.7	5.0
1999	CR Total	7.4	N/A	9.8	6.5	8.3	10.7	5.0

*KC rate increased 27% from 1999 to
2002 and 37% for SK in the same
period. SK rate was higher than IL
and US.*

HOMICIDE RATES, ICD-10

Year	Category	North	Tricities	South	Kane Rat	IL Rate	US Rate	HP2010	
2002	CR Total	N/A	N/A	15.0	5.0	8.1	6.1	3.0	SK seemed most affected in this category, showing a 30% increase from '99 to '01. Its '02 rate was 5x higher than HP 2010 goal.
2001	CR Total	N/A	N/A	N/A	4.5	8.5	7.1	3.0	
2000	CR Total	N/A	N/A	13.1	4.7	7.9	6.1	3.0	
1999	CR Total	8.2	N/A	11.5	6.6	8.3	6.2	3.0	

MOTOR VEHICLE ACCIDENTS MORTALITY RATES, ICD-10

Year	Category	North	Tricities	South	Kane Rat	IL Rate	US Rate	HP2010	
2002	CR Total	6.5	N/A	11.8	9.3	12.5	15.7	9.2	Although SK saw a decrease from '01 to '02 its '02 rate was 44% higher than its '99 rate. It was still lower than
2001	CR Total	10.7	N/A	14.1	11.5	12.5	15.4	9.2	
2000	CR Total	9.8	N/A	12.2	10.4	12.1	15.7	9.2	
1999	CR Total	10.4	N/A	8.2	8.4	12.5	15.5	9.2	

COLORECTAL CANCER MORTALITY RATES, ICD-10

Year	Category	North	Tricities	South	Kane Rat	IL Rate	US Rate	HP2010	
2002	CR Total	16.9	18.5	11.0	15.6		19.7	N/A	While all other areas showed a downward trend TC has consistently increased (35% increase from '99 to
2001	CR Total	14.1	15.4	19.0	15.7	21.8	20	N/A	
2000	CR Total	13.3	14.9	11.3	12.4	22.5	20.9	N/A	
1999	CR Total	18.6	13.7	13.9	15.3	22.7	21	N/A	

LUNG CANCER MORTALITY RATES, ICD-10

Year	Category	North	Tricities	South	Kane Rat	IL Rate	US Rate	HP2010	
2002	CR Total	38.3	49.3	41.0	39.8		54.7	44.9	As with other cancer categories, TC rates remain the highest in KC, increasing by 38% from '99 to '01. NK and KC showed more moderate increases (7% and 10% respectively), while SK decreased
2001	CR Total	36.8	34.7	39.7	36.8	54.2	54.8	44.9	
2000	CR Total	33.7	44.7	30.5	34.1	54.9	56.5	44.9	
1999	CR Total	35.7	35.7	42.6	36.2	55.3	55.8	44.9	

BREAST CANCER (FEMALE) MORTALITY RATES, ICD-10*

Year	Category	North #	Tricities #	South #	Kane #(Rate)	IL Rate	US Rate	HP2010
2002	CR Total	27	6	20	58(26.4)		28.3	22.3
2001	CR Total	18	11	20	58(26.1)	28.8	28.6	22.3
2000	CR Total	22	6	18	53(26.4)	32.2	29.8	22.3
1999	CR Total	17	13	15	49	32.2	29.5	22.3

KC rates have remained fairly constant for female breast cancer. Although the 2002 rate was lower than the US rate, it was higher than HP 2010 goal of 22.3

Source: Illinois Dept. of Public Health Center for Health Statistics

	Motor Vehicle	Other	Total
Under 1	0	<5	<5
1-4 Years	0	0	0
5 - 14 Years	<5	<5	<10
15 - 24 Years	17	8	25
25 - 34 Years	<5	7	<10
35 - 44 Years	6	8	14
45 - 54 Years	5	11	16
55 - 64 Years	<5	5	<10
65 and Older	6	30	36
Total	41	72	113

Mortality Rate for Kane County, 1990 to 2003

	Rate per 100,000
1990	682.0
1991	665.6
1992	674.3
1993	650.2
1994	679.2
1995	647.0
1996	669.8
1997	611.3
1998	598.4
1999	594.4
2000	618.9
2001	582.7
2002	581.7
2003	565.9

MORBIDITY DATA, KANE COUNTY REGIONS, 1997 TO 2001

(Rates are per 100,000 unless otherwise stated)

Northern Kane (NK) includes: Algonquin, Barrington Hills, Burlington, Carpentersville, East Dundee, Elgin, Gilberts, Hampshire, Pingree Grove, Sleepy Hollow, South Elgin, West Dundee

Tri-cities includes (TC): Batavia, Elburn, Geneva and St Charles

Southern Kane (SK) County includes: Aurora, Montgomery and North Aurora

Note: Due to the fact that most hospitalization data are derived from Hospital Discharge Data which do not typically collect data by "County of Residence", it is not a very reliable source of county or community morbidity data especially in communities that straddle more than one county. Source: Illinois Department of Public Health

DIABETES HOSPITALIZATION RATES

Year	Category	North	Tri-cities	South	Kane	IL Rate	US Rate	HP 2010
2001	Total	153.2	137.3	176.1	130	174.2	161.4	N/A
2000	Total	121.4	143.5	231.0	139.1	164	155.7	N/A
1999	Total	120.3	76.9	124.4	96.8	116.2	154.4	N/A
1998	Total	153.2	107.2	175.0	128.2	155.9	151.6	N/A
1997	Total	75.9	104.8	88.2	137.4	154.5	143.6	N/A

SK seemed to have higher rates than the US average, followed by NK

NON-FATAL HEAD/SPINAL CORD INJURY HOSPITALIZATION RATES

Year	Category	North	Tri-cities	South	Kane	IL Rate	US Rate	HP 2010
2001	Head	57.5	68.0	62.8	53.0	65.9	N/A	45
2000	Head	61.8	63.6	73.2	58.2	63.8		45
1999	Head	54.2	53.5	65.5	49.5	61.2	N/A	45
1998	Head	73.2	70.5	76.9	62.5	64.6	N/A	45
1997	Head	42.3	57.4	26.2	57.0	74.8	N/A	45
2001	Spinal Cord	N/A	N/A	N/A	2.8	3.8	N/A	2.4
2000	Spinal Cord	N/A	N/A	N/A	4.0	3.8	N/A	2.4
1999	Spinal Cord	N/A	N/A	13.1	6.9	3.8	N/A	2.4
1998	Spinal Cord	8.4	N/A	N/A	5.8	4.4	N/A	2.4
1997	Spinal Cord	N/A	N/A	N/A	7.1	5.0	N/A	2.4

Head injuries in KC for all regions were higher than the HP 2010 objective, although they seemed stable over the years. TC had the highest of the three regions

NON-FATAL HIP INJURY HOSPITALIZATION

Year	Category	Kane Count	Kane Rate	IL Count	IL Rate
2001	Hip	303	875.0	10985	734.8
2000	Hip	295	868.1	10852	723.5
1999	Hip	304	904.0	11335	757.6
1998	Hip	320	965.3	11252	752.2
1997	Hip	277	855.7	11332	765.0

Kane County showed consistently higher rates for hip injuries than IL for the 5 years

TOTAL PSYCHOSES HOSPITALIZATION

Year	Category	Kane Count	Kane Rate	IL Count	IL Rate
2001	Ages 15-44	1593	817.4	53526	N/A
2000	Ages 15-44	1441	779.2	50769	916.3
1999	Ages 15-44	1365	N/A	48092	N/A
1998	Ages 15-44	1290	N/A	48596	N/A
1997	Ages 15-44	1354	N/A	46037	N/A
2001	Ages 45-64	480	386.2	23672	N/A
2000	Ages 45-64	489	593.8	21341	800.1
1999	Ages 45-64	442	N/A	19493	N/A
1998	Ages 45-64	405	N/A	18274	N/A
1997	Ages 45-64	402	N/A	16353	N/A

Hospitalization for total psychoses increased over the last five years. The increase was about 18% among the younger population and 19% in the older population. The rates for both age groups were lower than IL rates

ALCOHOL DEPENDENCE SYNDROME HOSPITALIZATION

Year	Category	Kane Count	Kane Rate	IL Count	IL Rate
2001	Ages 15-44	70	35.9	3120	N/A
2000	Ages 15-44	88	47.6	3197	57.7
1999	Ages 15-44	93	N/A	3683	N/A
1998	Ages 15-44	115	N/A	4227	N/A
1997	Ages 15-44	120	N/A	4453	N/A
2001	Ages 45-64	47	37.8	2006	N/A
2000	Ages 45-64	44	53.4	1947	73.0
1999	Ages 45-64	50	N/A	2001	N/A
1998	Ages 45-64	49	N/A	2079	N/A
1997	Ages 45-64	61	N/A	2129	N/A

Alcohol dependence syndrome hospitalization seemed to have dropped over the last five years for both age groups in KC, with its rates lower than IL average.

SENTINEL EVENTS

Year	Category	Kane Count	IL Count
2001	Asthma (1-14)	176	6,599
2000	Asthma (1-14)	197	8,728
1999	Asthma (1-14)	168	6,657
1998	Asthma (1-14)	192	7,642
1997	Asthma (1-14)	272	10,866
2001	Dehydration (0-1)	42	958
2000	Dehydration (0-1)	44	1,581
1999	Dehydration (0-1)	32	876
1998	Dehydration (0-1)	55	1,308
1997	Dehydration (0-1)	71	1,734
2001	Hypertension (>=18)	261	13,469
2000	Hypertension (>=18)	242	12,750
1999	Hypertension (>=18)	120	7,641
1998	Hypertension (>=18)	114	7,637
1997	Hypertension (>=18)	119	7,797

Sentinel Events are disease conditions which when present indicates that the community lacks access to primary care. Despite the growth countywide in this age group, hospitalization for asthma and infant dehydration have been decreasing. However, hospitalization for uncontrolled hypertension has more than doubled in the population 18 and older. This is a sentinel event for lack of access to primary care especially in the adult population.

Asthma Hospitalization rates for 2001, Kane County

	Number	Pop	Rate
Age group			per 100k
0 to 4	84	35,249	238.3
5 to 14	76	67,607	112.4
15 to 24	37	56,049	66.0
25 to 34	55	60,815	90.4
35 to 44	67	68,064	98.4
45 to 54	60	53,180	112.8
55 to 64	52	29,174	178.2
65 to 74	29	17,871	162.3
75 +	28	16,110	173.8
Total	488	404,119	120.8

Hospitalization for asthma is still higher for the very young and the elderly in Kane County, consistent with national norms.

**Based on Census 2000 Population*

Kane County Hospitalization Rates

Category	2001			2000			1999			HP 2010
	Count	Rate	State Rate	Count	Rate	State Rate	Count	Rate	State Rate	
Diabetes	554	130.0	174.2	562	139.1	174.2	393	96.8	174.2	N/A
Childhood Asthma (ages 1-14)	176	183.4	N/A	197	205.3	N/A	168	222.8	N/A	N/A
Uncontrolled Hypertension (18+)	261	92.6	N/A	242	85.9	N/A	120	53.8	N/A	N/A
Non-Fatal Head Injury	226	53.0	65.9	235	58.2	63.8	201	49.5	61.2	45
Non-Fatal Hip Injury	303	875.0	734.8	295	868.1	723.5	304	904.0	757.6	N/A
Non-Fatal Spine Injury	12	2.8	3.8	16	4.0	3.8	28	6.9	3.8	2.4

Diabetes hospitalization rate increased 34% from 1999 to 2001, although these rates have been consistently lower than IL rates.

Note: Rates are per 100,000 of total population. Hip injury rates are per 100,000 of population over 65

Note: 1990 and 2000 Census population data used to calculate rates

Source: IPLAN Data Systems

Communicable Diseases, 2000 to 2004

Salmonellosis

Year	North		Tricities		South		Kane		
	Number	Rate	Number	Rate	Number	Rate	Number	Rate	
2000 -2004	108	14.2	80	20.0	127	20.3	328	15.0	<i>The rates were highest in the Tri-cities, perhaps due to better access to care. There was an unusual hike in the rate for SK in 2004 due to a Salmonella outbreak.</i>
2004	24	15.2	17	20.3	66	50.0	114	24.9	
2003	23	14.6	20	23.9	17	12.9	63	13.8	
2002	18	11.7	17	20.9	19	15.0	56	12.7	
2001	15	10.0	10	12.8	11	9.1	37	8.7	
2000	28	19.6	16	21.7	14	12.2	58	14.4	

Giardiasis

Year	North		Tricities		South		Kane		
	Number	Rate	Number	Rate	Number	Rate	Number	Rate	
2000 -2004	54	7.1	68	17.0	59	9.4	187	8.6	<i>As with Salmonellosis, TC were consistently higher than NK and SK, double the Kane rate. However, the rates did not seem to be increasing.</i>
2004	8	5.1	15	17.9	9	6.8	32	7.0	
2003	16	10.1	17	20.3	13	9.8	47	10.3	
2002	9	5.8	8	9.9	7	5.5	24	5.4	
2001	16	10.7	11	14.1	15	12.4	46	10.8	
2000	5	3.5	17	23.0	15	13.1	38	9.4	

Hepatitis A (Acute)

Year	North		Tricities		South		Kane		
	Number	Rate	Number	Rate	Number	Rate	Number	Rate	
2000 -2004	35	4.6	6	1.5	<40	6.2	<85	3.7	<i>The rates for Hep A seemed to be on the decline in the last two years. SK average rate was almost 2x Kane rate</i>
2004	<5	n/a	0		<5	n/a	<5	n/a	
2003	<5	n/a	0		7	5.3	11	2.4	
2002	10	6.5	<5	n/a	18	14.2	30	6.8	
2001	10	6.7	<5	n/a	7	5.8	18	4.2	
2000	10	7.0	<5	n/a	6	5.2	20	4.9	

Hepatitis B (Acute)

Year	North		Tricities		South		Kane		
	Number	Rate	Number	Rate	Number	Rate	Number	Rate	
2000 -2004	13	1.7	<5	n/a	20	3.2	<40	1.6	<i>Sk showed the highest rates for Hep B, accounting for more than 50% of Kane cases for 2000 to 2004.</i>
2004	<5	n/a	<5	n/a	6	4.5	9	2.0	
2003	<5	n/a	<5	n/a	7	5.3	10	2.2	
2002	<5	n/a	<5	n/a	<5	n/a	5	1.1	
2001	<5	n/a	<5	n/a	5	4.1	10	2.4	
2000	<5	n/a	0	0.0	<5	n/a	<5	n/a	

Invasive Strep pneumoniae

Year	North		Tricities		South		Kane		
	Number	Rate	Number	Rate	Number	Rate	Number	Rate	
2000 -2004	<40	5.1	<30	6.0	<45	6.9	<115	5.0	<i>Although the rate for SK seemed to be the highest it showed a 43% drop from 2003, similar to NK</i>
2004	7	4.4	6	7.2	9	6.8	23	5.0	
2003	13	8.2	<5	n/a	16	12.1	32	7.0	
2002	16	10.4	7	8.6	11	8.7	34	7.7	
2001	<5	n/a	8	10.3	5	4.1	18	4.2	
2000	0	0.0	0	0.0	<5	n/a	<5	n/a	

Note: Since population estimates for 2004 are not yet available, 2003 estimates were used to estimate 2004 population for CD only

Tuberculosis

Category	2001			2000			1999			HP 2010
	Count	Rate	State Rate	Count	Rate	State Rate	Count	Rate	State Rate	
Tuberculosis, Incidence	7	1.7	5.6	20	4.9	5.9	17	4.2	6.7	N/A

Tuberculosis incidence seemed to be on the decline from 4.2 per 100,000 in 1999 to 1.7 in 2001.

Source: IDPH

Cancer Incidence Data 1998-2002

Race	Sites	Male Count	Male Rate	Male Lower CI	Male Upper CI	Female Count	Female Rate	Female Lower CI	Female Upper CI
1 All	01 Oral Cavity & Pharynx	101	13.2	10.6	16.3	74	8.6	6.7	10.9
1 All	02 Esophagus	55	8.2	6.1	11	21	2.5	1.6	3.9
1 All	03 Stomach	61	8.8	6.7	11.6	41	4.7	3.4	6.4
1 All	04 Colon & Rectum	426	68.2	61.6	75.5	428	49.5	44.9	54.5
1 All	05 Liver	46	7.1	5.1	9.7	17	1.9	1.1	3
1 All	06 Pancreas	69	10.5	8.1	13.6	72	8.4	6.6	10.7
1 All	07 Lung & Bronchus	539	86.8	79.4	94.9	435	52.8	47.9	58
1 All	08 Bone	12	1.1	0.6	2.4	5	0.6	0.2	1.4
1 All	09 Melanomas, Skin	124	15.4	12.6	18.7	109	11.6	9.5	14
1 All	10 Breast, invasive	9	1.3	0.6	2.8	1199	135.9	128.2	143.9
1 All	11 Cervix	0	0	0	1	83	8.5	6.8	10.7
1 All	12 Corpus & Uterus	0	0	0	1	220	25.1	21.9	28.8
1 All	13 Ovary	0	0	0	1	135	15.2	12.7	18.1
1 All	14 Prostate	1012	156.5	146.7	167	0	0	0	0.5
1 All	15 Testis	58	5.3	4	7.2	0	0	0	0.5
1 All	16 Bladder	244	39.8	34.8	45.4	100	11.6	9.4	14.1
1 All	17 Kidney	137	19.5	16.2	23.4	77	8.8	6.9	11
1 All	18 Brain & Nervous System	55	6.9	5.1	9.4	56	6	4.5	7.8
1 All	19 Hodgkins Lymphoma	26	2.8	1.8	4.4	36	3.6	2.5	5.1
1 All	20 Non-Hodgkins	153	22.2	18.6	26.4	139	15.8	13.3	18.7
1 All	21 Multiple Myeloma	37	5.8	4	8.2	42	4.8	3.5	6.6
1 All	22 Leukemia	121	17.5	14.3	21.3	94	10.3	8.3	12.7
1 All	23 All Other Sites	296	43	38	48.7	376	41.9	37.7	46.4
1 All	99 All Cancers Combined	3581	539.9	521.6	558.9	3759	428.2	414.4	442.2
Race	Sites	Male Count	Male Rate	Male Lower CI	Male Upper CI	Female Count	Female Rate	Female Lower CI	Female Upper CI
2 Whites	01 Oral Cavity & Pharynx	84	11.8	9.3	14.9	66	8.2	6.3	10.4
2 Whites	02 Esophagus	51	8.1	5.9	10.9	21	2.7	1.6	4.1
2 Whites	03 Stomach	55	8.5	6.3	11.3	36	4.4	3.1	6.1
2 Whites	04 Colon & Rectum	399	67.4	60.7	74.8	396	47.9	43.3	53
2 Whites	05 Liver	39	6.3	4.4	8.9	14	1.6	0.9	2.8
2 Whites	06 Pancreas	64	10.3	7.9	13.4	62	7.6	5.8	9.8

2 Whites	07 Lung & Bronchus	493	83.9	76.4	92	409	52.3	47.3	57.6
2 Whites	08 Bone	11	1.2	0.6	2.5	3	0.4	0.1	1.2
2 Whites	09 Melanomas, Skin	113	14.9	12.2	18.3	93	10.6	8.5	13
2 Whites	10 Breast, invasive	9	1.4	0.6	2.9	1096	132.3	124.5	140.5
2 Whites	11 Cervix	0	0	0	1.1	75	8.4	6.6	10.6
2 Whites	12 Corpus & Uterus	0	0	0	1.1	191	23.3	20.1	26.9
2 Whites	13 Ovary	0	0	0	1.1	122	14.7	12.2	17.6
2 Whites	14 Prostate	932	152.1	142.2	162.6	0	0	0	0.5
2 Whites	15 Testis	52	5.2	3.9	7.1	0	0	0	0.5
2 Whites	16 Bladder	231	39.6	34.5	45.4	89	10.7	8.6	13.3
2 Whites	17 Kidney	129	19.5	16.2	23.5	73	8.8	6.9	11.1
2 Whites	18 Brain & Nervous System	53	7.1	5.2	9.6	50	5.8	4.3	7.7
2 Whites	19 Hodgkins Lymphoma	22	2.5	1.6	4.2	32	3.5	2.4	5
2 Whites	20 Non-Hodgkins	145	22.2	18.5	26.5	128	15.5	12.9	18.4
2 Whites	21 Multiple Myeloma	33	5.5	3.7	8	38	4.6	3.2	6.3
2 Whites	22 Leukemia	113	17.3	14.1	21.2	89	10.3	8.3	12.8
2 Whites	23 All Other Sites	268	41.3	36.3	47	353	41.8	37.5	46.5
2 Whites	99 All Cancers Combined	3296	526.1	507.5	545.3	3436	415.5	401.6	429.8

Race	Sites	Male Count	Male Rate	Male Lower CI	Male Upper CI	Female Count	Female Rate	Female Lower CI	Female Upper CI
3 Blacks	01 Oral Cavity & Pharynx	8	26	10	81.7	2	5.1	0.5	27.8
3 Blacks	02 Esophagus	2	9.2	0.8	63.9	0	0	0	21.1
3 Blacks	03 Stomach	5	13	3.8	65.5	3	11.8	2.2	39.5
3 Blacks	04 Colon & Rectum	14	54.7	27.2	118.1	21	75.8	44.9	122.3
3 Blacks	05 Liver	4	20.8	5	78.7	1	3.3	0.1	25.8
3 Blacks	06 Pancreas	3	12.1	1.8	67	6	18.4	6.4	46.5
3 Blacks	07 Lung & Bronchus	37	173.1	113	266.4	21	80.6	47.9	128.9
3 Blacks	08 Bone	1	1	0	53.6	1	1	0	21.9
3 Blacks	09 Melanomas, Skin	0	0	0	53	0	0	0	21.1
3 Blacks	10 Breast, invasive	0	0	0	53	50	126.7	90.9	175.7
3 Blacks	11 Cervix	0	0	0	53	5	7.5	2.4	29.1
3 Blacks	12 Corpus & Uterus	0	0	0	53	12	33.2	15.6	66.1
3 Blacks	13 Ovary	0	0	0	53	6	20	6.3	50.6
3 Blacks	14 Prostate	44	179.3	120.8	270	0	0	0	21.1
3 Blacks	15 Testis	1	1.5	0	54	0	0	0	21.1
3 Blacks	16 Bladder	2	6.7	0.7	59.5	6	20.4	6.9	50.5

3 Blacks	17 Kidney	5	22	5.1	81.2	2	5.5	0.7	28.3
3 Blacks	18 Brain & Nervous System	2	5.3	0.3	58.2	3	4.5	0.9	25.8
3 Blacks	19 Hodgkins Lymphoma	2	3	0.4	55.1	2	2.7	0.3	23.7
3 Blacks	20 Non-Hodgkins	5	10.6	3.4	62.2	2	4.3	0.3	26.7
3 Blacks	21 Multiple Myeloma	4	13.9	2.8	68.6	2	9	1	36.1
3 Blacks	22 Leukemia	5	24.4	5.8	85.3	2	6.4	0.5	31
3 Blacks	23 All Other Sites	11	49.8	19.7	118.9	15	44.5	23.1	81
3 Blacks	99 All Cancers Combined	155	626.4	512.6	769.2	162	480.6	401.8	572.8

Sentinel Events, Cancer

In-Situ Breast Cancer

Year	Kane Rate	Kane Count	IL Rate	IL Count	US Rate
96-2000	27.0	224	26.3	8243	30.4
95-99	23.3	189	24.2	7521	28.9
94-98	20.8	164	22.3	6856	26.8
93-97	18.5	141	20.2	6118	24.4
92-96	17.6	130	18.8	5644	23

Late Cervical Cancer

Year	Kane Rate	Kane Count	IL Rate	IL Count	US Rate
96-2000	3.8	35	4.5	1432	3.4
95-99	3.8	34	4.6	1435	3.4
94-98	4.6	39	4.6	1421	3.6
93-97	5.1	41	4.6	1407	3.6
92-96	5.5	43	4.5	1374	3.7

Note: Rates are age adjusted

Incidence of Female in situ Breast Cancer, Kane County 5-Year Aggregates

	Number	Rate	<i>Incidence of insitu female breast cancer has been on a steady increase in the years studied. It has almost doubled (95% increase) between 1989-1993 and 1999 - 2003</i>
1999 - 2003	277	30.4	
1994 -1998	165	20.9	
1989 - 1993	108	15.6	

Source: Illinois State Cancer Registry

Note: Rates are age adjusted

Invasive Breast Cancer Statistics, 1999-2003

	Male	Male	Female	Female
	Count	Rate	Count	Rate
1 All Races	12	1.9	1,204	131.8
2 Whites	12	2	1,112	129.8
3 Blacks	0	0	43	103.7

Kane County Cumulative HIV/AIDS Cases Reported 2000 - 2004

Report Year	HIV	AIDS
2004	32	28
2003	25	24
2002	45	36
2001	23	20
2000	32	47
Total	157	155

While the number of HIV cases reported has stabilized since its high in 2002, AIDS cases seemed to have dropped about 40% from its high in 2000

By Sex

Report Year	HIV		AIDS	
	Female	Male	Female	Male
2004	8	24	7	21
2003	11	14	<5	21
2002	14	31	8	28
2001	6	17	5	15
2000	10	22	9	38
Total	49	108	<34	123

While reported AIDS cases were about three times as many among men than among women, the ratio for HIV was lower at approx. 2:1

By Race/Ethnicity

Report Year	HIV				AIDS			
	Black Non-Hispanic	Hispanic	White Non-Hispanic	Other/Unk	Black Non-Hispanic	Hispanic	White Non-Hispanic	Other/Unk
2004	15	6	9	2	5	6	13	<5
2003	10	5	6	4	<5	7	12	<5
2002	12	8	20	5	11	8	17	0
2001	6	7	10	0	5	6	8	<5
2000	6	11	15	0	10	21	16	0
Total	49	37	60	11	<36	48	66	<15

While other ethnic groups are seeing decreases in reported HIV cases, Black Non-Hispanic group saw their cases almost triple from 2000 to 2004. AIDS reported cases actually decreased for the same group by 50% while the decrease among non-Hispanic whites was not that significant. Hispanics saw a decrease of more than 3-fold.

By Age Groups

Report Year	HIV					AIDS				
	0-19 yrs	20-29 yrs	30-39 yrs	40-49 yrs	Over 49yrs	0-19 yrs	20-29 yrs	30-39 yrs	40-49 yrs	Over 49yrs
2004	0	7	15	7	<5	0	<5	13	9	<5
2003	<5	8	7	6	<5	0	<5	<5	12	5
2002	<5	15	17	8	<5	0	<5	15	15	<5
2001	<5	10	8	<5	0	<5	<5	10	5	<5
2000	0	10	13	8	<5	0	8	21	11	7
Total	<15	50	60	<34	<20	<5	<28	<63	52	<27

By Risk Factors

Report Year	HIV					AIDS					
	HRH	IDU	MSM	MSM/IDU	NIR	HRH	IDU	MSM	MSM/IDU	NIR	
2004	<5	9	14	<5	<5	6	5	16	0	<5	Most of Kane County cases of HIV/AIDS are among Men Having Sex With Men (MSM), Injection drug users(IDU) and Heterosexual contact (HRH)
2003	5	5	5	0	10	5	<5	14	0	<5	
2002	11	11	19	<5	<5	7	11	13	<5	<5	
2001	<5	<5	10	0	5	<5	5	8	<5	<5	
2000	7	7	12	<5	<5	10	12	22	<5	<5	
Total	<33	<37	60	<15	<30	<32	<38	73	<15	<25	

Cell sizes smaller than 5 cases will be designated as <5.

Source: Illinois Department of Public Health

Reported HIV/AIDS Cases For Kane County By City of Residence

Kane County City/Report year	HIV					5-Year Total	AIDS					5-Year Total
	2000	2001	2002	2003	2004		2000	2001	2002	2003	2004	
AURORA	10	9	15	14	17	65(41%)	22	5	16	10	16	69(44%)
ELGIN	13	11	14	7	8	53(34%)	16	8	13	10	7	54(35%)
Tri-Cities**	1	3	9	2	4	19(12%)	3	2	4	2	1	12(8%)
Other*	8	0	7	2	3	20(13%)	6	5	3	2	4	20(13%)
Total	32(20%)	23(15%)	45(29%)	25(16%)	32(20%)	157(100%)	47(30%)	20(13%)	36(24%)	24(15%)	28(18%)	155(100%)

*Tri-Cities= Batavia, Geneva and St. Charles

**Other= Alonquin, Carpentersville, Dundee, East Dundee, Elburn, LaFox, Lake In The Hills, Montgomery, North Aurora, Sleepy Hollow and South Elgin.

Aurora and Elgin account for 75% of total reported HIV cases and 79% of total AIDS cases.

Sexually Transmitted Diseases in Kane County, 1999 to 2003

Disease, site or stage	2003	2002	2001	2000	1999	5 Yr Total
Chlamydia, all	944	850	795	731	662	3,982
Gonorrhea, all	276	304	261	235	301	1,377
Syphilis, primary	2	0	<5	<5	<5	2
Syphilis, secondary	5	<5	<5	<5	<5	5
Syphilis, early latent	2	<5	<5	<5	8	10
Syphilis, late latent	12	8	11	13	7	51
Syphilis, late unknown	0	<5	0	0	0	0
Syphilis, congenital	0	0	0	0	0	0
Syphilis, neurosyphilis	2	0	0	0	<5	2
Total STD Cases	1,243	1,170	1,074	982	982	5,451

Chlamydia accounted for 73% of all STD cases for the 5 years recorded and had increased by 43% from 1999 to 2003. However, Gonorrhea cases have not changed appreciably in the 5 years studied. Infectious syphilis has modestly increased, however, the numbers are too small to make any meaningful interpretation.

Source: Illinois Department of Public Health

Sexually Transmitted Diseases By City of Residence, 1999 to 2003 (5-year total)

	Chlamydia		Gonorrhea		Infectious Syphilis	
	Number	Percent	Number	Percent	Number	Percent
Algonquin	11	0.3%	5	0.4%	0	0.0%
Aurora	1970	49.5%	774	56.2%	15	40.5%
Batavia	104	2.6%	34	2.5%	1	2.7%
Big Rock	6	0.2%	1	0.1%	0	0.0%
Carpentersville	388	9.7%	88	6.4%	3	8.1%
Dundee	9	0.2%	1	0.1%	0	0.0%
East Dundee	5	0.1%	0	0.0%	0	0.0%
Elburn	20	0.5%	3	0.2%	0	0.0%
Elgin	1006	25.3%	316	22.9%	11	29.7%
Geneva	41	1.0%	25	1.8%	3	8.1%
Gilberts	4	0.1%	0	0.0%	0	0.0%
Hampshire	12	0.3%	4	0.3%	0	0.0%
Hoffman Estates	12	0.3%	4	0.3%	0	0.0%
Huntley	3	0.1%	0	0.0%	0	0.0%
La Fox	1	0.0%	0	0.0%	0	0.0%
Lake in the Hills	2	0.1%	0	0.0%	0	0.0%
Maple Park	11	0.3%	0	0.0%	0	0.0%

As with HIV/AIDS, Aurora and Elgin accounted for more than 70% of each category of STD cases.

<i>Contd</i>	Chlamydia		Gonorrhea		Infectious Syphilis	
	Number	Percent	Number	Percent	Number	Percent
Montgomery	55	1.4%	24	1.7%	0	0.0%
Mooseheart	1	0.0%	0	0.0%	0	0.0%
North Aurora	61	1.5%	19	1.4%	0	0.0%
Sleepy Hollow	2	0.1%	0	0.0%	0	0.0%
South Elgin	61	1.5%	22	1.6%	0	0.0%
St Charles	112	2.8%	29	2.1%	3	8.1%
Sugar Grove	14	0.4%	2	0.1%	0	0.0%
Wayne	1	0.0%	1	0.1%	0	0.0%
West Chicago	4	0.1%	0	0.0%	0	0.0%
West Dundee	13	0.3%	0	0.0%	1	2.7%
<i>Unknown</i>	53	1.3%	24	1.7%	0	0.0%
Total	3,982	100.0%	1,377	100.0%	37	100.0%

Source: Illinois Department of Public Health

Other Morbidity Data For Kane County

Cancer Incidence Data for Kane County, 1996-2000 Aggregate

Cancer Type	Kane Male Count	Kane Male Rate	IL Male Rate	Kane Female Count	Kane Female Rate	IL Female Rate	% KC-IL Diff Male	% KC-IL Diff Female
Oral Cavity & Pharynx	96	14.2	16.6	64	7.8	6.3	-14%	24%
Esophagus	49	8.4	9.7	17	2.2	2.3	-13%	-4%
Stomach	63	10.5	12.0	36	4.3	5.3	-13%	-19%
Colon and Rectum	391	66.8	72.1	404	49.3	51.6	-7%	-4%
Liver	43	6.8	6.5	15	1.8	2.4	5%	-25%
Pancreas	65	10.5	13.5	64	7.9	10.4	-22%	-24%
Lung and Bronchus	500	85.6	99.3	383	48.7	54.6	-14%	-11%
Bone	14	1.6	1.0	2	0.3	0.7	60%	-57%
Melanomas, skin	89	12.1	14.2	104	11.7	9.0	-15%	30%
Breast, Invasive	9	1.1	1.5	1119	134.1	133.3	-27%	1%
Cervix	N/A	N/A	N/A	91	10.0	11.4	0%	-12%
Corpus & Uterus	N/A	N/A	N/A	198	24.4	25.4	0%	-4%
Ovary	N/A	N/A	N/A	141	16.8	16.6	0%	1%
Prostate	912	153.4	156.8	N/A	N/A	N/A	-2%	0%
Testis	59	5.6	4.9	N/A	N/A	N/A	14%	0%
Bladder	218	38.0	39.0	94	11.4	10.3	-3%	11%
Kidney	110	16.1	17.1	67	8.0	9.2	-6%	-13%
Brain & Nervous System	54	7.0	7.6	57	6.5	5.3	-8%	23%
Hodgkins Lymphoma	18	2.0	3.3	34	3.7	2.4	-39%	54%
Non-Hodgkins Lymphoma	154	23.6	23	143	17.4	15.9	3%	9%
Multiple Myeloma	30	4.9	7.0	33	3.9	4.9	-30%	-20%
Leukemia	109	16.5	15.9	78	8.8	9.5	4%	-7%
All other sites	263	40.6	49.2	296	34.8	40.7	-17%	-14%

Kane county rates were at least 20% higher than IL for cancers of the oral cavity & pharynx, skin melanomas, brain & nervous system, and Hodgkins lymphoma among females. Among males KC was lower for most categories than the state except bone where Kane was higher by 60%

Source: IDPH Illinois State Cancer registry

Childhood Lead Surveillance

Blood Lead Levels	2002		2001		2000	
	Kane	State	Kane	State	Kane	State
10 to 14 mcg/dl	268	10,677	339	12,915	434	14,800
>=15mcg/dl	171	5,976	154	7,336	149	8,263
>=10mcg/dl	439	16653	493	20251	583	23063

The rate of decrease in Kane County is consistent with IL

Source: Illinois Department of Public Health

Behavioral Risk Factor Surveillance (BRFSS) Data

Note: BRFSS stats are only for the adult population

(% of Adult Population)	2002 (%)				1997 (%)			
	Kane	Collar	IL	US	Kane	Collar	IL	US
Adult Pop with no Health Plan	12.2	6.8	10.2	14.1	8.9	10.5	11.2	12
Last routine checkup >2 yrs	15.1	14.7	N/A	N/A	23.8	12.5	15.8	12.8
Have no dental insurance	34	N/A	N/A	N/A	N/A	N/A	N/A	N/A
At risk of drinking & driving	5.7	1.2	1.8	N/A	1.8	0.3	3.4	3.9
Arthritis diagnosed by doctor	18.1	17.2	21	N/A	N/A	N/A	N/A	N/A
Told by MD had asthma	10.4	11.7	10.7	11.8	N/A	N/A	N/A	N/A
Told BP high	17.6	21.8	24.3	N/A	19.7	14.1	22.2	23
High Cholesterol	25.1	27.4	29.6	N/A	30.8	24.4	27.2	28.8
Diabetes	3.7	4.4	5.4	6.7	3.3	3.9	5.4	4.8
Recommended level Physical activity	42.8	N/A	N/A	N/A	N/A	N/A	N/A	N/A
Depressed >2days in past month	21	N/A	N/A	N/A	N/A	N/A	N/A	N/A
<u>Smoker</u>	19.9	21	21.1	23	28.8	21	23.1	23.2
<u>Obese</u>	20.6	17.5	20.7	22.2	29.6	27.1	29.5	N/A

Note: The underlined risk factors showed marked change between 1997 and 2002 in KC

Screening Activities, BRFSS	2002 (%)				1997 (%)			
	Kane	Collar	IL	US	Kane	Collar	IL	US
Had Mammogram=<1yr (age40+)***	86.9	85.9	88.4	66	78.6	90.5	87.1	62
Had Pap smear =<1yr	87.3	83.4	84.6	68.3	85	91.4	85.7	68.8
Had PSA test =<1yr (age 40+)	80.6	N/A	N/A	N/A	N/A	N/A	N/A	N/A
Had digital rectal exam =<1yr (age40+)	58.5	N/A	N/A	N/A	72.4*	78.4*	76.8*	N/A
Had flu shots in past year	24.3	28	29.1	32.1	19.3	19.9	25	29.6
Had sigmoidoscopy exam =<1yr (age 40+)**	61.1	17.1	33.3	36.6	N/A	N/A	N/A	30.7

Note: The underlined risk factors showed marked change between 1997 and 2002 in KC

*** The mammogram question was asked in 1997 to all women

** Kane County % for adults aged 50 +

* time range was 2 years

IL Dept of Public Health BRFSS, 1997 and 2002, US BRFSS 1997, 2002

Top Ten Diagnosis List		
<i>Diagnosis</i>	<i>Freq</i>	<i>%</i>
<i>Open Wound</i>	1254	4.8%
<i>Abdominal Pain</i>	1184	4.5%
<i>Otitis Infection</i>	1120	4.3%
<i>Sprain</i>	1059	4.1%
<i>Contusion</i>	869	3.3%
<i>OB, Antenatal</i>	803	3.1%
<i>Gastritis, Gastroenteritis</i>	737	2.8%
<i>Fracture</i>	619	2.4%
<i>Bronchitis, Bronchiolitis</i>	618	2.4%
<i>Fever</i>	543	2.1%
<i>Urinary Tract Infection</i>	492	1.9%
<i>Asthma</i>	460	1.8%
<i>Dental/Peridontal</i>	457	1.8%
<i>Headache</i>	407	1.6%
<i>Back Pain/Injury</i>	404	1.5%

Source: Kane County Hospital Emergency Room Summary Report, 2004