

Kane County Maternal-Child Health Service Profile September 2011

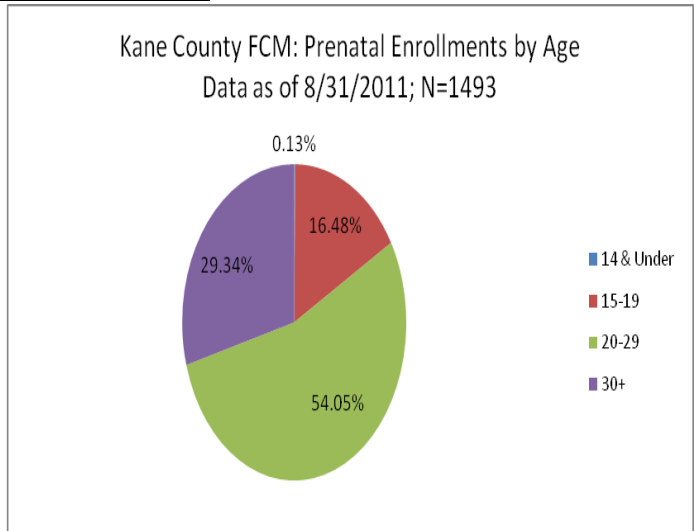
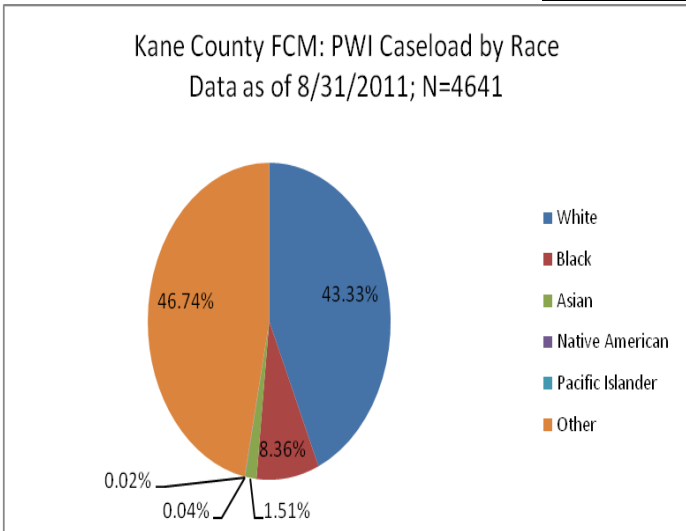


For graphs with state-issued performance outcomes, a red horizontal line on the graph will indicate the performance goal.

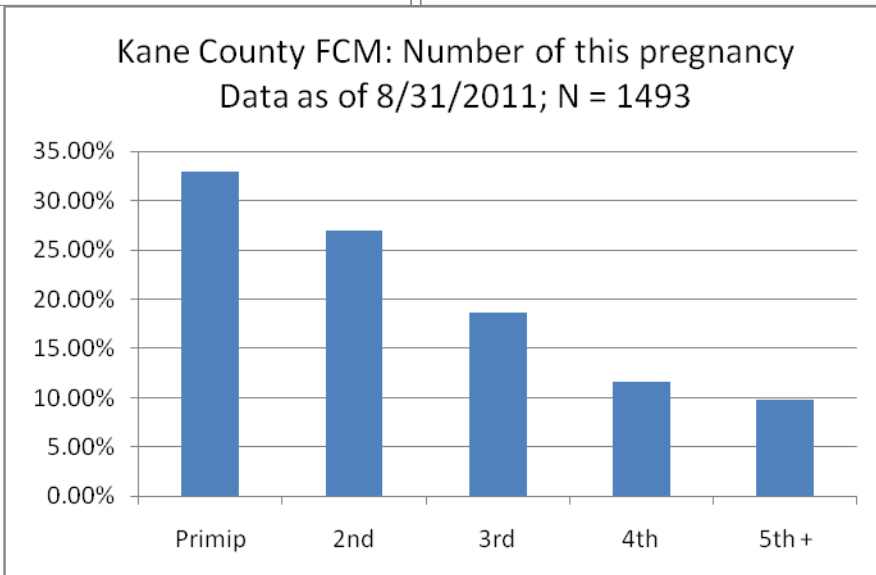
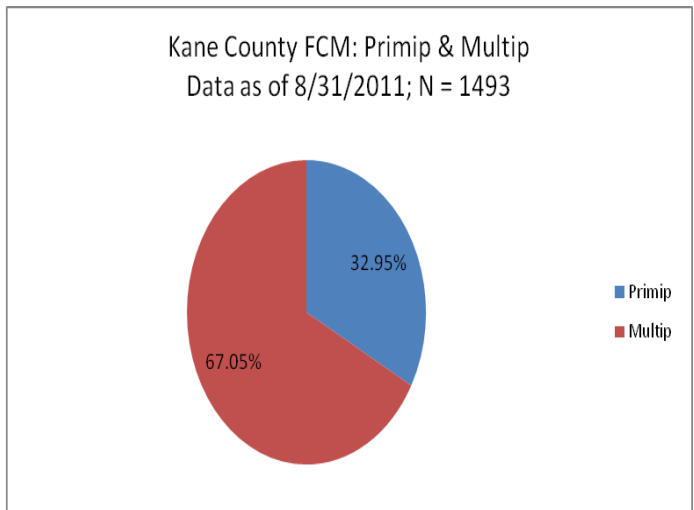
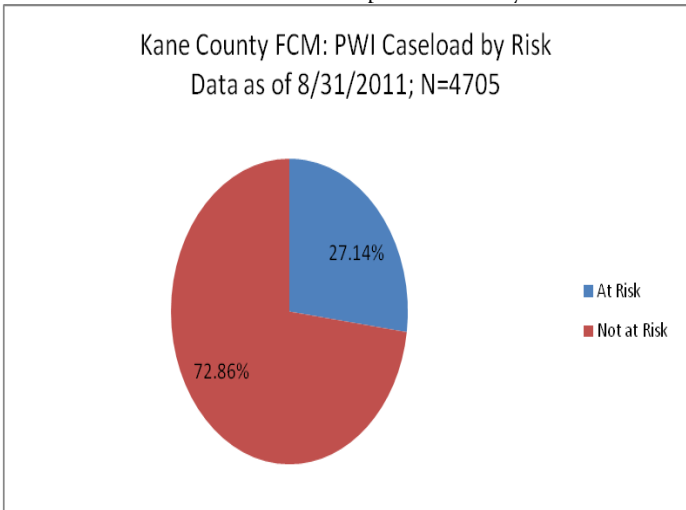
KANE COUNTY MATERNAL CHILD HEALTH PROFILE

September 2011

CASELOAD PROFILE



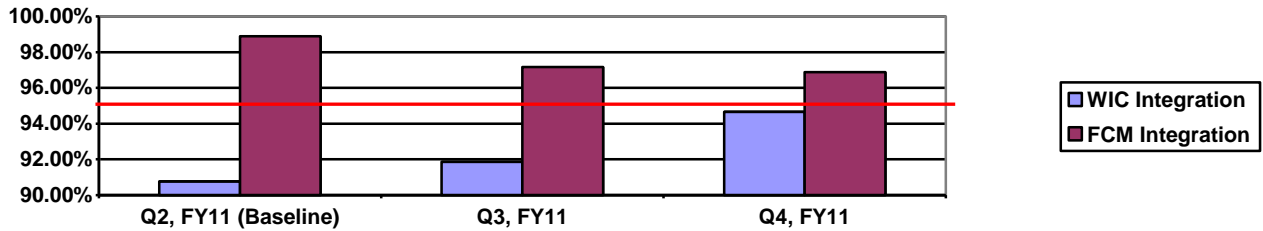
*"White" and "Other" include Hispanic ethnicity



OUTCOME: Integration of WIC and Family Case Management.

Data provided through state performance outcomes for clients in Kane County FCM & WIC.

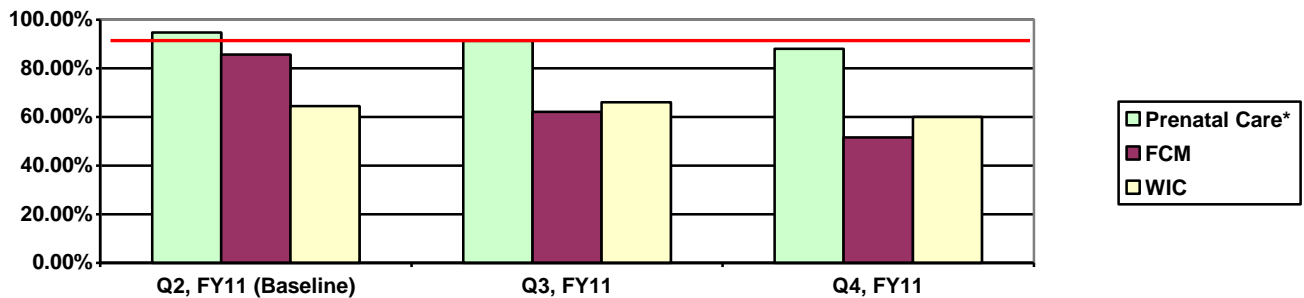
Improvements have been demonstrated in this area within the last 6 months, with integration of both programs above the 95% standard.



OUTCOME: First Trimester Entry into prenatal care, FCM & WIC.

Data compiled from Cornerstone (PA07) using Foxfire ad-hoc reporting software (prenatal care entry) and state performance outcomes (entry into WIC and FCM).

In this data set, a comparison shows entry into prenatal care, FCM & WIC. First trimester entry into prenatal care stands around 90%, but programmatic entry does not happen at a similar rate.

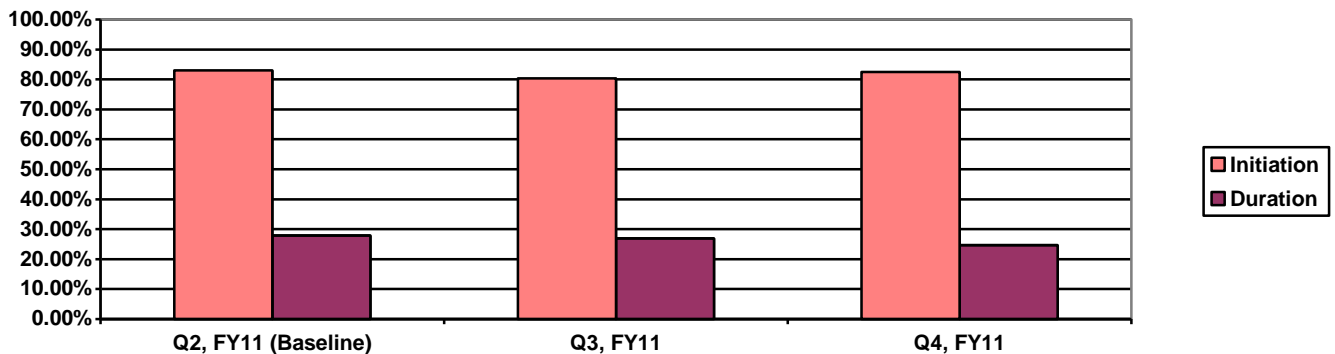


**For the baseline data, FCM and Prenatal Care data reflects only data collected by KCHD 10/1/2010-11/9/2010.*

OUTCOME: Breastfeeding Initiation & Duration for WIC Participants.

Data provided through state performance outcomes for clients in Kane County WIC.

Breastfeeding Initiation stands above the 75% state performance standard, but Breastfeeding Duration to 6 Months has not yet met the 50% performance standard.



KCHD CALL CENTER

