



# Daycare News

March 15, 2022

While things are improving, the COVID-19 pandemic is not over and guidance is continually changing as the situation changes. The Kane County Health Department is your partner in ensuring a safe environment for daycare staff and students. Visit our website for [current guidance and resources for daycares](#).

## This issue:

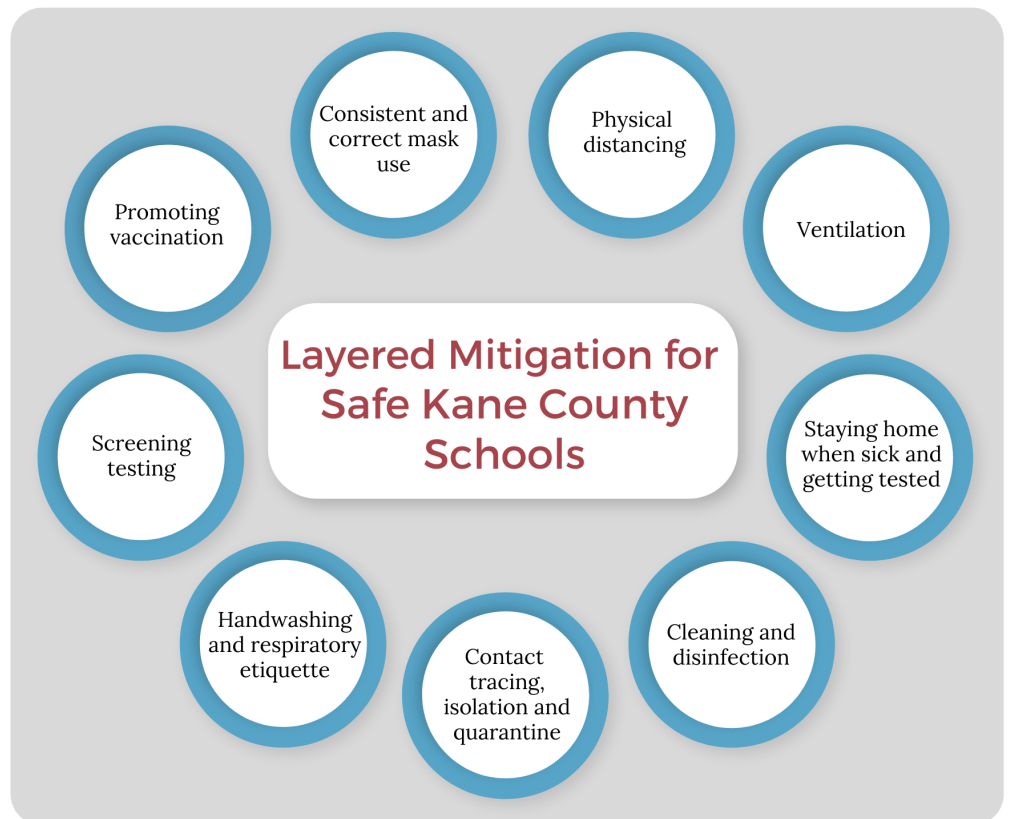
- Layered Mitigation
- Masking Following Isolation and Quarantine
- Communicable Disease Code
- Questions for KCHD

## Layered Mitigation

Daycares are safer for children and staff when multiple layers of mitigation are applied. Since the mask mandate is no longer in effect, many daycares have removed this layer of mitigation.

Daycares should remove one layer of mitigation at a time and evaluate the impact on the facility community before removing another layer of mitigation.

See the full KCHD statement on layered mitigation [here](#).



## Masking Following Isolation and Quarantine

Current [DCFS guidelines](#) state that children or staff who have tested COVID-19 positive, or who were a close contact, should be excluded for 10 days. This can be shortened to 5 days if the staff or student can correctly and consistently mask for days 6-10. Children two and under should be excluded for the full 10 days.

It is important to note that the lifting of the indoor mask mandate in schools only applies to those who are not COVID-19 positive, do not have symptoms, and have not been identified as close contacts.



## Section 690.30, Control of Communicable Disease Code

This section of the [Joint Committee on Administrative Rules](#) details implementations required to control the spread of communicable diseases. Of note is section 690.30 part C, below:

### Schools, Child Care Facilities, and Colleges/Universities

1. Except in an emergency, the occurrence of a case of a communicable disease in a school, child care facility or college/university should not be considered a reason for closing the school, facility or college/university.
2. Persons suspected of being infected with a reportable infectious disease for which isolation is required, or persons with diarrhea or vomiting believed to be infectious in nature, shall be refused admittance to the school or child care facility while acute symptoms are present.
3. School, child care facility, and college/university authorities shall handle contacts of infectious disease cases as prescribed in this Part, or as recommended by the local health authority.
4. When outbreaks of disease occur in any child care facility, staff and attendees of the facility may be considered to be contacts to cases and may be required by the local health authority to submit specimens for testing.

## Questions for KCHD

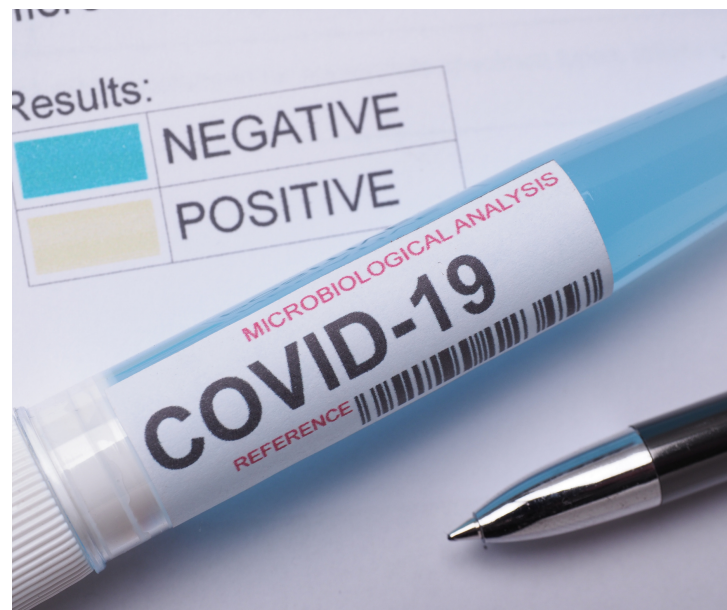
The Kane County Health Department School Team is available to answer your questions regarding COVID-19 guidelines for daycares. Here are some recently submitted questions and answers.

### **Is unvaccinated school staff still required to test weekly?**

Per the DCFS guidance, unvaccinated school staff should be tested weekly. The Executive Order pertaining to staff testing does not expire until April 2, 2022.

### **Now that the mask mandate has been dropped, how are close contacts identified?**

If masking was not in place during the exposure, then a close contact would be identified as an individual who was within 6 feet of the case for 15 minutes in a 24-hour period. Close contacts should be notified and excluded.



### **Are COVID-19 self-tests reliable for assessing whether or not staff or children can return to daycare after an exposure?**

Self-tests for COVID-19 are readily-available and give rapid results. However, it's important to note that they are not a reliable indicator for returning to daycare after a COVID-19 exposure.

Positive results from self-tests are highly reliable and means that the virus was detected, an infection is present, and isolation is recommended. A negative test, however, means that the test did not detect the virus, but doesn't rule out an infection. A negative self-test result may not be reliable, especially if you have symptoms associated with COVID-19.

A negative PCR test is recommended for a safe return to daycare after a close contact exposure.

**Do you have questions for the KCHD School Team? Email us at: [school@co.kane.il.us](mailto:school@co.kane.il.us)**