

# 2025

## Report to the Community



Connecting people.  
Improving health.





## Table of Contents

Executive Director Letter	2
Behavioral Health	3
Communicable Disease	4
Community Preparedness	5
Environmental Safety	6
Maternal and Child Health	7
Financial Report	8
Our People and Community Connections	9

## Vision

Every resident has the knowledge and access to opportunities to live their healthiest life possible.

## Mission

To improve health outcomes by working in partnership with the community to understand the cultural, environmental, historical and social issues impacting our residents' health so we can effectively direct resources and services in an equitable and inclusive manner.

## Values

Listening, Respecting, Helping, Improving, Excelling

## Leadership

Michael Isaacson, MPH  
Executive Director

Kinnell Snowden  
Chief Financial Officer

Elizabeth Alleman, MPH  
Director of Planning and  
Information

Laura Barrett, MSN, RN, CMCN  
Director of Disease Prevention

Uche Onwuta, MS, MPH  
Director of Health Protection

Kim Peterson, MA, MS  
Director of Community Health

## Kane County Governing Board Public Health Committee

Cherryl Fritz Strathmann, Chair  
Jarett Sanchez, Vice-Chair  
Alex Arroyo  
Leslie Juby  
Ted Penesis  
Bill Tarver  
David Young

## Kane County Health Advisory Committee

Diane Homan, MD  
Ed Hunter  
Karin Podolski, RN, MSN, MPH  
Dorothea Poulos, MD  
Linnea Windel, MSN, RN

# Executive Director Message

## Michael Isaacson, MPH

The employees of the Kane County Health Department take tremendous pride in working together with the community to create an environment that supports health. In 2025, our team



was active engaging the public to prevent diseases, linking people with care, preparing for emergencies and providing education on a wide variety of issues. Public Health does not exist without a strong partnership with residents, elected officials, and the employees of organizations that provide service to the public. I am thankful for each of our employees who lived our values in their interactions with others by listening to understand different perspectives and respecting people with different backgrounds and viewpoints. Through this approach, our team creates opportunities where interventions can be most effective.

Every three years, the Health Department conducts a comprehensive community health assessment. This assessment leads to a prioritization process with residents and community organizations where the top health issues impacting our community are identified. The four current priorities are Behavioral Health, Access to Health Services, Food Access and Housing. These issues are immense and are driven by many factors. Though there is more to do, I am very proud of the work that has been done to address them over the past year. Thank you to our employees, the County Board and our community partners who have invested their time and resources in making Kane County a better place.

# BEHAVIORAL HEALTH

The Kane County Health Department advanced behavioral health through programs emphasizing prevention, early intervention, and recovery. Key efforts included overdose and suicide prevention, mental health promotion, and training for community mental health professionals. Initiatives such as Overdose Fatality Review, community education, and cross-sector collaboration helped identify service gaps, strengthen systems, and improve outcomes for residents.

KCHD used American Rescue Plan Act (ARPA) funding to support local organizations and expand access to behavioral health services, enhance housing stability, and address food insecurity and other basic needs. Behavioral Health 360, a mental health self-help website, was launched to provide residents with easy access to reliable resources, coping strategies, and connections to local support services. These efforts reflect KCHD's commitment to a comprehensive, trauma-informed, and culturally responsive approach to behavioral health in Kane County.

**1,273**

webinar attendees gained practical strategies for addressing a range of behavioral health topics

**12,925**

users engaged with Behavioral Health 360, receiving mental health information and resources

**1,275**

early childhood education professionals trained to reduce impact of mental health challenges and social-emotional delays

**86**

students participated in the 2025 Kane County Youth Voices Forum on Mental Health

**106**

community members received free neuropsychological evaluations

**654**

clients connected to local care providers through our Information and Referral Program



# COMMUNICABLE DISEASE

The Kane County Health Department protects the community from infectious diseases through ongoing surveillance, case investigations, vaccine promotion and timely education for both the public and healthcare providers, including trainings and an annual conference. The department supports local providers and community partners by offering guidance, resources, and vaccination promotion to reduce disease spread.

In 2025, KCHD launched a fully automated outbreak reporting and management system, giving facilities 24/7 access to disease-specific response guidance.



Infection prevention and control (IPC) support was expanded in long-term care facilities through technical assistance aligned with CDC and IDPH guidelines, while strengthened partnerships helped reduce transmission. In April 2025, KCHD convened hospitals and long-term care partners for the Kane County IPC Strategic Planning Meeting to set countywide infection control goals and objectives.

**5,588**

notifiable diseases and conditions investigated and managed

**96**

disease outbreaks investigated, monitored and managed, minimizing community exposure

**1,166**

vaccinations provided to protect children, families, and the community from preventable diseases

**1,726**

tuberculosis outreach activities to educate the community, prevent disease spread, and connect individuals to testing and treatment

**1,019**

providers, community members and partners educated on infectious disease prevention, infection control practices and community safety

**76**

foodborne illness investigations conducted, ensuring prompt response to potential outbreaks, reducing the risk of illness and promoting food safety

# COMMUNITY PREPAREDNESS

The Kane County Health Department promotes community preparedness by equipping residents, organizations, and partners with the knowledge, skills, and resources needed to respond effectively to emergencies and protect public health. Key training programs include CPR, Stop the Bleed, and naloxone administration, giving community members life-saving skills for medical emergencies. We also provide firearm safety education and distribute gun locks to reduce the risk of accidental injuries.

In addition to hands-on training, we engage the community through educational programs, newsletters, and digital outreach via our website and social media. By combining practical skills training with ongoing education and accessible communication, KCHD works to strengthen the resilience of those who live in Kane County.

**589**

first responders and community members trained in CPR and Stop the Bleed, equipping them with life-saving skills

**3,107**

free gun locks and safes given to residents to promote safe firearm storage and prevent injuries and deaths

**19,584**

doses of naloxone opioid overdose-reversing nasal spray distributed

**44**

households served in the Rehousing Assistance Program

**309**

Hours contributed by Medical Reserve Corps volunteers supporting public health and emergency preparedness

**91**

people trained on how Firearm Restraining Orders prevent injuries and deaths and provide opportunities for healing

**4,255**

988 Suicide and Crisis awareness signs and decals distributed to agencies and community members



# ENVIRONMENTAL SAFETY

The Kane County Health Department protects public health by ensuring safe food, water, and environments across the community. In 2025, KCHD continued inspections of food establishments, private wells and septic systems to prevent contamination and maintain safety standards. The department monitored environmental hazards, investigated health-related complaints, and responded to concerns such as foodborne illness, unsafe water and sanitation issues.

KCHD also provided education on safe practices for food handling, water quality, lead exposure and vector control. These efforts, combined with outreach and community partnerships help reduce health risks, protect residents and promote a safer, healthier environment throughout Kane County.



**4,603**

food service provider inspections completed to ensure safety and prevent foodborne illness

**251**

well and septic permits issued, ensuring safe water and sanitation systems for Kane County residents

**433**

lead inspections completed to ensure safe environments for children and reduce exposure to harmful lead hazards

A person wearing yellow gloves is inspecting a septic system access point. The access point is a circular opening in the ground, and the person is looking into it. The background is a grassy area.

**SEPTIC SYSTEMS 101**  
3-PART VIDEO SERIES

Guidance on caring for your septic system from routine maintenance and inspections to understanding permits and avoiding costly problems.

  
kanehealth.com

**73**

foodborne illness investigations completed to identify sources and prevent further spread

**354**

people viewed a three-part video series on septic system maintenance, inspections and troubleshooting

# MATERNAL AND CHILD HEALTH

The Kane County Health Department works to ensure that every child has the healthiest possible start in life and that families have the support they need to thrive. Our maternal and child health programs focus on promoting healthy pregnancies, supporting parents and caregivers, and fostering safe, nurturing environments where children can grow and develop.



Through services such as nurse home visiting, community education, and connections to local resources, we partner with families from pregnancy through early childhood. These efforts help identify needs early, connect families to support, and strengthen the health both children and caregivers.

**39**

families connected through Kane Kares with a nurse for guidance during pregnancy and early childhood

**12,490**

All Our Kids (AOK) Parent Resource Guides distributed to connect families to essential early childhood resources

**379**

referrals connected expectant parents and families with young children to nurse home visiting services



**3,648**

people received lead poisoning prevention education on risks and how to protect their homes and families

**3,637**

referrals connected individuals and families to needed services through the Integrated Referral and Intake System (IRIS)

**336**

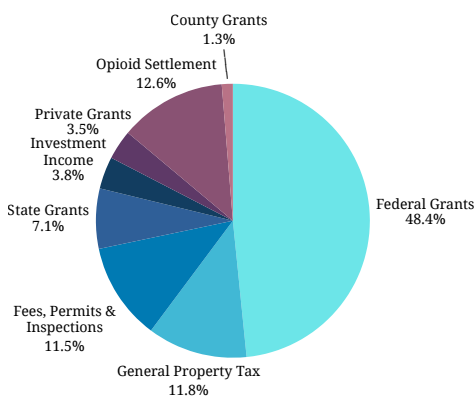
meetings between Kane Kares nurse home visitors and clients provided support, guidance and care

**45**

Parent Cafés gave parents a space to share experiences, strengthen parenting skills and build social connections

# 2025 FINANCIAL REPORT

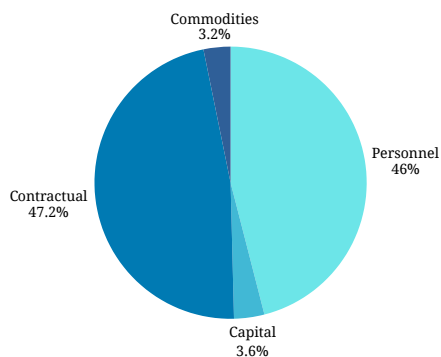
## Kane County Health Department FY2025 Preliminary Unaudited Statement of Revenues and Expenditures



### Revenue

Federal Grants	\$8,086,680
Opioid Settlement	\$2,098,881
General Property Tax	\$1,979,478
Fees, Permits & Inspections	\$1,930,628
State Grants	\$1,193,813
Investment Income	\$630,359
Private Grants	\$584,584
County Grants	\$213,229

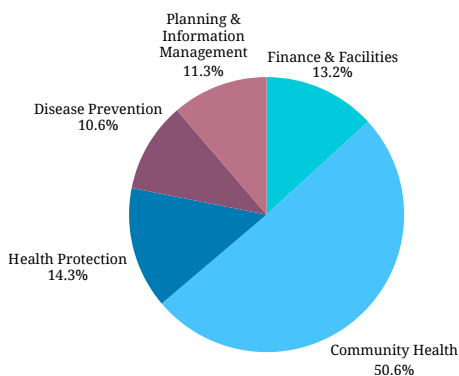
**Total** **\$16,717,652**



### Expenses

Contractual	\$7,552,980
Personnel	\$7,355,041
Capital	\$575,986
Commodities	\$513,026

**Total** **\$15,997,033**



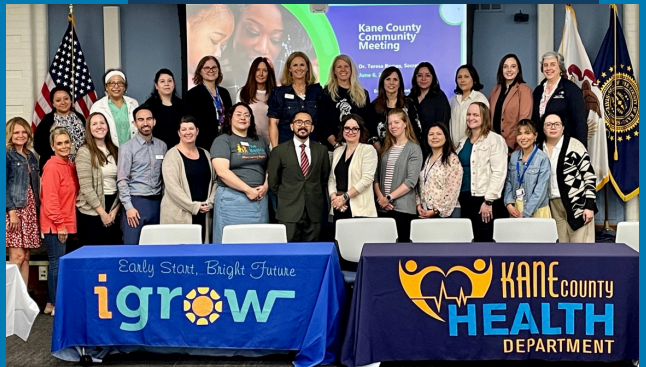
### Expenses by Division

Community Health	\$8,098,094
Health Protection	\$2,293,024
Finance & Facilities	\$2,107,771
Planning & Information Mgmt	\$1,809,412
Disease Prevention	\$1,688,732

**Total** **\$15,997,033**

# Our People and Community Connections

The Kane County Health Department's work is made possible by the dedication of our staff and the strong partnerships we maintain with the community. Throughout 2025, from staff-led workshops and professional development to community programs and awareness events, these efforts highlight our commitment to serving and connecting with the people of Kane County.





# Contact Us



630-208-3801



[askus@kanecountyil.gov](mailto:askus@kanecountyil.gov)



[www.kanehealth.com](http://www.kanehealth.com)



1240 N. Highland Avenue

Aurora, IL 60506

Monday - Friday, 8:30am - 4:30pm

2170 Point Blvd.

Elgin, IL 60123

Monday - Friday, 8:30am - 4:30pm



Connecting people.  
Improving health.