

PUBLIC HEALTH COMMITTEE REPORT

Essential Service No. 10

[Contribute to and apply the evidence base of public health](#)



Front line troops told:

'You're on the right track'

Special guest U.S. Surgeon General Dr. Jerome Adams visited the Kane County Health Department prior to addressing the Opioid Conference at Waubensee Community College. IDPH Director Dr. Nirvan Shah and U.S. Rep. Randy Hultgren accompanied him to KCHD's offices for a roundtable meeting about the opioid epidemic and the efforts at preventing its spread in our county. KCHD Executive Director Barbara Jeffers hosted the event, and County Board Chairman Chris Lauzen also addressed the attendees.



Ten essential services of Public Health

1. Monitor health status and understand health issues facing the community
2. Protect people from health problems and health hazards
3. Give people the information they need to make healthy choices
4. Engage the community to identify and solve health problems
5. Develop public health policies and plans
6. Enforce public health laws and regulations
7. Help people receive health services
8. Maintain a competent public health workforce
9. Evaluate and improve programs and interventions
10. Contribute to and apply the evidence base of public health

Essential Service No. 1

Monitor health status and understand health issues facing the community



Number of cases
 Statewide: 159
 Kane County: 1

(as of May 2. Case numbers updated every Wednesday at 1:30 p.m.)



Synthetic cannabinoids linked to four deaths

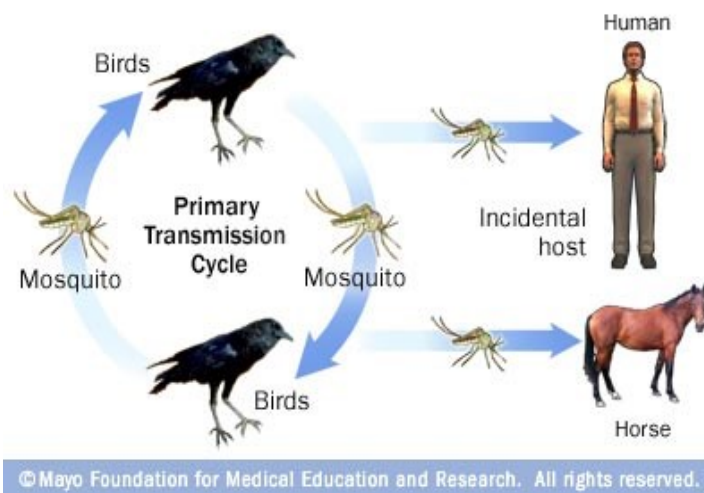
It's not the typical public health problem, but with case numbers expanding daily through March and April, it became imperative to get the word out about synthetic cannabinoids quickly and often. Kane County's one case was diagnosed early, and fortunately that number has not increased. Still, the warning needed to be issued to not use the product that was laced with rat poison. The majority of cases were found [downstate](#).

Essential Service No. 2

Protect people from health problems and health hazards

West Nile vs. Zika

Kane County residents are at very low risk of transmission of the Zika Virus. However, because people often travel to areas where it is more common, we will be actively monitoring the Zika virus and will provide up-to-date information as we receive it.



Warm weather means another West Nile season

KCHD encourages residents to be vigilant about eliminating sources for mosquitoes to breed, as well as using personal protection to avoid mosquito bites. Warmer weather means that mosquitoes are becoming active. It's never too early for residents to inspect their homes and yards for sources of standing water where mosquitoes are likely to breed. We will provide regular updates on monitoring activities throughout the summer, available [here](#).

Help Prevent West Nile and Zika mosquitoes

- ◆ Don't let standing water collect on your property.
- ◆ Check for turned-up garbage can lids, grill covers and children's toys.
- ◆ Empty, clean & refill birdbaths & wading pools frequently.