

PUBLIC HEALTH COMMITTEE REPORT

Essential Service #3

[Give people the information they need to make healthy choices](#)



**2015 Annual
Report takes a look back at
an eventful year**

Click [here](#) to see the full report



Annual report tells of stories and successes

By looking back at where we've been, we can get a good idea of where we need to go. Producing an annual report gives us a chance to review the preceding year and keeps us moving forward on our journey. Our bilingual report touches on some of the stories and successes we experienced in 2015. Each year we try to build on the previous one, improving the quality of our service and building a healthier community as we move toward being the healthiest residents in Illinois.

Ten essential services of Public Health

1. Monitor health status and understand health issues facing the community
2. Protect people from health problems and health hazards
3. Give people the information they need to make healthy choices
4. Engage the community to identify and solve health problems
5. Develop public health policies and plans
6. Enforce public health laws and regulations
7. Help people receive health services
8. Maintain a competent public health workforce
9. Evaluate and improve programs and interventions
10. Contribute to and apply the evidence base of public health

Essential Service #2

[Protect people from health problems and health hazards](#)



August is NIAM: Learn more about immunizations by clicking [here](#)

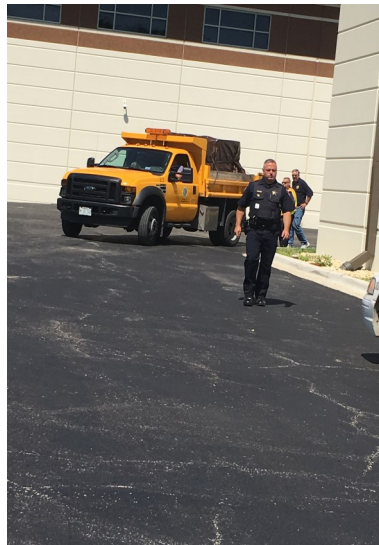
NIAM celebrates the importance of vaccines for all

With the start of school just around the corner, it's time for parents to make sure their children have all their immunizations. Immunizations represent one of the greatest public health accomplishments of the 20th century. The purpose of NIAM is to celebrate the benefits of vaccination and highlight the importance of vaccination not only for students, but for people of all ages.

Essential Service #5

[Develop health policies and plans](#)

KCHD participates in full-scale, statewide emergency preparedness exercise June 13, 14 & 15



Left, KCHD staffers Lindsay Bow, Jennifer Fearday and Brandi Wamhoff check the SNS "inventory", while a Kane County Sheriff's deputy clears the way for the KDOT delivery truck. Other county departments who partnered in the exercise included the Office of Emergency Management, Human Resources, the State's Attorney's Office, Judiciary as well as the Kane County Forest Preserve District. Multiple cities, as well as the St. Charles School District, also participated.

What would happen if?

The scenario: A terrorist group releases weapons-grade anthrax in three locations.

The action: Mobilize the Strategic National Stockpile (SNS).

The result: Medical Counter Measures are distributed throughout Kane County. KCHD partnered with agencies across Kane County and the northern Illinois to stage the three-day exercise. Learn more about emergency preparedness by clicking [here](#).