

PUBLIC HEALTH COMMITTEE REPORT

Essential Service #2

[Protect people from health problems and health hazards](#)

The Kane County Healthy Places Coalition shines a spotlight on Lead Poisoning Awareness during October



Kane County Healthy Places Coalition partners collaborate all year, but especially in October to highlight lead poisoning risks and prevention. **Since lead poisoning is entirely preventable**, we want to make parents and other residents aware that lead – from many sources – continues to poison young children pregnant women and other adults in Kane County. Our Coalition is partnering with physicians, retail paint and hardware stores, and permit departments this month to shine a spotlight on lead poisoning awareness. Click [here for more info](#).

Ten essential services of Public Health

1. Monitor health status and understand health issues facing the community
2. Protect people from health problems and health hazards
3. Give people the information they need to make healthy choices
4. Engage the community to identify and solve health problems
5. Develop public health policies and plans
6. Enforce public health laws and regulations
7. Help people receive health services
8. Maintain a competent public health workforce
9. Evaluate and improve programs and interventions
10. Contribute to and apply the evidence base of public health

Essential Service #2

[Protect people from health problems and health hazards](#)



KANE COUNTY
— QUILTS —
MORE ILLINOISANS
ARE CHOOSING A
SMOKE-FREE LIFE.
YOU CAN TOO.

**Start your
 journey to
 quitting tobacco here:
 1-866-
 QUILTYES**

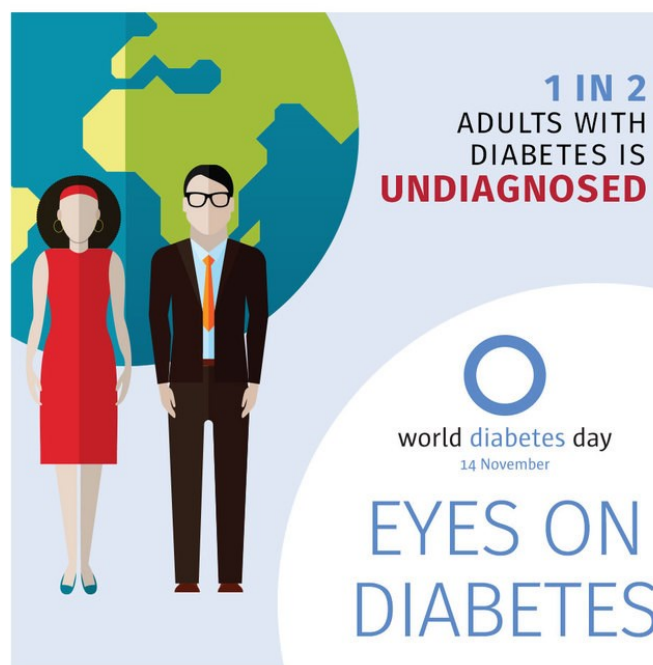
Taking that important step

Every year, on the third Thursday of November, smokers across the nation take part in the American Cancer Society's **Great American Smokeout** event. Encourage someone you know to use the date to quit, or plan in advance and then quit smoking that day. By quitting – even for 1 day – smokers take an important step to a healthier life and reducing their cancer risk. [Click here for more info on quitting](#)

Essential Service #4

[Engage the community to identify and solve health problems](#)

Learn your risk of type 2 diabetes and take action. [Click here to take this quick and easy test.](#)



CHIP priority targets chronic disease

The Kane County Community Health Improvement Plan (CHIP) identifies chronic diseases such as diabetes as a top priority. **World Diabetes Day** Nov. 14 intends to bring awareness to the risk. According to the Centers for Disease Control and Prevention (CDC) 30 million people in the U.S. live with it and its devastating health problems. Millions don't even know they have it and aren't getting the medical care they need. [Click here](#) for more info on the CHIP.