



PUBLIC HEALTH COMMITTEE REPORT

Essential Service #7. Assure an effective system that enables equitable access to the individual services and care needed to be healthy

Flu Clinics for the Kane County Homeless Population

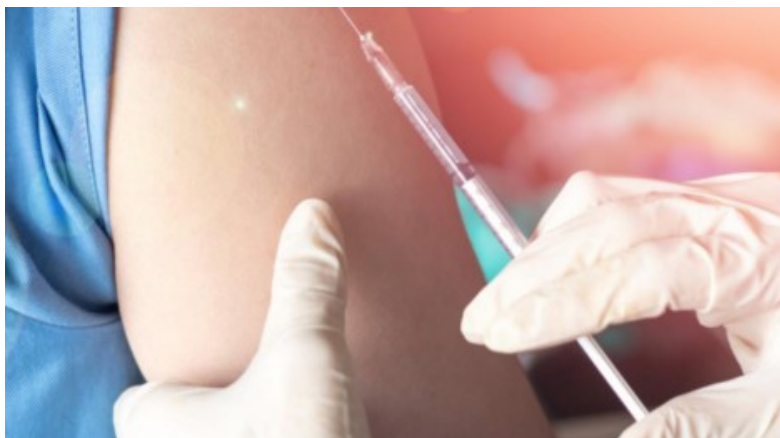
Having a flu shot is an important step to protect your health during flu season. In face of the COVID-19 pandemic, it gets even more important. Although the vaccine may not prevent you 100% from getting the flu, it allows for your body to develop a better response if you get sick with it; now it is more important than ever to be well and prevent serious complications from the flu, leaving space for the care of people sick with COVID-19 and avoiding to overload the healthcare system.

During the second round of 2020 Flu Clinics, the Kane County Health Department will be offering immunization clinics against influenza to the most vulnerable members of our community.

KCHD once again accessed its Medical Resource Corps of volunteers to assist. The clinics provide another opportunity to train and exercise for mass dispensing operations, while supporting homeless Kane residents.

The Flu Clinics directed to the community are held at:

- Hesed House
November 5 and 12, 4 to 8 p.m.
- Lazarus House
November 17, 4 to 8 p.m.
- PADS in Elgin
Will be rescheduled



Ten Essential Services of Public Health 2020

1. Assess and monitor population health status, factors that influence health, and community needs and assets
2. Investigate, diagnose, and address health problems and hazards affecting the population
3. Communicate effectively to inform and educate people about health, factors that influence it, and how to improve it
4. Strengthen, support, and mobilize communities and partnerships to improve health
5. Create, champion, and implement policies, plans, and laws that impact health
6. Utilize legal and regulatory actions designed to improve and protect the public's health
7. Assure an effective system that enables equitable access to the individual services and care needed to be healthy
8. Build and support a diverse and skilled public health workforce
9. Improve and innovate public health functions through ongoing evaluation, research, and continuous quality improvement
10. Build and maintain a strong organizational infrastructure for public health

Essential Service #4. Strengthen, support, and mobilize communities and partnerships to improve health

Antigen Testing

IDPH released guidance on the use of rapid point-of-care testing in schools and other community settings. This guidance is released in conjunction with the state’s distribution of Abbott BinaxNOW tests to local health departments, schools and other settings.

The Abbott BinaxNOW test is a fast-acting antigen test granted an Emergency Use Authorization (EUA) in August by the U.S. Food and Drug Administration (FDA) to detect the presence of SARS-CoV-2 viral protein. These tests are inexpensive, point-of-care (POC) tests, with results available in as little as 15 minutes to an hour.

The \$5 rapid-response COVID-19 antigen test that is roughly the size of a credit card. The test could be administered in a doctor’s or school nurse’s office and uses technology similar to home pregnancy tests. The emergency approval comes as demand grows for greater access to COVID-19 diagnostic tools that deliver results in minutes, rather than days to help quickly contain infections.



The Kane County Health Department will begin distribution to select locations this month.

Essential Service #3, Communicate effectively to inform and educate people about health, factors that influence it, and how to improve it

November Is Pancreatic Cancer Awareness Month

Pancreatic cancer has the highest mortality rate of all major cancers. It is currently the third leading cause of cancer-related death in the United States after lung and colon. In 2020, an estimated 57,600 Americans will be diagnosed with pancreatic cancer and more than 47,050 will die from the disease. While death rates are declining for many other cancers, death rates are increasing for pancreatic cancer.

Early detection helps save lives. Learn & share the facts, symptoms and risk factor of pancreatic, it can help with early detection, motivate healthy life choices and provide guidance on when to seek genetic counseling. For more information, visit Pancreatic.org

Source: American Cancer Society: Cancer Facts & Figures 2020

SYMPTOMS

Know the risks & symptoms of PANCREATIC CANCER



STOMACH PAIN



UNEXPLAINED WEIGHT LOSS



LOSS OF APPETITE, NAUSEA



CHANGES IN STOOL



MID-BACK PAIN



JAUNDICE (Yellowish Eyes or Skin)



INDIGESTION



NEW-ONSET DIABETES

EARLY DETECTION SAVES LIVES