

PUBLIC HEALTH COMMITTEE REPORT

Essential Service #3

[Give people the information they need to make healthy choices](#)



Barbara Sorgatz

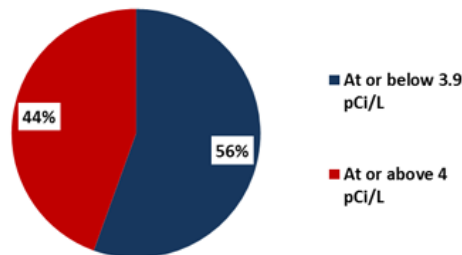
Barb Sorgatz, a member of the Kane County Healthy Places Coalition, tells her personal battle with lung cancer attributed to radon gas. See her story in Kane County Connects or in the June edition of [Health Matters](#), KCHD's monthly newsletter.

A survivor tells her story in her own words.

June 7, National Cancer Survivor's Day

Barbara Sorgatz was baffled. She had no reason to think anything was wrong with her lungs. She never smoked, her family history left no clue there could be anything wrong. She never found herself exposed to a significant amount of second-hand smoke. But there was a problem. She happened to be visiting her doctor for something unrelated to her lungs when she heard those words she would never forget: "We found a spot, a tiny, tiny spot. It's probably nothing." It was something, Stage 1B lung cancer to be exact, and a month later she was in surgery. Her cancer was blamed on radon gas, the result of the naturally-occurring geology in northern Illinois. She is able to tell her own story as a way to raise awareness over the risks of radon. "If I can save even one life, then I feel that this lung cancer has been worth getting," she said.

Almost half of the 10,000 Kane County homes & buildings tested between 2003-2011 show high levels of radon (4pCi/L or higher)

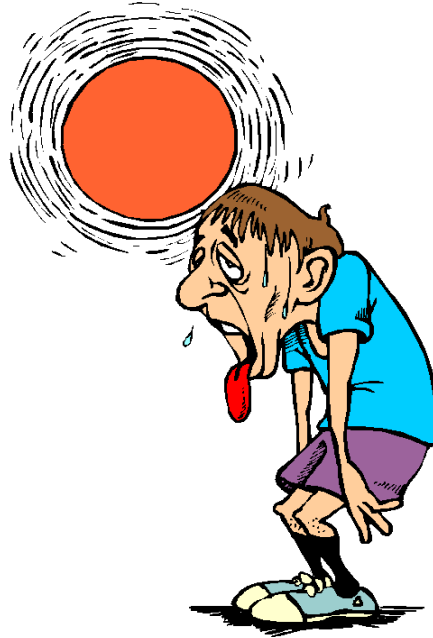


Ten essential services of Public Health

1. Monitor health status and understand health issues facing the community
2. Protect people from health problems and health hazards
3. Give people the information they need to make healthy choices
4. Engage the community to identify and solve health problems
5. Develop public health policies and plans
6. Enforce public health laws and regulations
7. Help people receive health services
8. Maintain a competent public health workforce
9. Evaluate and improve programs and interventions
10. Contribute to and apply the evidence base of public health

Essential Service #1

Monitor health status and understand health issues facing the community



Poor air quality often occurs during high heat days

Beating the heat

With summer upon us, it's time to look ahead and prepare for the type of heat we're used to in our area. According to the National Weather Service, heat is one of the leading weather-related killers in the United States, resulting in hundreds of fatalities each year. Poor air quality goes hand-in-hand with extreme heat, and KCHD monitors conditions and posts the status of air quality watches and warnings on its website.

Essential Service #2

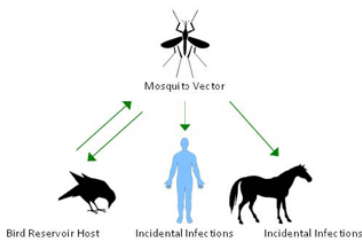
Protect people from health problems and health risks



The Health Department places mosquito traps throughout the county. The mosquitoes are then taken back to the Health Department where a test can tell whether West Nile virus is present. Here, Environmental Health Practitioner Neal Molnar tests a batch that had been recently collected.

WNV season just around the corner

West Nile virus (WNV) is most commonly transmitted to humans by mosquitoes. You can reduce your risk of being infected with WNV by using insect repellent and wearing protective clothing to prevent mosquito bites. We typically begin seeing WNV later in the summer as the weather heats up. The last two summers have been relatively mild, leading to one human case in 2014 and none in 2013. However, we saw 13 cases in 2012, tied for the second most ever.



Help prevent West Nile Virus

- ✓ Don't let standing water collect on your property!
- ✓ Check for turned up garbage can lids, grill covers, and children's toys.
- ✓ Empty, clean & refill birdbaths & wading pools frequently.

